



CHIPPENDALE®

UNMISTAKABLY BRITISH

KITCHENS



QUALITY THAT LIVES ON

Welcome to Chippendale's latest range of quality kitchens. I'm delighted to introduce the range and give you a few ideas and tips along the way to help you get the kitchen you've always wanted.

Often people are so focused on the style and design of the kitchen that they forget about the quality. The build quality of the cabinets is the very foundation of your kitchen and it is this that will ensure your kitchen can withstand the rigours of modern living.

With a name long-associated with quality craftsmanship and superior design, Chippendale Kitchens are built to last. Which is why every kitchen is guaranteed for 10 years.

And if you need a little more peace of mind, turn to page 130 where you'll find a useful guide to buying a new kitchen. This handy section will help make the process as straightforward as possible.

With so many fantastic styles, accessories and ideas across the following pages, I'm confident you'll have no problem creating the perfect kitchen for you.

George Clarke

Architect, Writer, Lecturer and TV Presenter.

PS You'll find even more useful information and a kitchen visualiser tool at chippendalekitchens.co.uk





CONTENTS

Introducing Chippendale	2
-------------------------	---

IDEAS & ADVICE

Centuries in the Making	4
Unmistakably British	5
Colour Inspiration	6
Texture Inspiration	48
Accents & Patterns Inspiration	78

THE KITCHENS

Our Modern Range	8
Our Shaker Range	50
Our Traditional Range	80

OPTIONS & ACCESSORIES

Door Collection	98
Colour Palette	102
Visualise your Chippendale Kitchen	105
Handle Options	106
Handle-Less Kitchens	108
Cabinet Specification	110
Make the Space Work for You	112
Making the Style Work	116
GRASS Nova Pro Drawer Systems	118
Storage Solutions	120
A Place for Everything	122
Lighting & Shelving	124
Sinks & Taps	126
Worktops	128
The Right Way to Buy a Kitchen	130
More Than Just a Kitchen	132
Index & FAQs	134
Proudly Made In Britain	135



CENTURIES IN THE MAKING

Graceful lines, effortless functionality, distinctly British design – these are some of the characteristics long associated with the Chippendale name. And with our range of timeless Chippendale Kitchens, the tradition continues.

These beautifully crafted kitchens bring an air of elegance to the heart of any British home, while complementing and enhancing your modern way of life.

One of Thomas Chippendale's great strengths as a designer was his ability to continually adapt and improve on existing styles, a quality we strive to adopt throughout our kitchen range. Introducing innovative storage solutions is just one way we're enhancing the style and functionality of our Chippendale Kitchens.

Creating solid, yet beautifully elegant furniture that fits seamlessly into your life and home is something that's as important to us as it was to our namesake. That's why we offer an extensive range of styles and accessories to choose from, so that whatever your tastes and lifestyle, there's a Chippendale Kitchen with your name on it.





UNMISTAKABLY BRITISH

At Chippendale we're very proud of our British heritage, not to mention our reputation for designing and manufacturing an outstanding range of durable, high-quality kitchens. All of which are made using the latest manufacturing techniques at our modern, purpose-built factory in Yorkshire.

But being British isn't just about geography. It's about having a forward-thinking attitude and a natural flair for ingenuity. Good British design has always set the trends and pushed the boundaries, which is something we strive to do with every kitchen we create.

Wherever we can, we use British components in our Chippendale Kitchens. But to help ensure we maintain the highest possible standards, we also source materials from around the world. These are then combined and assembled in the UK to produce a superior quality kitchen, backed by unrivalled customer service.





COLOUR

When planning a new kitchen, the first choice you make is often your colour scheme. Along with texture and pattern, colour can be the difference between a kitchen you like, and a kitchen you love. Colour is a subjective and emotive topic, and there are lots of guidelines you can work with to make sure your kitchen perfectly matches your own personality and taste.

White provides a beautiful neutral canvas that has proven timeless, always appearing clean and fresh. You can pair this with a more striking worktop or painted feature wall to really make it pop. If white is too stark for you, then consider a softer, more tranquil tone such as cashmere or ivory. Ivory works well with dramatic colours, such as dark blues and browns, whilst still providing a neutral backdrop on which accent colours can also be used to add interest.

Although white is ideal for pairing with primary colours, creams are more suited to the secondary colour spectrum, and can be enhanced by using different shades and textures. Sand can be used as a darker, warmer scheme and its earthy tones work well with whites, creams and bolder dark browns. Just be careful when choosing an accent, as stronger colours can clash. Although traditionally used in larger spaces, don't be afraid to use dark colours in smaller rooms as this can often create a sense of depth and space when used correctly.

Using two colours is a great way to add interest subtly or in a contrasting way – for example, pairing light doors with darker colours.



George Clarke

Architect, Writer, Lecturer and TV Presenter.



COLOUR TIPS:

- Make sure your kitchen is well lit, either naturally or artificially, to bring out the best of your chosen colour scheme.
- Use accessories or artwork to introduce a burst of colour that can be easily changed as trends, and your tastes, develop over time.
- Keep things simple. When using accent colours, less is more. A single accent can have much more of an impact than using two or three.
- Think about how different textures can provide you with contrasting or complementary colours. For example, a textured wall tile will add more depth to your scheme than a simpler plain tile.

WHITE



CREAM



SAND



BROWN





MODERN SIMPLE SOPHISTICATION

If you're looking for a kitchen that combines great British design with clean, clutter-free styling, take a look at the expertly crafted Modern range from Chippendale.

Featuring cleverly concealed storage solutions, sleek handle-less doors, and strikingly simple design features, you can create a beautifully ordered space that's perfectly in tune with modern living.

With Chippendale, minimal can also be highly individual. There's a superb range of accessories, fittings and features to let you plan and personalise your ideal kitchen.





"A modern kitchen can have just as much character as a traditional one. It's all about adding those unique, personal touches."



THE RANGE – AT A GLANCE

Solo Gloss Limestone	10
Solo Gloss Light Grey	12
Solo Gloss Cashmere	14
Solo Gloss Anthracite & White	16
Solo Gloss Colour Options	17
Solo Painted White & Green	18
Shimmer Gloss Cashmere	20
Shimmer Gloss White	22
Shimmer Gloss Ivory	24
Technica Gloss Light Grey	26
Technica Gloss Cashmere	28
Technica Gloss Ivory	30
Technica Gloss Stone	32
Technica Gloss Grey & White	33
Pure White	34
Lastra Painted Ivory & Light Blue	36
Vogue New England Oak	38
Vogue Sand Oak	39
Vogue Brown Grey Avola & Lastra Painted Ivory	40
Vogue Driftwood	42
Vogue Arlington Oak	43
Vogue Pacific Walnut	44
Vogue Lissa Oak	46
Vogue White Avola	47





SOLO GLOSS

LIMESTONE

J-pull door in a gloss lacquered
limestone finish.







SOLO GLOSS

LIGHT GREY

J-pull door in a gloss lacquered
light grey finish.





MODERN



SOLO GLOSS

CASHMERE

J-pull door in a gloss lacquered
cashmere finish.



SOLO GLOSS

J-pull door in a gloss lacquered finish.



1 Solo Gloss Anthracite & White

2 Solo Gloss White

3 Solo Gloss Grey

4 Solo Gloss Ivory





MODERN



SOLO PAINTED

WHITE & GREEN

J-pull door in a matt painted finish.

Available in a choice of 15 colours.
Find our colour palette on page 102.







SHIMMER GLOSS

CASHMERE

Slab door in a gloss cashmere finish.







MODERN



SHIMMER GLOSS

WHITE

Slab door in a gloss white finish.







MODERN



SHIMMER GLOSS

IVORY

Slab door in a gloss ivory finish.





TECHNICA GLOSS

LIGHT GREY

Slab door in a gloss light grey finish.







MODERN



TECHNICA GLOSS

CASHMERE

Slab door in a gloss
cashmere finish.







TECHNICA GLOSS

IVORY

Slab door in a gloss ivory finish.





TECHNICA GLOSS STONE

Slab door in a gloss finish.



TECHNICA GLOSS GREY & WHITE

Slab door in a gloss finish.





MODERN



PURE WHITE

Slab door in a matt white finish.





MODERN

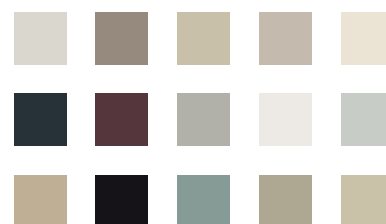


LASTRA PAINTED

IVORY & LIGHT BLUE

Slab door in a painted matt finish.

Available in a choice of 15 colours.
Find our colour palette on page 102.





VOGUE NEW ENGLAND OAK

Slab door in a woodgrain New England Oak finish.



VOGUE SAND OAK

Slab door in a woodgrain Sand Oak finish.





MODERN



**VOGUE
BROWN GREY
AVOLA
& LASTRA
PAINTED**

IVORY

Slab door in a woodgrain
Brown Grey Avola finish.



VOGUE DRIFTWOOD

Slab door in a woodgrain Driftwood finish.



VOGUE ARLINGTON OAK

Slab door in a woodgrain Arlington Oak finish.





MODERN



VOGUE PACIFIC WALNUT

Slab door in a woodgrain
Pacific Walnut finish.





VOGUE LISSA OAK

Slab door in a woodgrain Lissa Oak finish.



VOGUE WHITE AVOLA

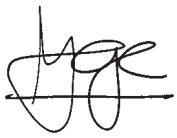
Slab door in a woodgrain White Avola finish.



TEXTURE

Texture is a truly exciting way to introduce depth and interest to any room, especially the kitchen. It's all about layering, complementing and using similar colours and tones, whilst also playing with the textures to give a timeless and elegant feeling to your design.

From multi-layered high gloss lacquered doors, and complementing silky satin painted finishes, to colder contemporary stone worktops or a warmer wooden breakfast bar, it's important to think of your kitchen design as a whole, taking into consideration flooring, splashbacks and even the appliances. Using contrasting textures can add great depth and interest to any kitchen, making even the simplest designs striking.



George Clarke

Architect, Writer, Lecturer and TV Presenter.





TEXTURE TIPS:

- Texture can be used to create different shades of the same colour – useful when creating a monochromatic scheme.
- Understand how light will interact with any proposed textures before committing them to the scheme. Make sure you test this at different times of the day with both natural and artificial light.
- Always consider how texture impacts on your chosen colour scheme.
- When using textures, remember that how they feel, as well as how they look, is very important.





SHAKER SUITED TO EVERY STYLE

The Shaker Kitchen is one of the most adaptable kitchen styles. Whether you're after a traditional look or something contemporary, there's a Chippendale Shaker to suit.

With so many colours, finishes and design accessories to choose from, there's an almost limitless range of possibilities: gloss finishes, curved worktops, innovative storage, LED lighting, island units – everything you need to create something unique.

The result is a highly personalised kitchen with no compromises. A space that fits your way of living perfectly and suits your individual tastes, down to the last detail.





"Whether you're going for a modern look or something more traditional, the Shaker style has the versatility to work."



THE RANGE – AT A GLANCE

Painted Wood Shaker Limestone & Anthracite	52
Concept Painted Ivory & Cashmere	54
Sand Oak Wood Shaker	56
Classic Painted Ivory & Cashmere	58
Hilton Painted Ivory	60
Verve Painted Light Blue	62
Shaker Gloss Stone	64
Shaker Gloss White	65
Verve Sand Oak & Verve Painted Oxford Blue	66
Moda Ivory & Cashmere	68
Moda White & Light Grey	70
Verve Lissa Oak	71
Ivory Prelude	72
Verve Ivory	74
Lissa Oak Wood Shaker	76
Verve Buttermilk	77





SHAKER

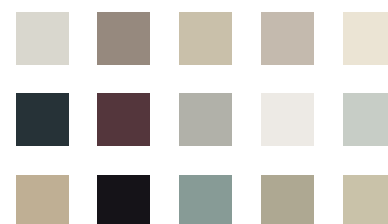


PAINTED WOOD SHAKER

LIMESTONE &
ANTHRACITE

Shaker door with a painted solid
timber frame and veneered
centre panel.

Available in a choice of 15 colours.
Find our colour palette on page 102.







CONCEPT PAINTED

IVORY &
CASHMERE

Shaker door with a recessed
handle in a painted finish.







SAND OAK WOOD SHAKER

Shaker door with a timber frame
and veneered centre panel
in a Sand Oak finish.





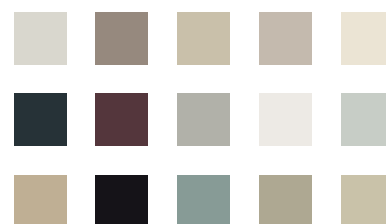


CLASSIC PAINTED

IVORY & CASHMERE

Shaker door with a smooth painted frame and centre panel.

Available in a choice of 15 colours.
Find our colour palette on page 102.







SHAKER

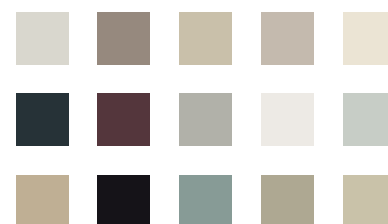


HILTON PAINTED

IVORY

Shaker door featuring chamfered edges, in a painted solid ash frame.

Available in a choice of 15 colours.
Find our colour palette on page 102.







SHAKER

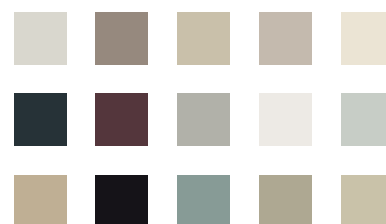


VERVE PAINTED

LIGHT BLUE

Shaker door with a painted foil wrapped frame and centre panel in a woodgrain finish.

Available in a choice of 15 colours.
Find our colour palette on page 102.





SHAKER GLOSS STONE

Shaker door with a gloss white finish.



SHAKER GLOSS WHITE

Shaker door with a gloss stone finish.





SHAKER



VERVE SAND OAK & VERVE PAINTED

OXFORD BLUE

Shaker door with a Sand Oak
woodgrain effect finish.





SHAKER



MODA IVORY & CASHMERE

Shaker door with a wrapped,
smooth painted-effect finish.





MODA WHITE & LIGHT GREY

Shaker door with a wrapped, smooth painted-effect finish.



VERVE LISSA OAK

Shaker door with a Lissa Oak woodgrain effect finish.





IVORY PRELUDE

Shaker door with a matt
ivory finish.







SHAKER



VERVE IVORY

Shaker door with an ivory
woodgrain effect finish.





LISSA OAK WOOD SHAKER

Shaker door with a solid oak frame and veneered centre panel in a Lissa Oak finish.



VERVE BUTTERMILK

Shaker door with a matt buttermilk finish.



ACCENTS & PATTERNS

Accents and patterns can be used with colour and texture to lift the character of your scheme, and are an easy way to keep your kitchen looking fresh and on-trend. You don't need more than one accent colour in a scheme as this can dilute the impact – just choose a colour you love, perhaps a burnt orange or olive green.

Accents should be used sparingly to add a burst of colour or texture to an otherwise minimalist and neutral scheme. Using one colour can have a dramatic effect, and is easily achieved by introducing coloured gadgets, artwork or floral displays. You could even feature soft furnishings in vibrant colours, such as cushions or rugs.

Adding a pattern to your scheme doesn't always mean using bright, flamboyant designs – patterns can be introduced, as with accents, in small measures. Less is more and the brighter the colour, the less you need to make an impact. A simple line, or subtle check can often add more than a louder, more detailed pattern.

George Clarke
Architect, Writer, Lecturer and TV Presenter.





ACCENT & PATTERN TIPS:

- Use accents and patterns to complement rather than dominate the colour scheme.
- Patterns don't need to be repetitive, so long as it has a link to the scheme, either through colour or texture.
- Try to introduce accent colours and patterns within items that can be easily changed to reflect new trends and your own personal tastes.





CENTURIES IN THE MAKING

The Chippendale name has long been associated with fine furniture design and great British craftsmanship. The Traditional range continues this legacy into a new era.

Offering the perfect mix of timeless style and up-to-the-minute functionality, a Chippendale Traditional Kitchen brings warmth and character into the heart of any home, while keeping pace with modern ways of living.

And with so many features, fittings and finishes available, you don't have to stay traditional with your choices. You can create something with a character all of its own.





“Traditional kitchens have come a long way. There are now more ways than ever to create something timeless yet unique.”



THE RANGE – AT A GLANCE

Stately Shaker Painted Ivory & Oxford Blue	82
Georgian Painted Ivory & Hickory	84
Georgian Platinum White	86
Georgian Buttermilk	87
Grooved Ivory	88
Heritage Painted Cashmere	90
Country Lissa Oak & Painted Hickory	92
In-Frame Ivory	94
Regent Buttermilk	95





TRADITIONAL



STATELY SHAKER PAINTED

IVORY &
OXFORD BLUE

Shaker style door featuring an inner beading with a painted solid timber frame and veneered centre panel.

Available in a choice of 15 colours.
Find our colour palette on page 102.







TRADITIONAL

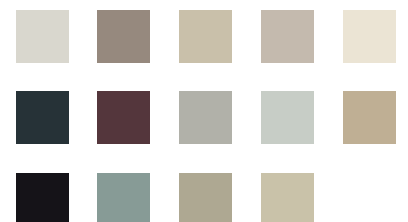


GEORGIAN PAINTED

IVORY & HICKORY

In-frame effect door in a
smooth painted finish.

Available in a choice of 14 colours.
Find our colour palette on page 102.





GEORGIAN PLATINUM WHITE

In-frame effect door in a smooth painted platinum white finish.



GEORGIAN BUTTERMILK

In-frame effect door in a smooth painted buttermilk finish.





TRADITIONAL



GROOVED IVORY

Square framed door with a
grooved ivory centre panel.







TRADITIONAL

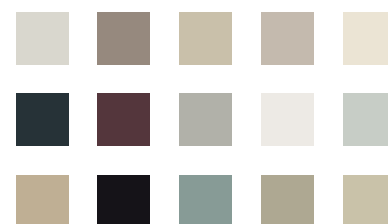


HERITAGE PAINTED

CASHMERE

Solid timber painted square framed
door with a raised centre panel.

Available in a choice of 15 colours.
Find our colour palette on page 102.







TRADITIONAL

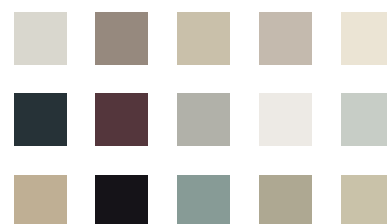


COUNTRY LISSA OAK & PAINTED

HICKORY

In-frame door featuring a solid oak frame and oak veneered centre panel, finished in Lissa Oak.

Available in a choice of 15 colours.
Find our colour palette on page 102.





IN-FRAME IVORY

In-frame door featuring a foil wrapped ivory woodgrain finish.
Available in a choice of 15 colours. Find our colour palette on page 102.





REGENT BUTTERMILK

Square framed door with a raised centre panel in a buttermilk finish.



OPTIONS & ACCESSORIES MAKE IT UNIQUE

Whichever Chippendale Kitchen you eventually decide on, you'll also get a whole range of additional design options to choose from to help personalise the look and turn it into something that expresses your individuality.

Thomas Chippendale, our namesake, believed that function is as important as form. It's a philosophy we share. That's why we also provide a huge choice of practical accessories and ingenious storage solutions to make sure your kitchen complements the way you live.





"This is your opportunity to transform your choice into something that reflects your personality and your individual tastes."



OPTIONS & ACCESSORIES – AT A GLANCE

Door Collection	98
Colour Palette	102
Visualise your Chippendale Kitchen	105
Handle Options	106
Handle-Less Kitchens	108
Cabinet Specification	110
Creative Space	112
Utility Rooms	116
GRASS Nova Pro Drawer Systems	118
Storage Solutions	120
A Place for Everything	122
Lighting & Shelving	124
Sinks & Taps	126
Worktops	128
The Right Way to Buy a Kitchen	130
More Than Just a Kitchen	132
Index and FAQs	134
Proudly Made In Britain	135





DOOR COLLECTION

The door style can define the whole look and feel of your new kitchen. That's why we've created a door range to suit every kind of home and every kind of taste.



TRADITIONAL DOORS



Regent Buttermilk
(Find on page 95)



Grooved Ivory
(Find on page 88)



Georgian Buttermilk
(Find on page 87)



Georgian Platinum
White
(Find on page 86)



Georgian Painted
- available in 14 colours
(Find on page 84)



In-Frame Ivory
(Find on page 94)



In-Frame Painted
- available in 15 colours
(Find on page 94)



Heritage Painted
- available in 15 colours
(Find on page 90)



Stately Shaker
- available in 15 colours
(Find on page 82)



Country Lissa Oak
(Find on page 92)



Country Painted
Ivory



Country Painted
- available in 15 colours
(Find on page 92)



SHAKER DOORS



Verve Ivory
(Find on page 74)



Verve Lissa Oak
(Find on page 71)



Verve Sand Oak
(Find on page 66)



Moda Ivory
(Find on page 68)



Moda Cashmere
(Find on page 68)



Moda White
(Find on page 70)



Moda Light Grey
(Find on page 70)



Verve Buttermilk
(Find on page 77)



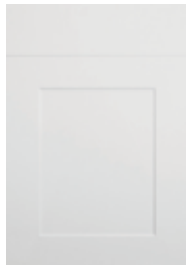
Ivory Prelude
(Find on page 72)



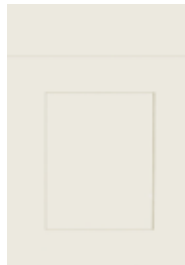
Verve Painted
- available in 15 colours
(Find on page 62)



Shaker Gloss Stone
(Find on page 64)



Shaker Gloss White
(Find on page 65)



Classic Painted
- available in 15 colours
(Find on page 58)



Concept Painted
(Find on page 54)



Lissa Oak
Wood Shaker
(Find on page 76)



Sand Oak Wood
Shaker
(Find on page 56)



Hilton Painted Ivory
(Find on page 60)



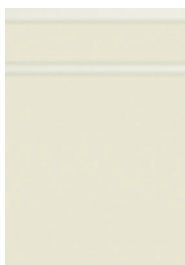
Hilton Painted
- available in 15 colours
(Find on page 60)



Painted Wood
Shaker
- available in 15 colours
(Find on page 52)

MODERN DOORS

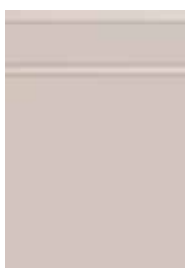
				
Shimmer Gloss White <i>(Find on page 22)</i>	Shimmer Gloss Ivory <i>(Find on page 24)</i>	Shimmer Gloss Cashmere <i>(Find on page 20)</i>	Vogue Lissa Oak <i>(Find on page 46)</i>	Vogue Driftwood <i>(Find on page 42)</i>
				
Vogue White Avola <i>(Find on page 47)</i>	Vogue Brown Grey Avola <i>(Find on page 40)</i>	Vogue Arlington Oak <i>(Find on page 43)</i>	Vogue Pacific Walnut <i>(Find on page 44)</i>	Vogue Sand Oak <i>(Find on page 39)</i>
				
Vogue New England Oak <i>(Find on page 38)</i>	Pure White <i>(Find on page 34)</i>	Technica Gloss Stone <i>(Find on page 32)</i>	Technica Gloss Ivory <i>(Find on page 30)</i>	Technica Gloss White <i>(Find on page 33)</i>
				
Technica Gloss Grey <i>(Find on page 33)</i>	Technica Gloss Cashmere <i>(Find on page 28)</i>	Technica Gloss Light Grey <i>(Find on page 26)</i>	Lastra Painted - available in 15 colours <i>(Find on page 36)</i>	Solo Gloss White <i>(Find on page 15)</i>



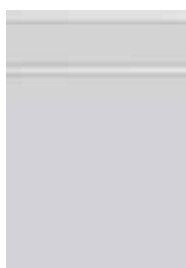
Solo Gloss Ivory
(Find on page 16)



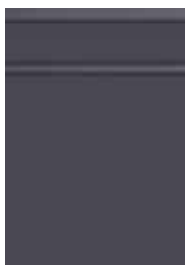
Solo Gloss Grey
(Find on page 16)



Solo Gloss Cashmere
(Find on page 14)



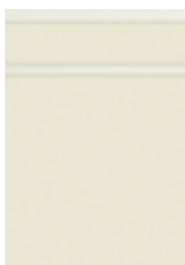
Solo Gloss Light Grey
(Find on page 12)



Solo Gloss Anthracite
(Find on page 16)



Solo Gloss Limestone
(Find on page 10)



Solo Painted
- available in 15 colours
(Find on page 16)

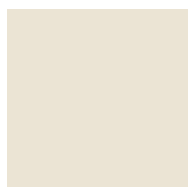




COLOUR PALETTE

To let you express your own unique style, a selection of Chippendale Kitchens is available in a range of 15 stunning, on-trend colours.

Lastra, Verve, Classic, Solo, Georgian, In-Frame, Hilton, Painted Wood Shaker, Heritage, Stately Shaker, Country and Concept Painted kitchens can all be supplied in these elegant shades, designed to work well on their own or combined with other colours and textures.



Ivory



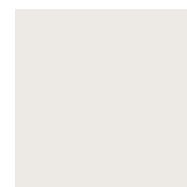
Light Blue



Green



Cashmere



White



Sage Grey



Oyster



Light Grey



Steel Blue



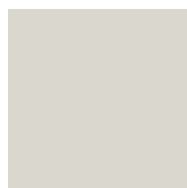
Hickory



Aubergine



Anthracite



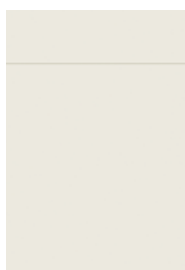
Limestone



Oxford Blue



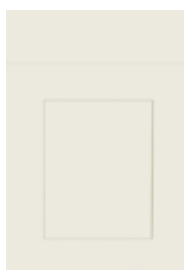
Sandstone



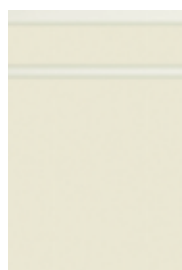
Lastra



Verve



Classic



Solo



Georgian



In-Frame



Hilton



Painted Wood Shaker



Heritage



Stately Shaker



Country



Concept Painted



RECOMMENDED CABINET COLOURS

Chippendale painted kitchens can be supplied in all 11 cabinet colours.

If your design includes curved corner base and wall units, please ensure you only specify Lissa Oak, Platinum White or Matt Ivory.

Open units are also available in a choice of 15 painted colours.

The colours shown in this brochure are as accurate as the printing process allows and therefore we strongly recommend that you contact your Chippendale retailer to view a display or door sample before placing your order.

MAKE IT YOURS

Customise your kitchen with our huge range of colour options and door styles.



MODA WHITE



SHAKER WOOD IVORY



HERITAGE PAINTED OYSTER



STATELY SHAKER PAINTED SANDSTONE



LASTRA PAINTED
LIGHT GREY



SOLO PAINTED
AUBERGINE



GEORGIAN PAINTED STEEL BLUE



VISUALISE YOUR CHIPPENDALE KITCHEN

You can now create your perfect kitchen using the Chippendale kitchen visualiser tool. Available online at chipvisualiser.co.uk, or as an iPad app, our handy tool allows you to select from a range of painted door styles, worktops, flooring and wall colours. It's the perfect way to plan your new kitchen.

To download the app, please visit the Apple App Store and search for **Chippendale configurator**.

Once you've finished, simply save your creation, email to yourself or a friend, or share on Facebook, Pinterest or Twitter.

Why not plan your new kitchen today and visit your local Chippendale retailer to discuss your requirements?





HANDLE OPTIONS

We offer an extensive range of distinctive handle styles to let you personalise your Chippendale Kitchen and make it your own.

Please note, not all handle suites are suitable for each kitchen. Most are supplied at no extra charge. However, a small number do carry a surcharge and your Chippendale retailer will be happy to advise you on suitability and costs. A handle suite may comprise up to three handles which are fitted to drawers, doors and spice boxes where applicable.



MODERN HANDLES



Suite 604 †



Suite 609



Suite 611 †



Suite 617 †



Suite 619



Suite 620



Suite 623



Suite 625



Suite 632 †



Suite 634 †



Suite 638 †



Suite 640



Suite 665 †



Suite 669



Suite 673



Suite 674 †



Suite 678 †



Suite 683



Suite 684



Suite 686



Suite 687



Suite 689



Suite 653



Suite 711



Suite 713



Suite 715



Suite 717



Suite 719



Suite 721



Suite 733



Suite 737



Suite 738



Suite 739



TRADITIONAL HANDLES



Suite 600



Suite 602



Suite 603



Suite 607



Suite 629



Suite 630



Suite 631



Suite 648



Suite 651



Suite 652



Suite 655



Suite 657 †



Suite 660 †



Suite 663



Suite 664



Suite 667



Suite 668



Suite 677



Suite 682



Suite 685



Suite 692



Suite 693



Suite 694



Suite 723



Suite 725



Suite 727



Suite 729



Suite 731



Suite 735

† Handles can be fitted either vertical or horizontal.



HANDLE-LESS KITCHENS

If you're looking for a minimalist kitchen, perhaps a kitchen that doesn't feature handles as these can detract from clean lines and a sleek design, then Chippendale has two ways to achieve this – Contact and Solo.

CHIPPENDALE CONTACT KITCHENS

The principle of Contact is that wherever possible, doors and flaps are opened simply by touch which will activate the opening mechanism. (Please note that certain appliance doors, pull-out units, magic corner units, etc. are not available with this touch open system.)

In the same way, Contact drawers and pan drawers are opened by simply pressing on the drawer to activate the spring-open runners. (Please note that certain drawers used on pull-out units are not available with spring-open drawer runners. Internal drawers are not available with spring-open runners.)

Chippendale Contact is available on all Shimmer, Vogue, Lastra and Technica doors and is also available in Pure White.





CHIPPENDALE SOLO KITCHENS

Solo kitchens are the alternative way to design a Chippendale Kitchen without a handle. This style features an integrated J-Pull style handle grip (called J-Pull due to its shape).

The integrated grip of Solo has been specifically developed to be deeper than other versions, providing more grip and ensuring that opening dishwasher and larder doors is easier.

Solo kitchens are available in six gloss finishes (White, Ivory, Grey, Light Grey, Cashmere and Anthracite) as well as 15 matt painted colours.





CABINET SPECIFICATION

Our cabinets are made from 18mm thick chipboard panels incorporating solid backs. You can choose from 11 colour co-ordinating finishes that feature on both interior and exterior surfaces. A full range of matching plinths, panels and pilasters are also available that will add to the overall co-ordinated look.



Platinum White



Gloss Ivory



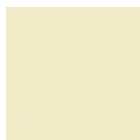
Buttermilk



Gloss White



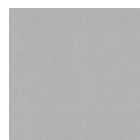
Lissa Oak



Gloss Stone



Matt Ivory



Aluminium



Sand Oak



Cashmere
Matt



Cashmere
Gloss

GRASS TIOMOS SOFT CLOSE HINGE

Chippendale units are supplied with GRASS Tiomos hinges with an integrated soft close action. These hinges require less opening force and the dampening action is not affected by changes in temperature.







MAKE THE SPACE WORK FOR YOU

By adding some of the many innovative design features and storage options we offer, you can enhance the style and functionality of your Chippendale Kitchen and create a personalised space that's perfect for your needs.



LARDER UNITS WITH OAK DRAWERS

To complement your Chippendale Kitchen, we have a great range of larder and pantry unit options, complete with beautifully crafted oak drawers. They're available in a variety of heights and styles.



MAKING THE MOST OF YOUR CORNER

As an alternative to a normal corner base and wall unit combination, you can choose from a range of corner larder units. These maximise the available storage space in what can be a tricky area of the kitchen. They can either be supplied with shelves, or with four Kessebohmer LeMans storage systems.



OPEN SHELVING

As an alternative to placing the sink under a window, or using a bridging unit, why not consider using open shelving? The solution shown here uses planked buttermilk panelling and shelving to create a traditional, country kitchen look.



SEATING AREA

If you want to add a little more versatility to your kitchen, a casual seating area can be a great idea. What's more, it can also provide some very useful additional storage space.



ILLUMINATED SHELVING

Both stylish and practical, illuminated shelving can be one of those finishing touches that really sets off your kitchen design. It's available as either a straight shelf in 600mm and 900mm widths, or as a corner shelf.





ISLAND UNIT

An island unit adds extra surface space and character to your kitchen. You'll find a wide range of units available in the Chippendale collection, some incorporating traditional features such as decorative pilasters and other more modern designs utilising different heights.



CHUNKY PILASTER

Adding decorative features like pilasters can work beautifully with a Chippendale Kitchen, particularly with the more traditional styles. There are a variety of designs to choose from, allowing you complete control over the look, feel and personality of your kitchen.



TRAY UNIT

Our optional tray unit is a handy and attractive accessory that houses two removable oak trays. It's available for all our Country framed kitchens.



CLEVER USE OF A SMALL SPACE

Even in smaller kitchens, where space is at a premium, a breakfast bar could still be incorporated into the design. It not only provides useful, additional worktop space, but also a casual area to enjoy the most important meal of the day.



PLATE & WINE STORAGE

We have a selection of plate and wine racks available to perfectly complement our range of painted kitchens. Available in 500mm and 800mm widths, these units have the capacity to store 10-32 plates and 8-28 bottles of wine.



WICKER BASKETS

More suited to traditional kitchen designs, these wicker basket base units are ideal if you're looking for larder-style storage.



CURVED CORNER UNIT

A stylish alternative to the more standard L-shape corner base unit, the curved version, with its sweeping lines, can suit both modern or traditional-style kitchens. They partner perfectly with our range of curved laminate worktops and are available in a selection of kitchens:

Lastra, Hilton, Solo, Classic, Heritage, Wood Shaker Painted, Shaker Lissa Oak Wood, Technica, Pure White.

*Please note the curved unit used for Solo ranges is supplied with two doors.



MAKING THE STYLE WORK

If you're going to treat yourself to a Chippendale Kitchen, why not have the utility room to match? We can co-ordinate it with your new kitchen design, or if you'd rather create a room with an entirely different feel, we can do that too.

With integrated appliances tucked neatly behind cabinet doors, your Chippendale utility room can be a clean, well-ordered space. And if you want to add interest to the design, open shelving is a great way to achieve this.

Large items such as ironing boards, vacuum cleaners and mops will fit perfectly inside our tall larder units while our corner larder units will help you maximise every inch of your available space.

However you choose to use your utility room space, you can be certain it will be constructed with the same high standards and design expertise we apply to our kitchens.







GRASS® NOVA PRO THE COMPLETE DRAWER SYSTEM WITH PRECISION AND INDIVIDUALITY

A quality kitchen needs to have quality built in and Chippendale Kitchens include Nova Pro drawers from GRASS – one of the world's leading suppliers of quality drawer boxes.

A choice of drawer systems are available – Nova Pro (supplied as standard) or luxury oak drawers (available as an upgrade) – designed to provide functional storage solutions, combined with a smooth, soft-closing action.



Easy to clean



Easy to remove

GRASS NOVA PRO ALUMINIUM DRAWER FEATURES

- GRASS drawers feature fully synchronised drawer runners to provide an ultra-smooth action whilst at the same time requiring a very low opening force.
- Drawers feature a smooth and silent soft close action with progressing dampening.
- Full extension drawer runners to provide a load bearing capacity of 40kg per drawer (more than conventional systems).
- Twin-wall, metal sided drawer box with straight internal sides to provide more storage space and better compatibility with accessories.
- Solid 16mm base to provide extra rigidity and reliability.
- Easy cleaning and maintenance with tool-free removal of the drawer and drawer front. No tools, no hassle.



LUXURY OAK DRAWER BOXES

For that added luxury, you can also choose solid oak drawer boxes and pan drawers, constructed using traditional dovetail joints. These drawers use GRASS soft close runners, ensuring a smooth and silent close, and are an ideal accompaniment to any Chippendale Kitchen, and are especially suited to painted ranges.



GRASS Nova Pro aluminium (with curved side profile).
Supplied as standard.



Luxury oak drawer (with dovetail joints).
Available as an upgrade option.



EVERYTHING IN
ITS PERFECT PLACE.

EVERYTHING
WITHIN REACH.

EASY TO USE
AND ENJOY.

Chippendale storage solutions provide stylish, practical and functional solutions, meaning better organised and easier access to storage space.

In addition to brilliant functionality, Chippendale storage solutions include exclusive design and a high quality finish. Internal cabinet space is used more efficiently than conventional systems, helping you get the most out of your Chippendale Kitchen.



2



1

Experience the design every time you reach for a pot or pan with the LeMans Corner Storage system, awarded the Red Dot Design for outstanding design achievements.



reddot design award



3



FEATURES AND BENEFITS:

- 'Softstop' soft open and close action supplied on all pull-out storage.
- Wire shelves or solid base shelves available.
- Greater load bearing capacity than conventional systems.
- Square edges on larder pull-outs provide greater area of usable space.
- Ideal for storing large amounts of dry food items or large pans and cookware.

1. LeMans Corner Storage
2. Convoy Premio Pull-Out Larder Storage
3. Tandem Solo Pull-Out Larder Storage
4. Pull-Out Larder Storage with wire or solid bottom bases
5. Tandem Pull-Out Larder Storage
6. Carousel Storage
7. Breakfront Pull-Out Storage

Please consult with your retailer for the full range of storage options available.



A PLACE FOR EVERYTHING

Chippendale Kitchens are as practical as they are beautiful and a range of functional accessories are available, especially designed to allow you to customise your kitchen to your exact needs.



CUTLERY TRAYS

A wide range of cutlery trays and utensil dividers are available in either a silver effect or luxurious solid oak. Combinations of trays and dividers are used depending on the width of the drawer and your Chippendale retailer will be able to advise you on the possible combinations.



PAN DRAWER ACCESSORIES

Plates and crockery can be held securely in place with either oak or beech inserts. Removable storage boxes in oak or beech can also be an effective way of storing kitchen sundries.



LINERO MOSAIQ MIDWAY SYSTEM

This stylish and functional midway rail system is supplied in one handy pack and features two 600mm rails, shelf, pot (with quiver), two utensil hooks and kitchen roll holder ensuring useful items are always to hand.



RECYCLING WASTE BINS

To assist you with being environmentally friendly, we have a selection of recycling bins available, allowing you to easily and safely separate and dispose of unwanted kitchen waste.



Swing-out combi waste bin



Swing-out rectangular waste bin



Pull-out combi waste bin



Swing-out cylinder waste bin



Pull-out removable bins

PRACTICAL SOLUTIONS

Storage should be both stylish and practical. Traditional wicker baskets not only look good, they are a great place to keep fruit and vegetables. Look inside our units and you'll find we really have thought of everything.

Here are a few hidden secrets, but visit your Chippendale retailer to see more clever ideas that will make your kitchen function beautifully.



Wicker storage baskets



Base unit with drip tray protector



Pop-up socket with 2 USB charge points

LIGHTING & SHELVING

Modern lighting is an important feature within the design of your kitchen. Our extensive range offers a wide variety including the very latest styles and lighting options.



Glass shelf and bracket
Code: SHELFBR



Square shelf bracket
Code: SHELFBRSQ



Diffused corner shelf
Code: LTSHELFCRN



2 LED strip lights for edge lit shelves
Code: LTSHLED2



Flexible LED strip lighting
Code: LTFLEXLED/2



Diffused floating shelf
Code: LTSHELF 60 & 90



Reflective glazed unit (day)



Reflective glazed unit (night)



Sirius 2 light LED under unit light
Code: LTSIRIUS2



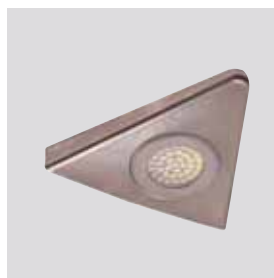
Light strip for drawer
Code: LTUNT 600 & 900



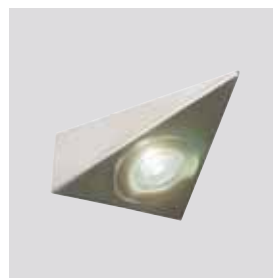
Polaris surface/recessed round LED light
Code: LTRNDPOL2



Halo light
Code: LTHAL 2 & 3



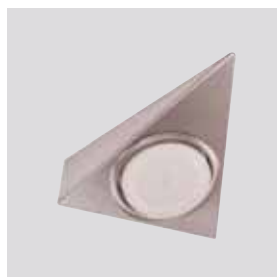
Halo triangular light
Code: LTHALTRI 2 & 3



Polaris Tri-light
Code: LTTRIPOL2



Plinth light
Code: LTMONZA4



Diffused 60 point LED Tri-light
Code: LTTRI60



Diffused 60 point round LED light
Code: LTRND60



Sirius diffused LED Tri-light
Code: LTSIRTRI 2 & 3



Grace high output LED over/under cupboard light
Code: LTGRACE 2 & 3



Sirius 35mm square plinth/cabinet light
Code: LTPL35SQ 1 & 3



Sirius 32mm round plinth/cabinet light
Code: LTPLRND4



Arrezzo high output LED surface/under cupboard light
Code: LTAREZ 2 & 3



Infra-red sensor
Code: LTCABSW



Touch switch
Code: LTSENSE



100mm square flat panel LED light
Code: LTSQ100



LED diffused strip light
Code: LTLED 222 & 343



The 4-zone remote control system allows the user to control four different lighting circuits from one remote control without the need to physically wire them together. It allows you to switch up to four different areas on, off or dim at the same time, or individually.

The innovative WiFi module allows wireless control of multiple LED lights in the palm of your hand. The hub is compatible with any 12Vdc LED lights so you can control your cabinet lights, plinth lights or strip lighting using your iOS 5.0 or later smart phone or tablet, by downloading the app, which is free via the Apple Store or Android Google Play.

Inside wall units or flap units with no ventilation, under-cupboard lights should be used instead of low voltage downlights.



SINKS & TAPS

The Chippendale range of sinks and taps has been developed to provide a comprehensive and stylish offer.

Our range of stainless steel sinks are made from 18/10 grade stainless steel - the highest grade available - ensuring your sink is highly resistant to staining, rusting and corrosion.

Along with our range of high quality stainless steel sinks and taps, we also supply Schock CRISTALITE granite sinks and these are available with matching taps.

Schock CRISTALITE sinks are easy to clean, safe for use with food and are finished with Schock Antibac. This special hygiene protection uses natural silver ions to reduce bacterial growth by up to 95% and makes working in the kitchen cleaner and safer.



SCHOCK TRITON
Moonstone
(1.0 bar pressure)



SCHOCK TRITON
Black
(1.0 bar pressure)



SCHOCK TRITON
White
(1.0 bar pressure)



SCHOCK TRITON
Matt Black
(1.0 bar pressure)



SCHOCK TRITON
Grey
(1.0 bar pressure)



SCHOCK NEPTUNE 1.0 Bowl
(Black reversible)



SCHOCK NEPTUNE 1.5 Bowl
(Black reversible)



SCHOCK NEPTUNE 1.0 Bowl
(Moonstone reversible)



SCHOCK NEPTUNE 1.5 Bowl
(Moonstone reversible)



SCHOCK NEPTUNE 1.0 Bowl
(White reversible)



SCHOCK NEPTUNE 1.5 Bowl
(White reversible)



SCHOCK NEPTUNE 1.0 Bowl
(Matt Black reversible)



SCHOCK NEPTUNE 1.5 Bowl
(Matt Black reversible)



SCHOCK NEPTUNE 1.0 Bowl
(Grey reversible)



SCHOCK NEPTUNE 1.5 Bowl
(Grey reversible)



LIBRA 1.0 Bowl Small



LIBRA 1.5 Bowl



LIBRA 1.0 Bowl Large



MERCURY 1.0 Bowl



MERCURY Drainer



SATURN 1.0 Bowl
Undermount



SATURN 1.5 Bowl
Undermount



JUPITER 1.0 Bowl



JUPITER 1.5 Bowl



PLUTO 1.0 Bowl
(reversible)



PLUTO 1.5 Bowl
(reversible)



EUROPA 1.0 Bowl Compact



EUROPA 1.0 Inset Bowl



EUROPA 1.5 Inset Bowl



TITAN 1.0 Inset Bowl



TITAN 1.0 Inset Bowl Compact



TITAN 1.5 Inset Bowl



BELFAST 1.0 Bowl Sink (White)



SUDBURY 2.0 Bowl Sink (White)



PORTLAND 1.0 Bowl



PORTLAND 1.5 Bowl



CHARON Chrome



LEDA Chrome



ELARA Chrome



OBERON Chrome



VESTA Chrome



COX (0.5 Bar Pressure) Chrome



DAX FLAT (0.5 Bar Pressure) Chrome



DAX SQUARE (0.5 Bar Pressure) Chrome



AUKLAND (0.3 Bar Pressure) Chrome



LIBERTY (0.1 Bar Pressure) Chrome



SWAN* (0.3 Bar Pressure) Chrome



COX CRUCIFORM** (0.3 Bar Pressure) Chrome



VERONA* (0.3 Bar Pressure) Chrome & Brushed Steel



COX SIDE LEVER** (0.5 Bar Pressure) Chrome



SWAN BRIDGE † (0.3 Bar Pressure, to fit worktop must be recessed on underside) Chrome



FLEXIO † (0.5 Bar Pressure) Chrome



FLEXI SEMI-PROFESSIONAL † (0.8 Bar Pressure) Chrome



CRETA PULL-OUT (0.8 Bar Pressure) Chrome



CRETA (0.5 Bar Pressure) Chrome



CRETA LONG (0.5 Bar Pressure) Chrome



COX FOUNTAIN TOWER † (0.5 Bar Pressure) Chrome



OVO (0.5 Bar Pressure) Chrome



STERLING (0.3 Bar Pressure) Chrome



ARENA PULL DOWN (0.8 Bar Pressure) Chrome



LINEAR TWIN LEVER (0.8 Bar Pressure) Chrome



U NECK SINGLE LEVER (0.8 Bar Pressure) Chrome

† Ideal for mounting on a solid surface such as wood or granite.

* No diffuser supplied.

** Requires a minimum 5 metre head or pressured system.



DUROPAL QUADRA WORKTOPS

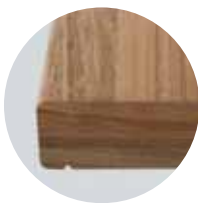
So, you've chosen your Chippendale Kitchen, now you need to select the right worktop to finish your design. To help you, we've chosen a comprehensive range of colours to complement the Chippendale range from the Duropal Quadra Worktop collection.

Duropal are a leading supplier of quality laminate worktops throughout Europe, and the Quadra range of worktops is an ideal alternative to solid surface, granite or timber worktops. The Quadra profile is designed to provide the appearance of solid surface worktops and the unique 'seal groove' ensures a lifetime of protection against moisture and steam.



These high quality, fashionable and durable worktops are resistant to: sunlight, scratching, abrasion, stains (such as coffee, tea, red wine, ink), fruit juice spills, steam and cigarette burns, and have achieved the FIRA Gold Award for product excellence.

To view displays of Duropal worktops, please visit your local Chippendale retailer.



Unique 'seal groove'



CURVED WORKTOPS

A range of Duropal worktops have been designed specifically to suit our curved base end and curved corner units perfectly. These worktops have a totally flat-faced profile and are a practical and cost-effective solution to solid surfaces and granite worktops. Curved worktops are available in both 40mm and 22mm thicknesses in all the colours.



GABLE ENDS

Available in all colours, in 40mm and 22mm thicknesses (where available), gable ends are an ideal way to create a peninsular island unit effect, or can be used as a stylish way to end a run of base units.

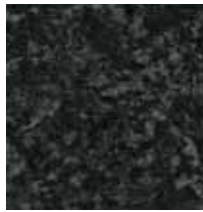


LAMINATED BACKBOARDS & UPSTANDS

Available in all colours, splashbacks and upstands are an ideal alternative to tiling, protecting walls from splashes behind hobs and sinks.



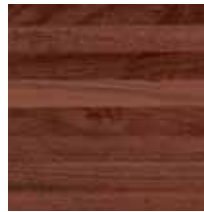
WORKTOP COLOURS



Black Brazil



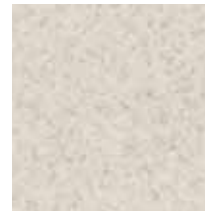
Cosmic Granite



Woodmix Block



Slate



Glacial Storm



Taurus Sand



White



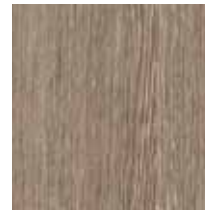
Oak Block



Harvard Oak



Astral Quartz



Clay Sangha Wenge



Jura Marble



Block Walnut



Antique Messina



Natural Wenge



Dark Mountain Oak



Tivoli



Platon



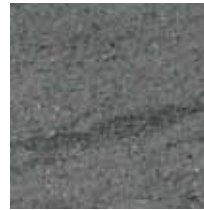
Chapel Oak



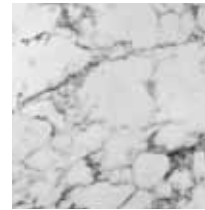
Grey Ottawa



Ipanema White



Ipanema Grey



Marmor Bianco



Travertine Stone



Ponderosa Pine



Rabac



Sonoma Oak

All colours available in 40mm Quadra profile.

All colours available in 40mm & 22mm Curved/Straight-edged profile.

Please note: High gloss laminates, whilst equally hardwearing may show scratches.

To order a FREE sample colour swatch, delivered direct to your home, please call 01625 660411.



THE RIGHT WAY TO BUY A KITCHEN

The modern-day British kitchen is by far the busiest and most regularly used room in the home. With so many functions performed in it every day, proper planning and great design is essential.

The kind of space you have available, and how your family move around it will play a huge part in the overall design of your kitchen.

You want it to look beautiful, but also work beautifully, to complement your way of living. So take your time to browse the full range of Chippendale Kitchens in this brochure, then follow these five simple steps to help you make the right choices.



STEP 1 IT'S ALL IN THE PLANNING

Getting a kitchen that's perfect for you and your family's needs takes time and plenty of planning, so don't try to rush this stage. Before you talk to any experts, give yourself time to sit down and think about how you would like to use the space.

Ask yourself: what would be my ideal layout? Who's going to use it? How much storage do I need? What appliances do I want? What colours and textures do I like? Do I want an island unit and can the space take it? Measure the dimensions, including where the doors, windows and services are located and make a list of exactly what you want and need.



STEP 2 ADD SOME EXPERTISE

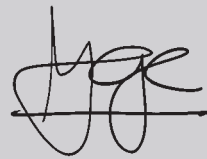
Once you have your measurements and a rough outline of what you want, it's time to visit your local Chippendale retailer to chat through your ideas with a designer.

They'll have the experience and design expertise to advise you on what will work and what won't, and will be able to turn your initial thoughts into something that not only reflects your personality, but supports and enhances your individual lifestyle.

"You know better than anyone how you and your family will use your kitchen space. So try to put together a rough plan before you talk to your kitchen designer."

George Clarke

Architect, Writer, Lecturer and TV Presenter.



STEP 3

DECIDE ON THE DOORS

Nothing defines a kitchen more than the doors. Depending on the design, you can create something elegant, rustic, eye-catching, minimalist or luxurious. A Chippendale Kitchen has dozens of Traditional, Shaker and Modern styles available, in a range of gloss, wood effect, timber and painted finishes. All of which can be customised with an extensive range of handles. Or you can choose to go handle-less if you want a truly modern look.



STEP 4

LET'S TALK STORAGE

You should have already thought carefully about your storage. Not just what you need now, but also in the future. By using your available space efficiently, it's surprising just how much extra storage you can create. Chippendale units are available with all kinds of ingenious storage solutions such as the designer 'LeMans' corner unit, pull-out larders and internal drawers. You'll find the full range of functional accessories, including lighting and shelving, from page 106.



STEP 5

WORK OUT YOUR WORKTOPS

Choosing a worktop is an important part of the design process and can change the whole look and feel of your kitchen. So it has to be right. That's why Chippendale offer a huge range of durable laminate worktops from Duropal, one of the UK's leading suppliers. They're available in a wide choice of colours and styles, and in 40mm and 22mm thicknesses. There's also a unique range of curved worktops, designed specifically to suit the collection of curved base units.



MORE THAN JUST A KITCHEN

THE CHIPPENDALE 10-YEAR GUARANTEE

All Chippendale Kitchens come with a 10-year guarantee to give you complete peace of mind when purchasing. It guarantees that for a period of 10 years from the date of purchase, your kitchen cabinets and fascias manufactured by Omega PLC are free from defects in material and workmanship.

Please ask your Chippendale retailer for more details.

THE CHIPPENDALE DEPOSIT GUARANTEE SCHEME

Chippendale Kitchens' Deposit Guarantee Scheme offers you peace of mind and certainty when you purchase a Chippendale Kitchen from any of our approved Chippendale Kitchens retailers.

Should the retailer cease to trade before we've delivered your kitchen, we guarantee to supply your Chippendale Kitchen furniture at the current manufacturer's recommended retail price, less the deposit paid, provided that the amount paid to the retailer does not exceed 50% of the manufacturer's recommended retail price.

ONLINE INSPIRATION

If you're looking for even more inspiration, look no further than the Chippendale website. Here you'll discover a great range of features to help you find and plan out the perfect kitchen for you.

As well as being able to browse the catalogue and an image gallery of every individual kitchen and accessory, our blog and inspiration pages are full of helpful, expert advice to help you make decisions that will work for your space.

You'll find an easy-to-use kitchen visualiser too, which allows you to try different combinations of painted kitchens along with a selection of handles, worktops, flooring and wall colours.

DESIGNED FOR YOU AND YOUR WORLD

Here at Chippendale, it's not just the kitchen environment we care about. We're also committed to making our planet a cleaner, more beautiful place too. So naturally, sustainability is something that's very important to us. From the wood we use and the energy we consume, to our transport and logistics, we take great care to ensure we're being environmentally responsible at all times.

We also like to make products that last. We believe that this is just as important for protecting the world's limited resources. To that end, Chippendale Kitchens have been awarded FSC® Chain of Custody Certification, giving you the peace of mind that the materials used to make your kitchen have been sourced from responsibly managed forests.



We hope you enjoy this Chippendale brochure. When you've finished with it please pass it on to a friend or recycle it. Thank you.



CLASSIC	
Classic Painted Ivory & Cashmere	58
CONCEPT PAINTED	
Concept Painted Ivory & Cashmere	54
COUNTRY	
Country Lissa Oak & Painted Hickory	92
GEORGIAN	
Georgian Buttermilk	87
Georgian Painted Ivory & Hickory	84
Georgian Platinum White	86
GROOVED IVORY	88
HERITAGE	
Heritage Painted Cashmere	90
HILTON	
Hilton Painted Ivory	60
IN-FRAME	
In-frame Ivory	94
IVORY PRELUDE	72
LAISTRA	
Lastra Painted Ivory & Light Blue	36
LISSA OAK WOOD SHAKER	76
MODA	
Moda Ivory & Cashmere	68
Moda White & Light Grey	70
PAINTED WOOD SHAKER	
Painted Wood Shaker Limestone & Anthracite	52
PURE WHITE	34
REGENT BUTTERMILK	95
SAND OAK WOOD SHAKER	56
SHAKER GLOSS	
Shaker Gloss Stone	64
Shaker Gloss White	65
SHIMMER GLOSS	
Shimmer Gloss Cashmere	20
Shimmer Gloss Ivory	24
Shimmer Gloss White	22
SOLO	
Solo Gloss Anthracite & White	16
Solo Gloss Cashmere	14
Solo Gloss Colour Options	17
Solo Gloss Light Grey	12
Solo Gloss Limestone	10
Solo Painted White & Green	18
STATELY	
Stately Shaker Painted Ivory & Oxford Blue	82
TECHNICA	
Technica Gloss Cashmere	28
Technica Gloss Light Grey	26
Technica Gloss Grey & White	33
Technica Gloss Ivory	30
Technica Gloss Stone	32
VERVE	
Verve Buttermilk	77
Verve Ivory	74
Verve Lissa Oak	71
Verve Painted Light Blue	62
Verve Sand Oak & Verve Painted Oxford Blue	66
VOGUE	
Vogue Arlington Oak	43
Vogue Brown Grey Avola & Lastra Painted Ivory	40
Vogue Driftwood	42
Vogue Lissa Oak	46
Vogue New England Oak	38
Vogue Pacific Walnut	44
Vogue Sand Oak	39
Vogue White Avola	47
OPTIONS & ACCESSORIES	
A Place for Everything	122
Cabinet Specification	110
Colour Palette	102
Make the Space Work for You	112
Door Collection	98
GRASS Nova Pro Drawer System	118
Handle-less Kitchens	108
Handle Options	106
Index & FAQs	134
Lighting & Shelving	124
More Than Just a Kitchen	132
Proudly Made in Britain	135
Sinks & Taps	126
Storage Solutions	120
The Right Way to Buy a Kitchen	130
Making the Style Work	116
Visualise your Chippendale Kitchen	105
Worktops	128

FREQUENTLY ASKED QUESTIONS

We understand you'll have potential questions which is why we've covered the ones that are asked most. However, if you have a question that isn't covered here, please contact your approved Chippendale retailer who will be able to answer your queries.

Where can I see displays of Chippendale Kitchens?

Your local Chippendale retailer will have a selection of displays and a full set of sample doors available for you to view. We strongly recommend that you view a display or sample door prior to purchasing your Chippendale Kitchen.

Can I buy direct from Chippendale?

Omega PLC are the manufacturers of Chippendale Kitchens and only sell via specialist retailers who will use their extensive knowledge and expert design skills to produce the kitchen of your dreams.

What happens if I pay a deposit to a retailer for a Chippendale Kitchen who then ceases trading before my kitchen is delivered?

In the unlikely event of this happening, we run a Deposit Guarantee Scheme. This ensures that we'll still supply your Chippendale Kitchen furniture at the current manufacturer's recommended retail price list, less the deposit paid on furniture, provided that the amount paid to the retailer does not exceed 50% of the manufacturer's recommended retail price.

Do you charge for delivery?

No, we provide **FREE*** delivery, direct to your home and our two-man delivery teams will ensure your new kitchen is delivered with care and professionalism.

*Minimum order value applies.

Do your kitchens carry a guarantee?

Yes, all Chippendale Kitchens are supplied with a 10 YEAR GUARANTEE, providing you with complete peace of mind when purchasing your kitchen. Chippendale Kitchens guarantee for a period of ten years from the date of purchase that the kitchen cabinets and fascias ("the products") manufactured by Omega PLC are free from defects in material and workmanship. Chippendale Kitchens will supply replacement products for products that do not comply with this guarantee free of charge or, at our discretion, repair such products free of charge subject to terms and conditions.

How long will it take for me to receive my Chippendale Kitchen?

Once the retailer has placed the order with us, your Chippendale Kitchen will be delivered within 6-11 days. However, In-Frame Ivory and Country (non-painted) are available within 2-3 weeks and all Painted kitchens are available within 3-4 weeks.



PROUDLY MADE IN BRITAIN

Omega PLC is proud to manufacture Chippendale Kitchens in Britain at our state-of-the-art factory facility. We source components from the UK and around the world, to ensure we only use the highest quality materials, which are then combined to produce outstanding kitchens, backed up by unrivalled customer service.

KITCHEN CHARACTERISTICS

Wood is a natural material with an endless variety of textures and grains. Variations evident on installation should diminish over a period of time to create a pleasant uniformity. As our policy is one of continuous improvement, we reserve the right to amend designs and specifications without prior notice. Where real wood veneers are used on external surfaces, we are unable to guarantee an exact match due to natural variations in colour and grain.

The colours in this brochure are as accurate as the printing process will allow, and we recommend that you view a display or sample door at one of our approved retailers prior to purchase. Errors and omissions excepted.

For more information and helpful advice on buying a kitchen, please visit:

chippendalekitchens.co.uk

GEORGE CLARKE
CHIPPENDALE BRAND AMBASSADOR



CHIPPENDALE®

UNMISTAKABLY BRITISH

PART OF



OMEGA PLC

THE VERY BRITISH COLLECTION



For further information please contact:

The Customer Service Department, Chippendale Kitchens, Omega Boulevard, Capitol Park, Thorne, Doncaster DN8 5TX

Tel: 01405 743335 | Fax: 01405 743330 | chippendalekitchens.co.uk