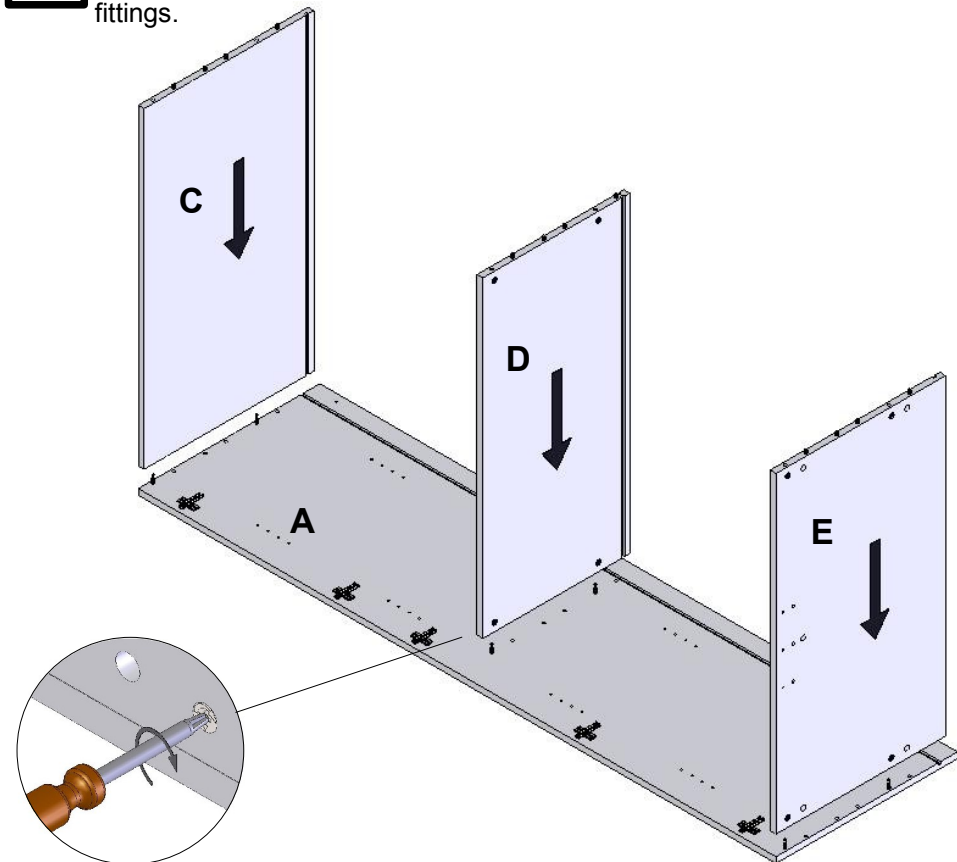


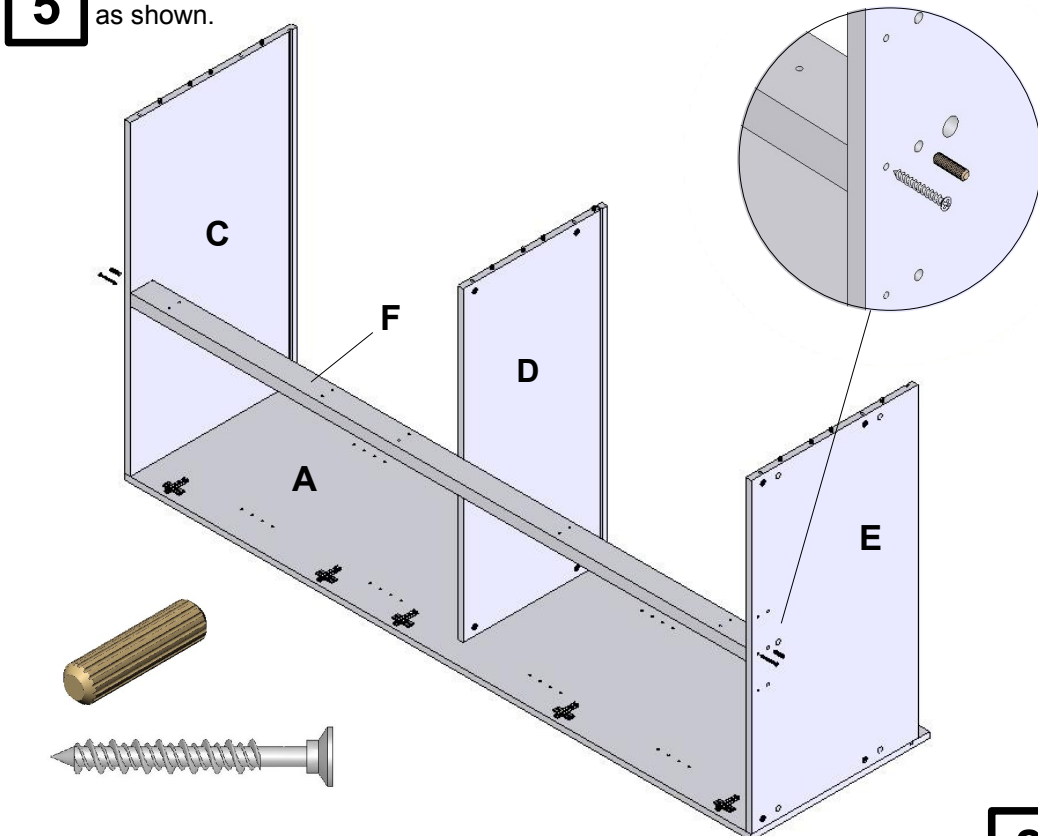
**CT54 RTA only 27.7.16**

**NOTE: THIS ASSEMBLY INSTRUCTION SHOWS A MEDIUM HEIGHT UNIT, THE TALLER VERSION OF THIS UNIT IS CONSTRUCTED IN THE SAME WAY.**

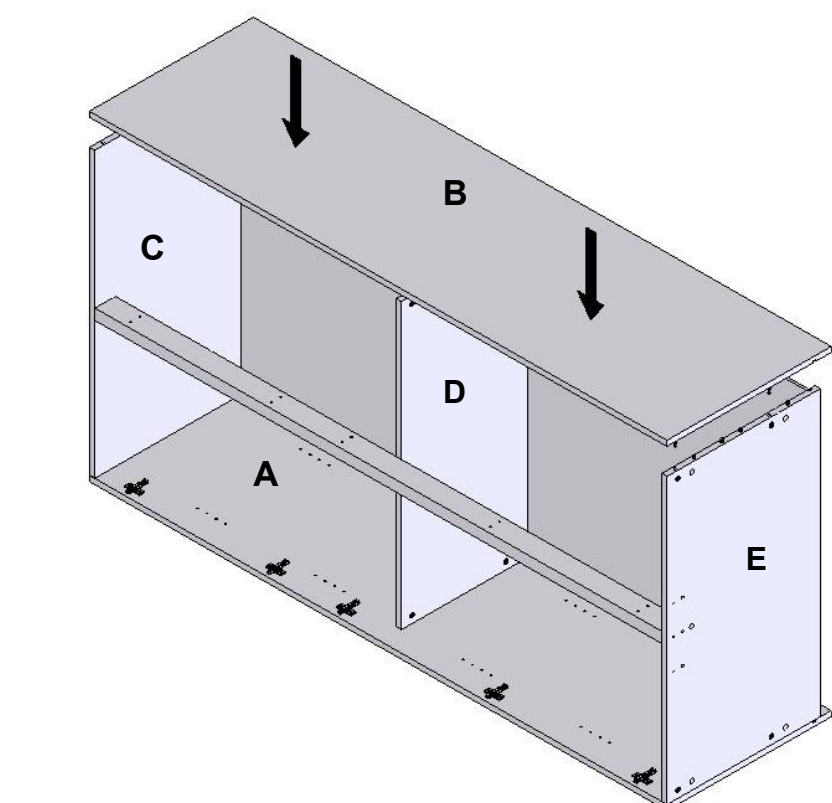
- 3** Lay end panel **A** on floor and fit top panel **C** mid panel **D** and base panel **E**. Align all dowels and tighten cam fittings.



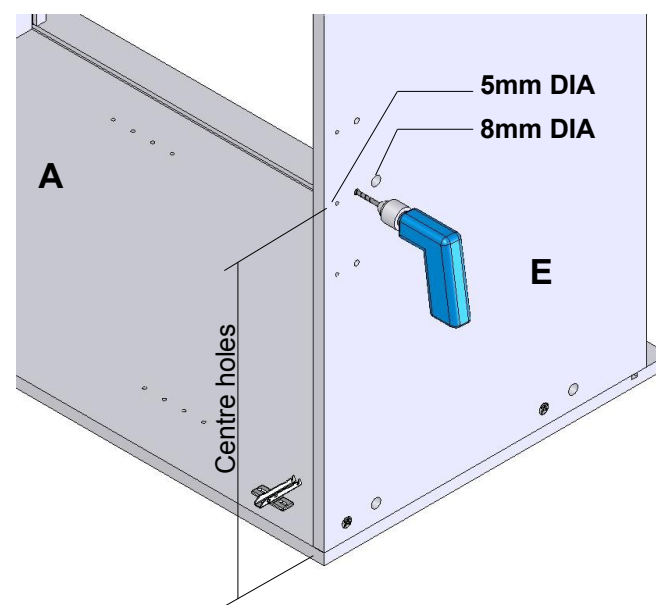
- 5** Position front mullion **F** and secure carcass screws and dowels as shown.



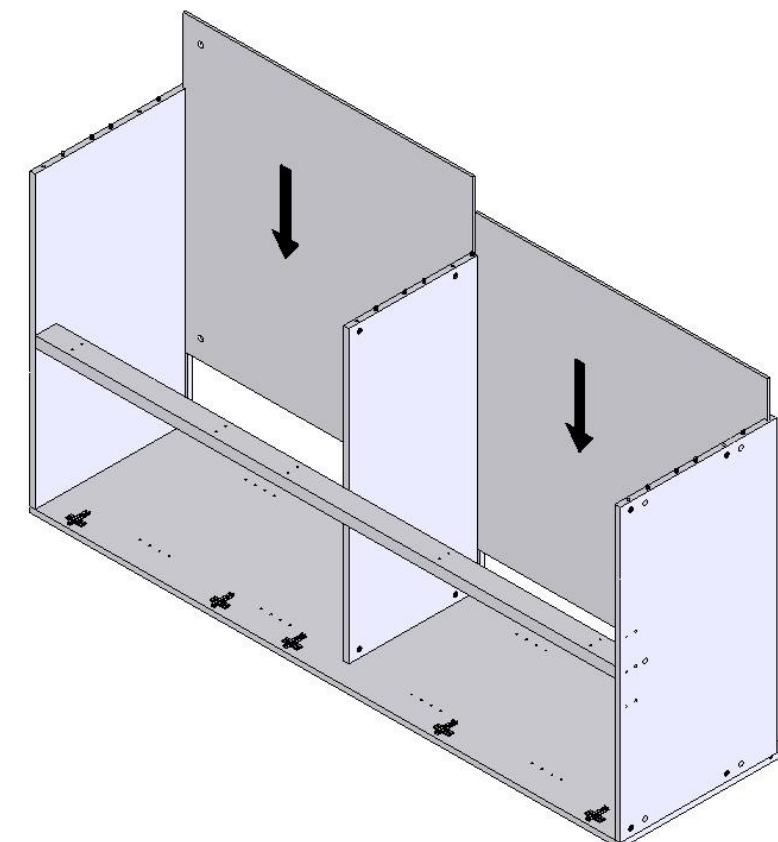
- 7** Position end panel **B** above all panels and secure.



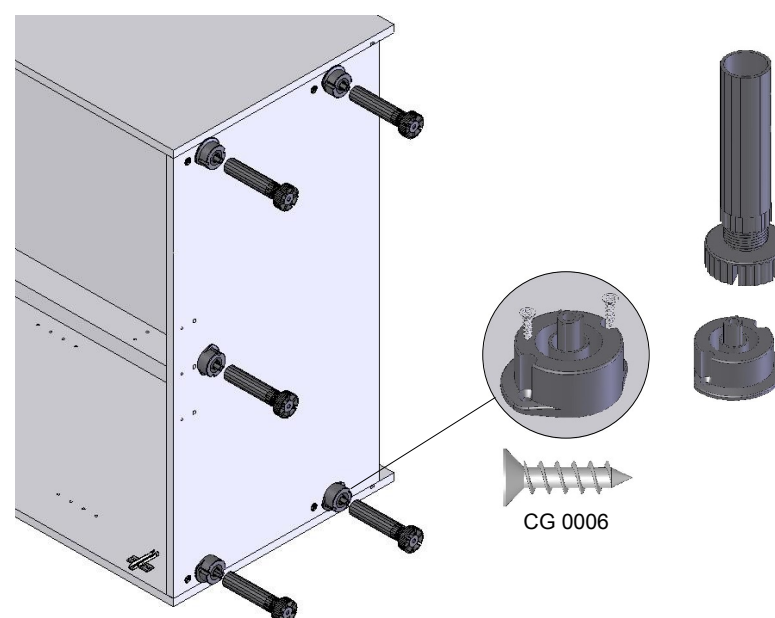
- 4** Select centre set of holes and bore holes through base and top panels as shown.



- 6** Slide upper and lower back panels into place as shown.



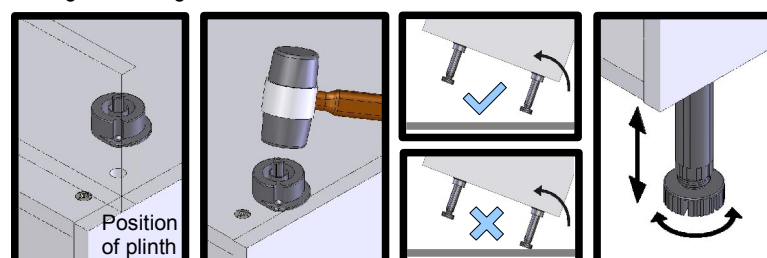
- 8** Fit legs as shown to base of unit.



## Legs and leg bosses

Fit the leg bosses into the base panel of the unit. Turn the leg boss so the flange extends over the end panels. If the leg boss is at the front of the unit, the flat edge of the flange must be square to the end panel or it will foul the plinth. Tap the centre pin of the leg boss down until it is flush with the panel. (This does not need great force.)

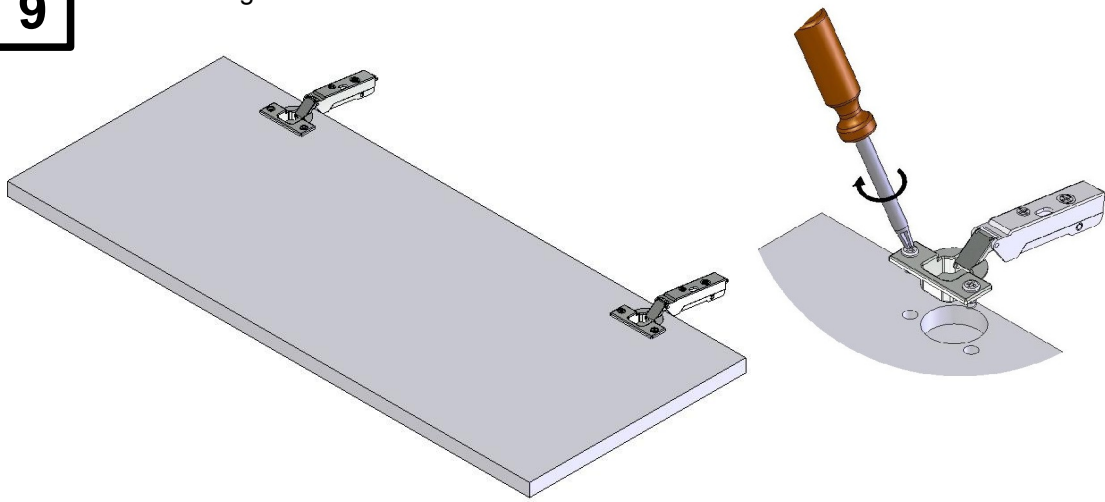
Fix leg boss using 2 x No 6 1/2" screws.



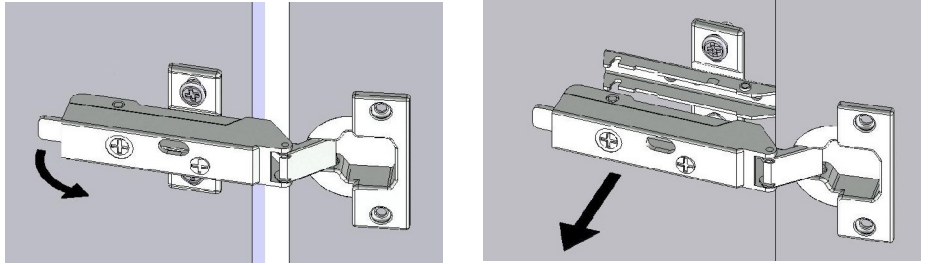
Take care turning the unit over. (We recommend 2 people.) Do not allow the full weight of the unit to rest on the legs before the unit is upright. Push adjustable leg into leg boss. Adjust the height of the unit by turning the bottom of the leg. If necessary a flathead screwdriver can be used in the slots.



**9** Screw fix hinges to each door as shown.

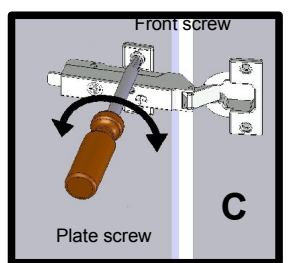
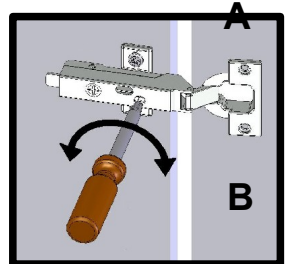
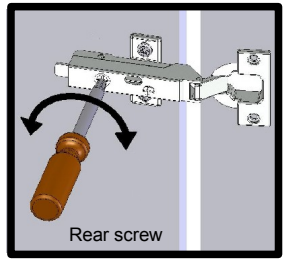
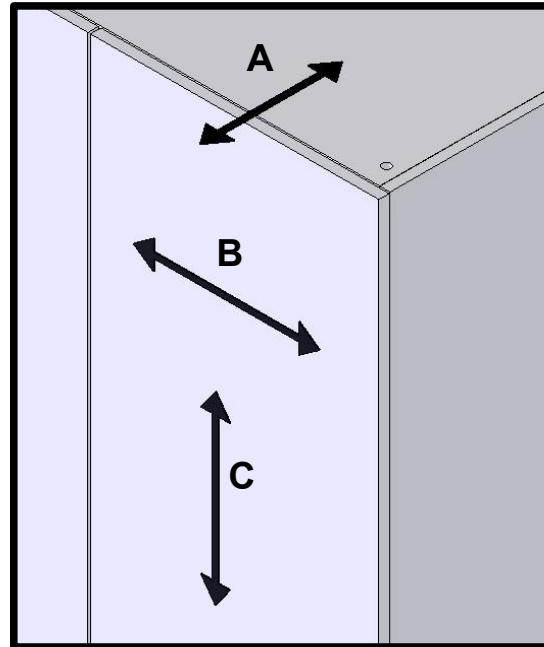


**10** Clip hinges onto hinge plates. To release hinges from plates, lift the rear release clip as shown.

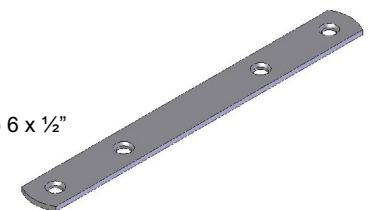
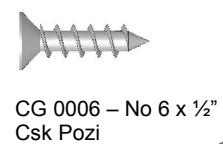
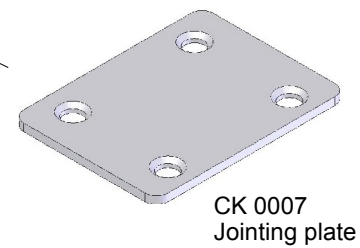
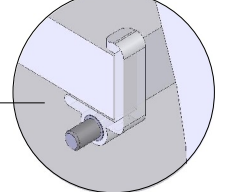
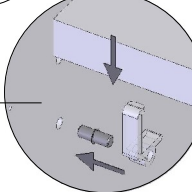
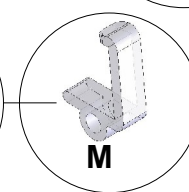
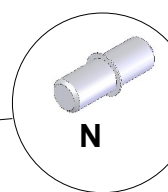
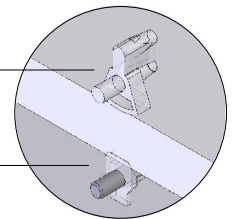
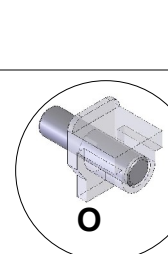
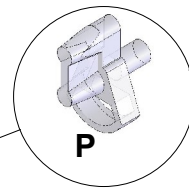
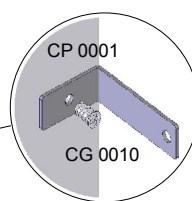
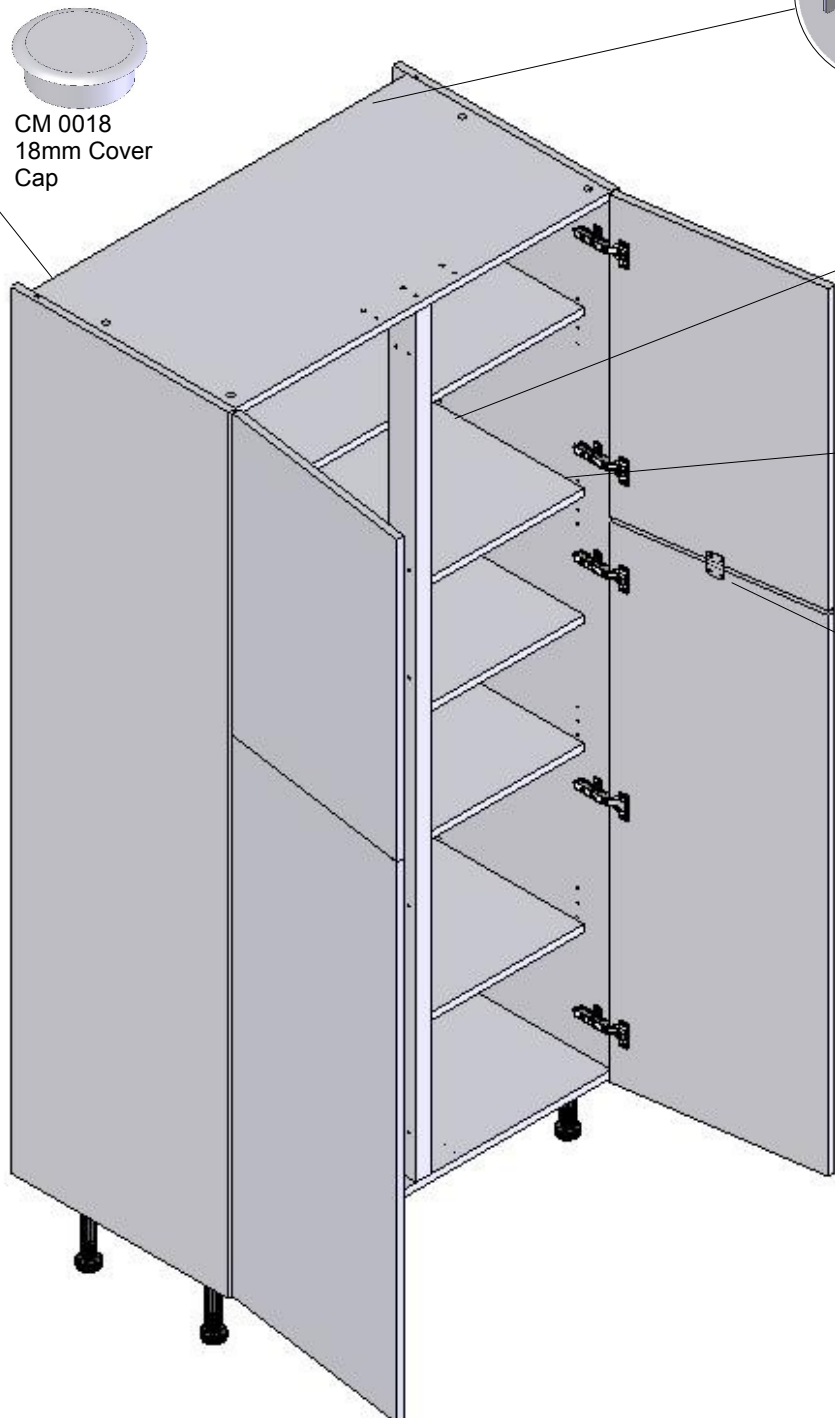
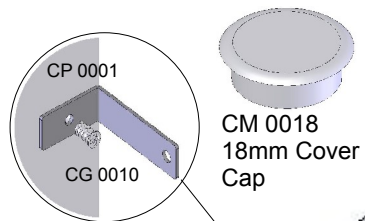


### Hinge adjustment

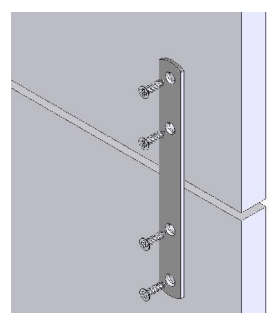
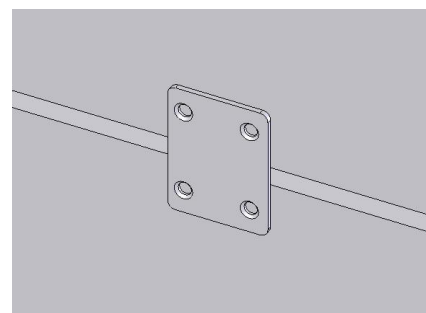
By turning the hinge adjuster screws as shown the doors can be adjusted in various directions.



**11** Fit rear wall brackets to align with holes in upper back panel. Fix unit to rear wall using suitable screw fixings and wall plugs (not supplied) through rear wall brackets. Cap holes in back panel using 18mm cover caps. Fit additional shelves by fitting shelf pegs O to rear holes. Then fit front retaining pegs M / N to front shelf holes ( as shown ). Finally fit top retaining pegs P to rear holes above the shelf



**12** Join doors together using connecting plate and screws as shown.



For use on J pull doors