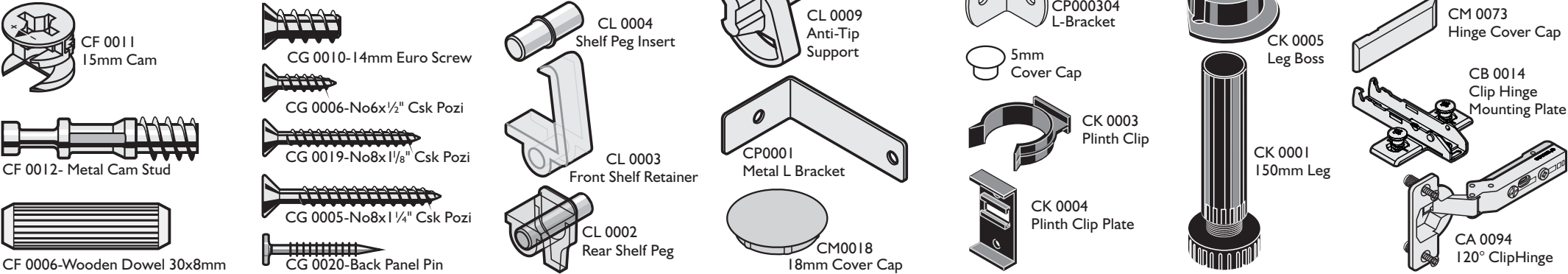


# 2297 TALL UNIT ASSEMBLY INSTRUCTIONS

## Fitting Identification List

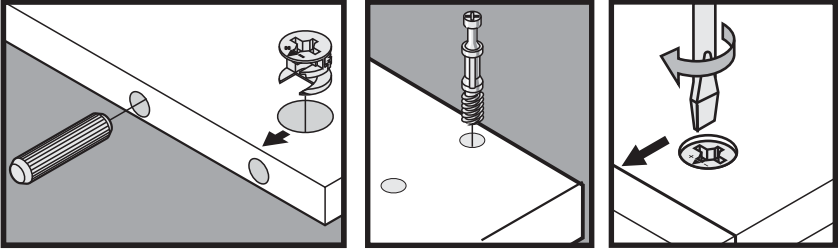


## Tall Unit Configurations

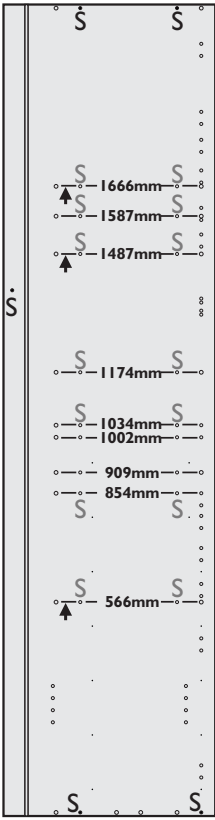
|                       |  |   |   |                       |                       |                       |                              |  |  |  |  |                                |                                |                                    |                                      |                        |                        |
|-----------------------|--|---|---|-----------------------|-----------------------|-----------------------|------------------------------|--|--|--|--|--------------------------------|--------------------------------|------------------------------------|--------------------------------------|------------------------|------------------------|
| DOOR<br>670mm<br>High | DOOR<br>670mm<br>High                  | DOOR<br>670mm<br>High                   | DOOR<br>490mm<br>High                     | DOOR<br>670mm<br>High | DOOR<br>670mm<br>High | DOOR<br>670mm<br>High | DOOR<br>670mm<br>High        | DOOR<br>572mm<br>High                  | DOOR<br>572mm<br>High                  | DOOR<br>572mm<br>High                  | DOOR<br>572mm<br>High                  | DOOR<br>670mm<br>High          | DOOR<br>670mm<br>High          | DOOR<br>1245mm<br>High             | 140/176mm<br>***                     | DOOR<br>896mm<br>High  | DOOR<br>896mm<br>High  |
| 1487mm                | 1487mm                                 | 1487mm                                  | 1666mm                                    | 1487mm                | 1487mm                | 1487mm                | 1487mm                       | 1587mm                                 | 1587mm                                 | 1587mm                                 | 1587mm                                 | 1487mm                         | 1487mm                         | 909mm                              | DOOR<br>1245mm<br>High               | 1252mm                 | 1252mm                 |
| 566mm                 | 566mm                                  | 566mm                                   | 1174mm<br>**                              | 854mm<br>g=140mm      | 854mm<br>g=140mm      | 854mm<br>g=140mm      | 1002mm<br>h=140mm<br>g=140mm | 1034mm<br>**                           | 1034mm<br>**                           | 1034mm<br>**                           | 1034mm<br>**                           | 896mm<br>High                  | 896mm<br>High                  | 566mm                              | DOOR<br>896mm<br>High                | DOOR<br>1245mm<br>High | DOOR<br>1245mm<br>High |
| DOOR<br>572mm<br>High | C=284mm<br>Drawer<br>a=284mm<br>Drawer | d=140mm<br>C=140mm<br>a=284mm<br>Drawer | DOOR<br>572mm<br>High                     | DOOR<br>716mm<br>High | DOOR<br>572mm<br>High | DOOR<br>572mm<br>High | DOOR<br>716mm<br>High        | C=284mm<br>Drawer<br>a=284mm<br>Drawer | C=284mm<br>Drawer<br>a=284mm<br>Drawer | C=284mm<br>Drawer<br>a=284mm<br>Drawer | C=284mm<br>Drawer<br>a=284mm<br>Drawer | DOOR<br>572mm<br>High          | DOOR<br>572mm<br>High          | DOOR<br>572mm<br>High              | DOOR<br>896mm<br>High                | DOOR<br>716mm<br>High  | DOOR<br>716mm<br>High  |
| Type 1<br>Double Oven | Type 2<br>Double Oven                  | Type 3<br>Double Oven                   | Type 5<br>Single Oven<br>and<br>Microwave | Type 6<br>Single Oven | Type 7<br>Single Oven | Type 8<br>Single Oven | Type 9<br>Microwave          | Type 10<br>Microwave/<br>Coffee Maker  | Type 11<br>Microwave/<br>Coffee Maker  | Type 12<br>Microwave/<br>Coffee Maker  | Type 13<br>Microwave/<br>Coffee Maker  | Type 1<br>Fridge or<br>Freezer | Type 2<br>Fridge or<br>Freezer | Type 5<br>Fridge<br>and<br>Freezer | Type 6<br>Combi<br>Fridge<br>Freezer | 300<br>Larder          | 500<br>Larder          |


## 15mm Cam & Metal Cam Stud

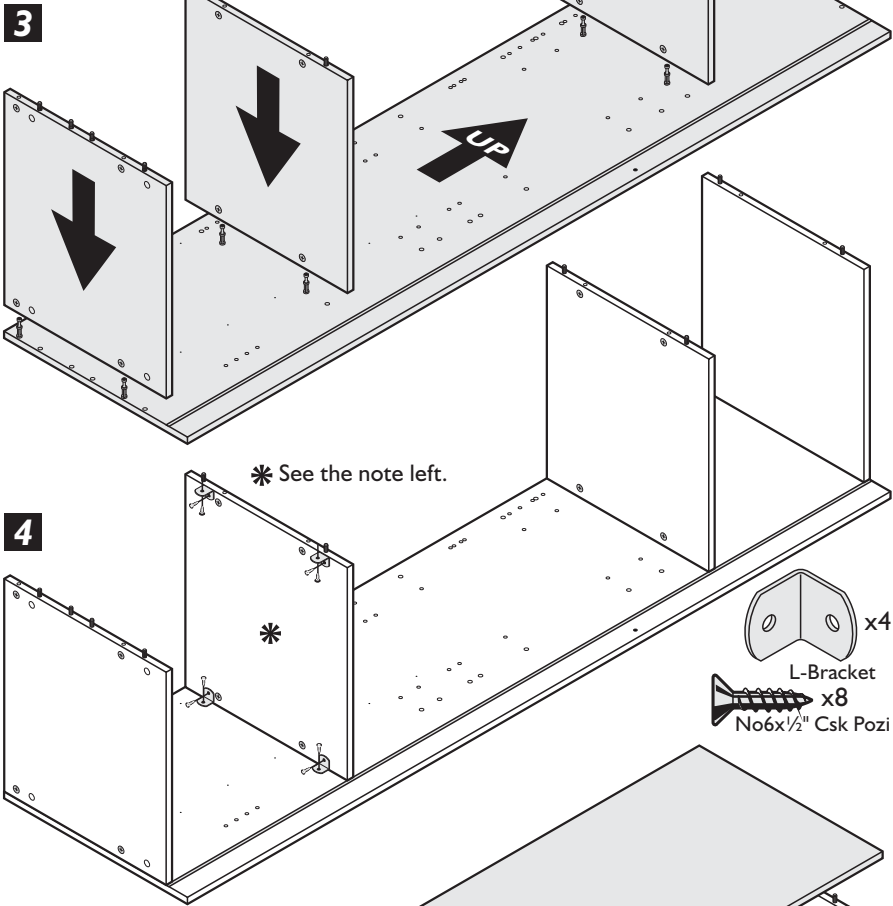
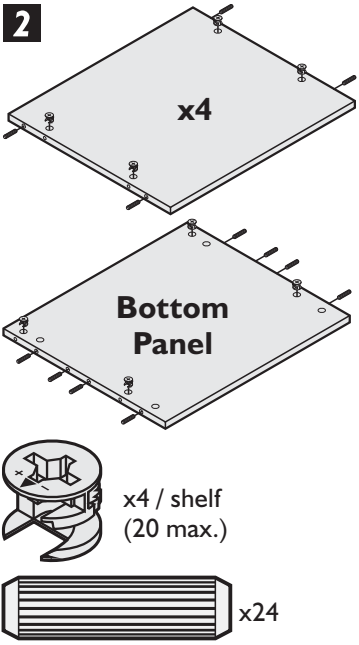
- Put the 15mm cams and wooden dowels into the panels and rails. The arrow on the cam must point to the edge of the panel.
- Fix the metal cam studs into the end panels in the holes indicated with a letter 'S'. Where the letter 'S' is grey, this is a fixed shelf position. Refer to the unit diagrams for the correct location for the unit being assembled.
- Lay the one end panel on a clean surface (the packaging is ideal).
- Position the first panel so the metal cam studs and wooden dowels line up with the holes and all 15mm cams are to the outside of the unit.
- PVA wood glue (not supplied) may be used on the wooden dowels.
- Push the panels firmly together until they meet completely.
- Turn the 15mm cams clockwise with a suitable screw driver (Do not use an electric screwdriver).



## Assembly- Appliance Tower

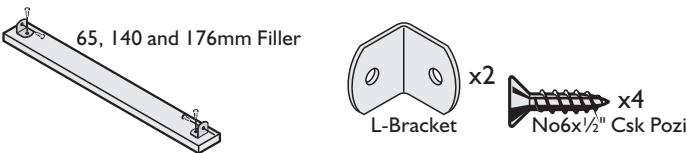


- 1** -All Units are fitted with a top and bottom panel (the Panel with the extra holes for feet). Refer to the illustrations on the right for the position of the fixed shelves. Put 4 Metal Cam Studs into the end panels in the positions shown for that shelf. This illustration only shows the right-hand panel, the lefthand panel is a mirror image.
- If drawers are being fitted, refer to the template packed with the drawer box. It is easier to fit the runners before assembling the carcass. The codes on each drawer (a, b, c etc.) are the codes for the drawer runner positions.
- Trim the backs as required. The Type 5 Fridge Freezer and Type 6 Combi Fridge Freezer are assembled without backs.
- Type 5, 6, 7, 8 & 9 Single Oven- Do not fit the front dowel on the shelf supporting a single oven.
- \*\* IMPORTANT-** Every fixed shelf supporting an appliance must have 4 metal brackets fitted underneath. See Step 4.
- Refer to the appliance manufacturer's installation instructions for information on ventilation.
- \*\* NOTE-** Types 5, 10, 11, 12, 13 Single Oven and Microwave. Check that the shelf position is correct for the height of the appliances before assembling the unit.
- \*\*\* Type 6-** Refer to filler instructions below.
- S-**  x4 / shelf (20 max.)



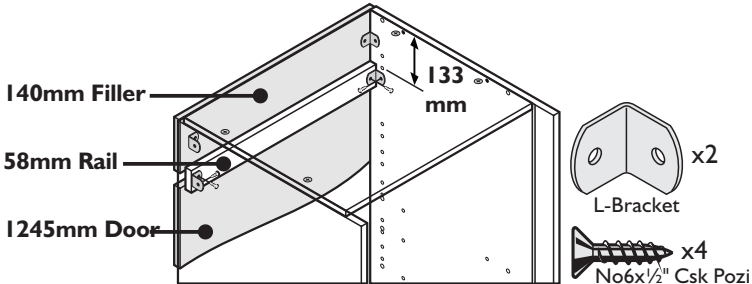
## Oven Housing Fillers

-The filler is supplied in one of three sizes, either 65, 140 or 176mm high and is fitted to the unit with 2 metal brackets.

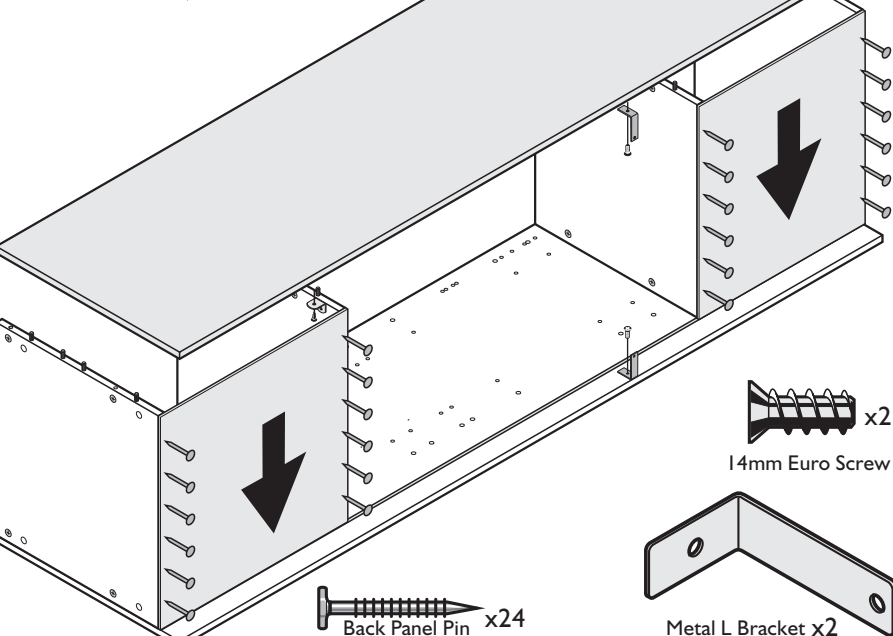
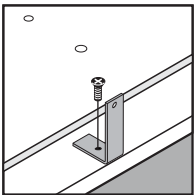


**\*\*\* Type 6 Combi Fridge Freezer Only.**

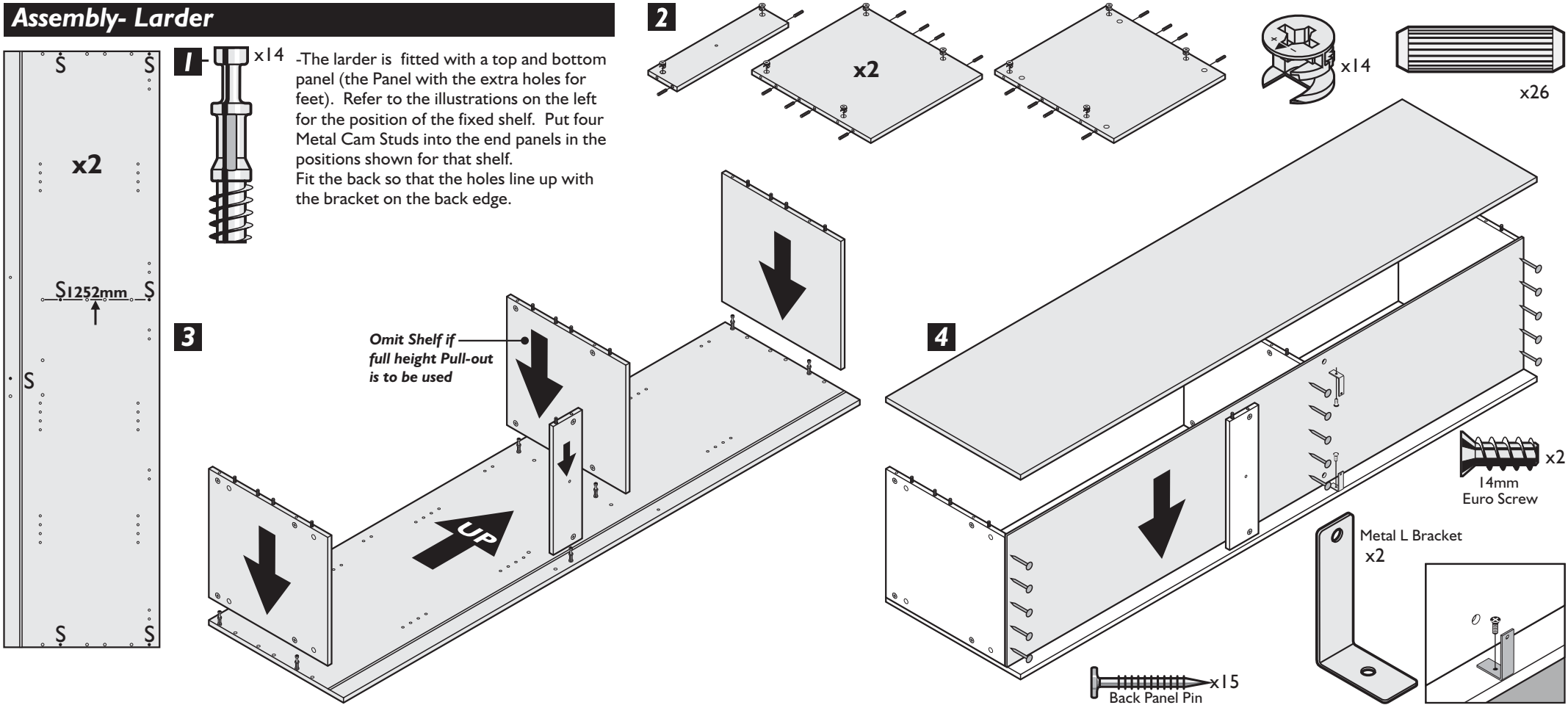
If this unit is supplied with a 140mm high filler, it will be necessary to fit an extra 58mm rail in the position shown.



- 5** The back panel is supplied in one full piece which requires cutting to size to suit the unit ordered.
- Type 5 and Type 6 Fridge Freezer housings are assembled without a back.

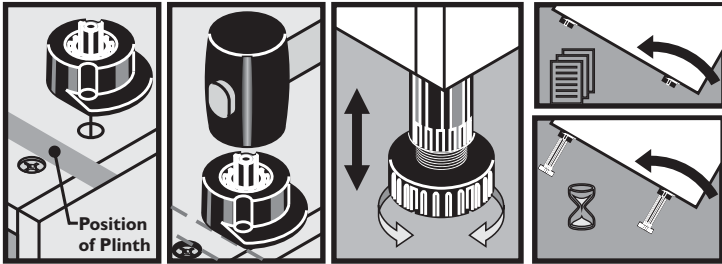


Assembly- Larder



Legs and Leg Bosses

-Fit the leg bosses into the base panel of the unit. Turning the leg boss so the flange extends over the end panels. If the leg boss is at the front of the unit, the flat edge of the flange must be square to the end panel or it will foul the plinth.  
-Tap the centre pin of the leg boss down until it is flush with the top. This does not need great force.  
-Turn the unit over and stand it on blocks 200 - 240mm thick and fit the legs from below.  
-Take care turning the unit over. Do not allow the full weight of the unit to rest on the legs before the unit is upright.  
-Adjust the height of the units by turning the bottom of the leg. If necessary a flathead screwdriver can be used in the slots.



Plinth Fixing and Connecting Units

**IMPORTANT-** Refer to the appliance manufacturer's installation instructions for information on ventilation.  
-Position and level the unit.  
-Turn the brackets out of the way. Drill and plug the wall. For Larder Units this can be done through the access hole in the back. Screw the unit to the wall. Fit the 18mm cover caps over the access hole.  
-Position any adjacent units and clamp the units together. Fix with No.8 x 1 1/4" screws. Try and locate these screws behind the hinge plates, drawer runners etc. so they will be hidden.  
-Fit the plinth return first and scribe to the wall. Mitre the joint with the plinth and notch the top edge on the back to clear the leg bosses.  
-Refer to the illustrations for the position of the plinth clips.  
-Lay the plinth on the floor against the legs and mark the centre of the legs onto the plinth. In a run of units, use only 1 plinth clip on the adjacent legs.

Add-on End Panel and Divider Fixing

-Add-on panels and dividers are designed to project 25mm in front of the carcass edge to give a 'fitted door' appearance.  
-Fix the add-on panel and dividers from inside the unit with No.6x1" screws. The screws can be concealed behind the hinge plates, drawer runners etc.

Hinges, Doors and Shelf

-Put the hinge and hinge plate together before fitting to the door as this makes finding the mounting holes in the end panels easy.  
-The door can open either left or right. Attach the hinges to one side of the door only.  
-Put the shelf into position with 2 Shelf Peg Inserts and 2 Front Shelf Retainers at the front and 2 shelf pegs at the back.  
-At the back of each shelf, fit an anti-tip support into the hole one space above the shelf.

