

930 'L' CORNER BASE ASSEMBLY INSTRUCTIONS

CT19 RTA 31.9.16

Fitting identification list

x 4
CG 005 – No 8 x 1¼" Csk Pozi

x 2
CG 0010 – 14mm Euro screw

M x 10
CG 0001 – 45mm Carcase screw

L x 22
CF 0006 – Wooden dowel 30 x 8mm

x 12
CG 0006 – No 6 x ½" Csk Pozi

S x 14
CF 0012 – Metal cam stud

x 2
CP 0001
Metal L bracket

L x 4
CL 0002
Shelf peg

M x 2
CL 0003
Shelf peg

x 3
CK 0003
Plinth clip

x 6
CK 0005
Leg boss

x 6
CK 0001
150mm Leg

N x 2
CL 0004
Shelf peg

x 3
CK 0004
Plinth clip plate

K x 14
CF 0011
15mm Cam

W x 2
CAN 0010
Grey worktop block

CO 0002
Door buffer

x 4
CP 0004
Connecting plate (Drawer line only)

R x 4
CL 0005
Plastic washer

P x 2
CL 0009
Shelf peg

5mm Cover Cap
8mm Cover Cap

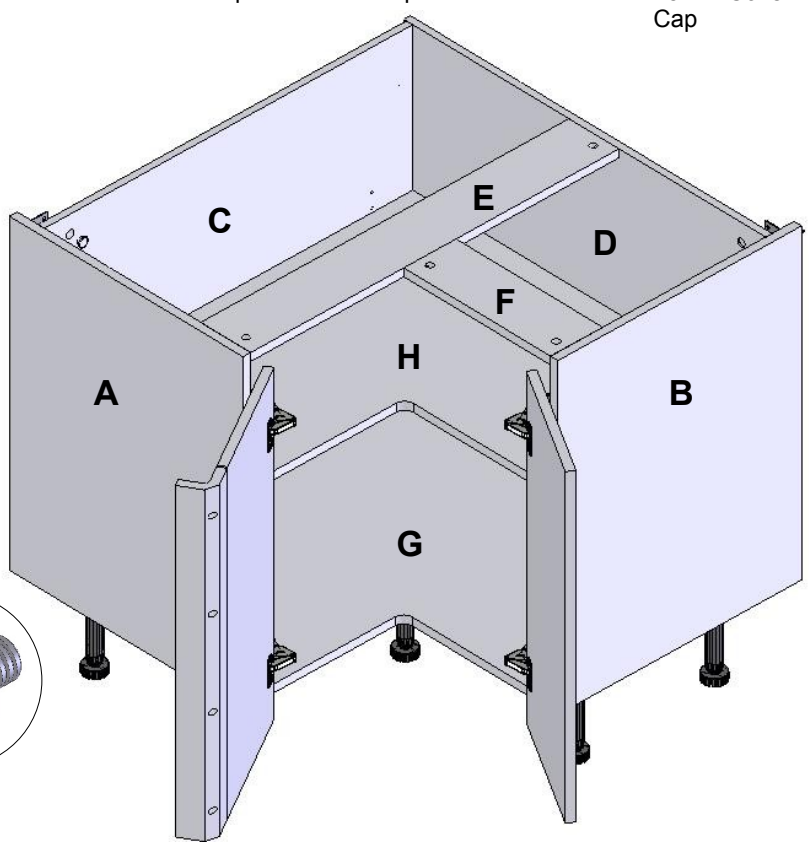
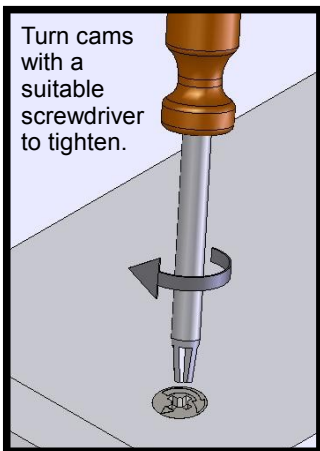
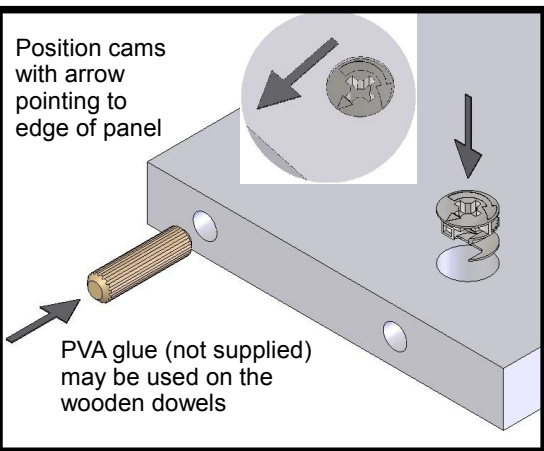
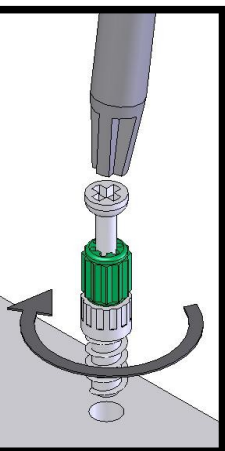
x 2
CM 0018
18mm Cover Cap

J x 4
CB 0014
Clip hinge mounting plate

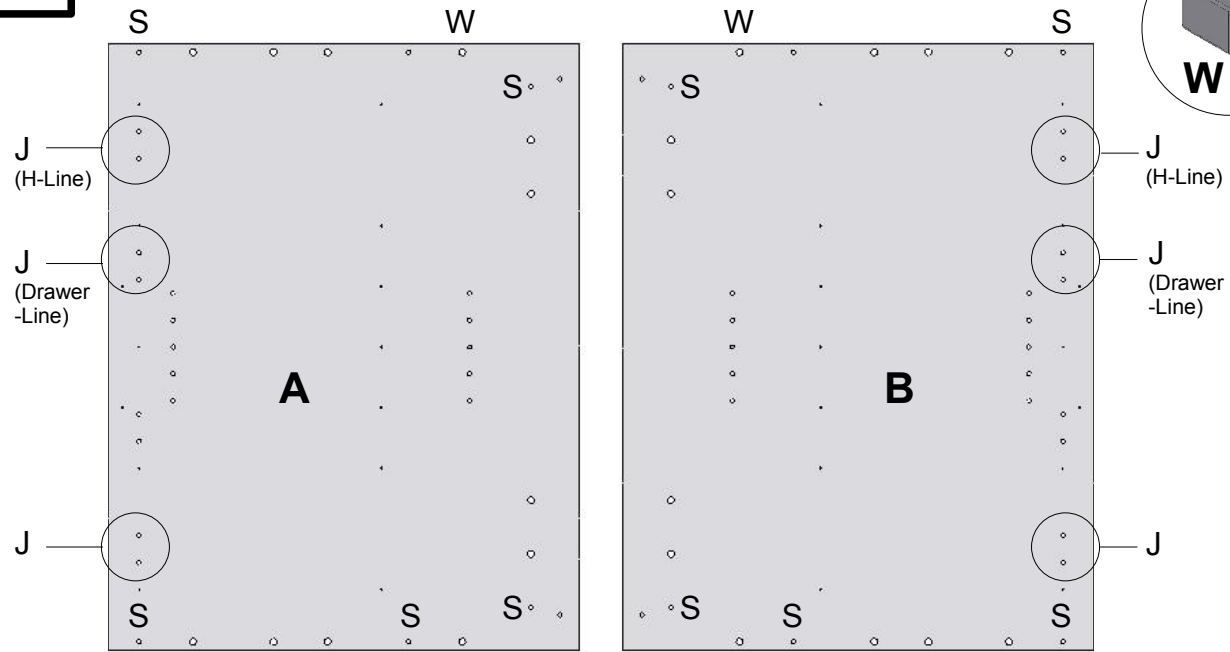
x 4
CA 0095
160 deg clip hinge

Cam & Metal Cam Stud

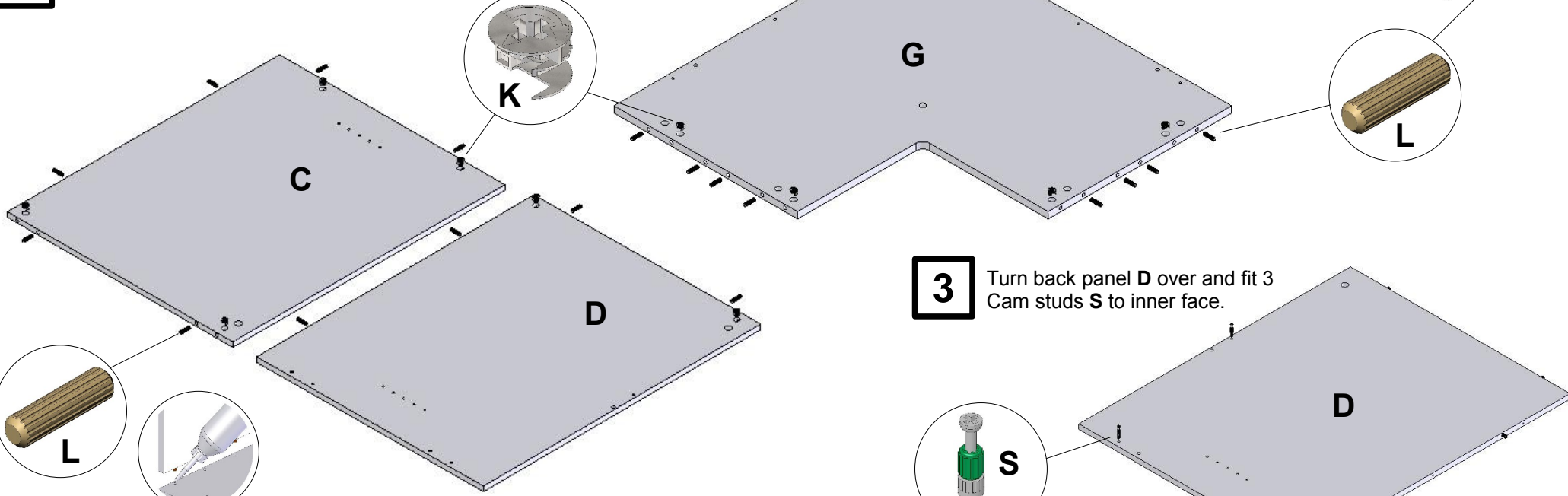
Position the first panel so the metal cam studs and wooden dowels line up with the holes and all cams are to the outside of the unit.
Use a rubber mallet to tap the panels completely together to avoid damage to the cams and panels.
Turn the cams clockwise with a suitable screwdriver. (Do not use an electric screwdriver)



1 Fit the metal cam studs **S** and worktop blocks **W** to the universal end panels **A** and **B**.
Screw fix 2 hinge plates **J** to each panel, selecting high-line or drawer line hinge positions.



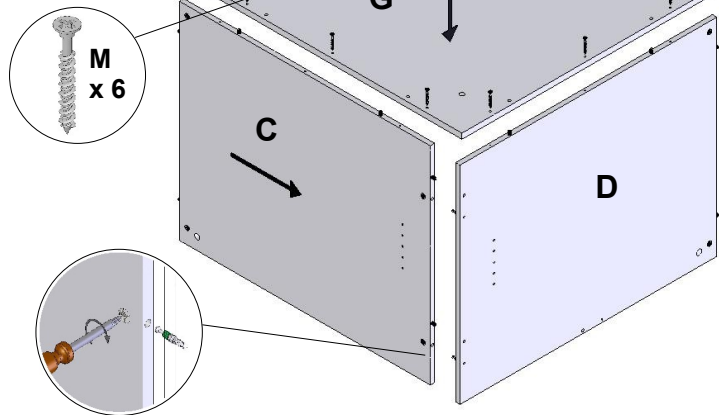
2 Insert cams and dowels into holes in back panels **C** and **D**, base panel **G** and top rails **E** and **F**.



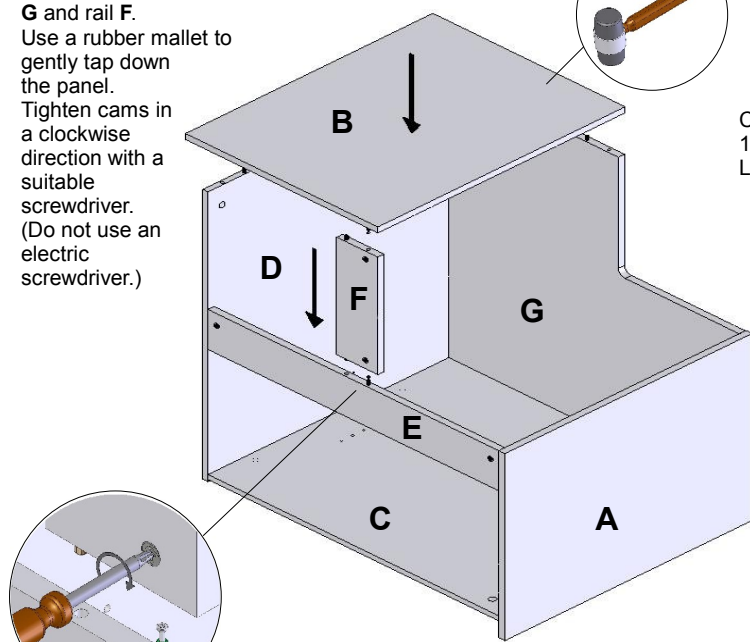
3 Turn back panel **D** over and fit 3 Cam studs **S** to inner face.

PVA wood glue (not supplied) may be used on the wooden dowels.

- 4** Fix back panels **C** and **D** together using cam fittings **K** and cam studs **S**. (ensuring that cam fittings are to the outside)
Tighten cams in a clockwise direction with a suitable screwdriver.
(Do not use an electric screwdriver.)
Position base panel **G** onto back panels **C** and **D**, using wooden dowels on backs to locate its position.
Fix base in position using 6 x 45mm carcass screws **M**.



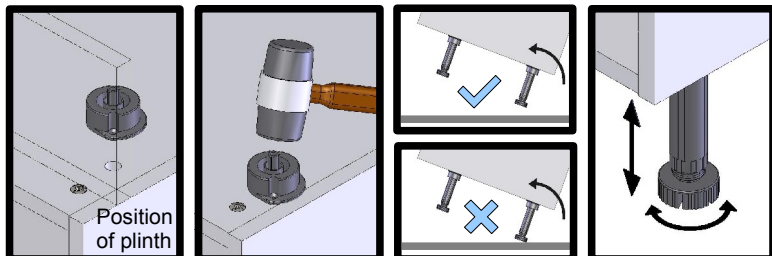
- 6** Turn unit so that left hand back panel **C** is on the floor.
Fix top rail **F** to rail **E** and tighten.
Fix end panel **B** to back **D**, bottom



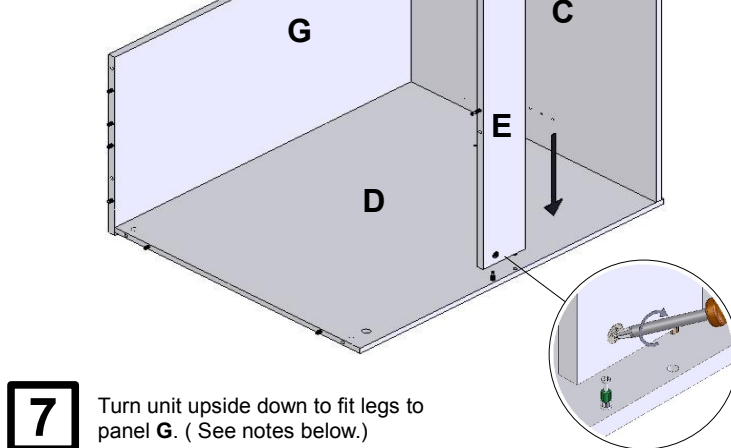
Legs and leg bosses

Fit the leg bosses into the base panel of the unit. Turn the leg boss so the flange extends over the end panels. If the leg boss is at the front of the unit, the flat edge of the flange must be square to the end panel or it will foul the plinth. Tap the centre pin of the leg boss down until it is flush with the panel. (This does not need great force.)

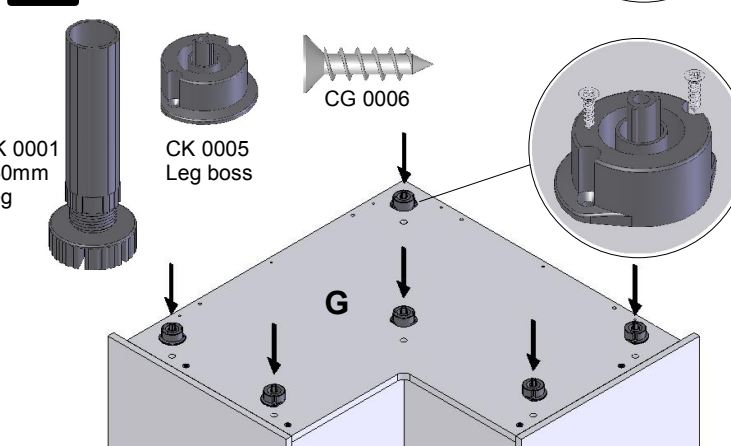
Fix leg boss using 2 x No 6 1/2" screws.
Take care turning the unit over. (We recommend 2 people) Do not allow the full weight of the unit to rest on the legs before the unit is upright.
Push adjustable leg into leg boss. Adjust the height of the unit by turning the bottom of the leg. If necessary a flathead screwdriver can be used in the slots.



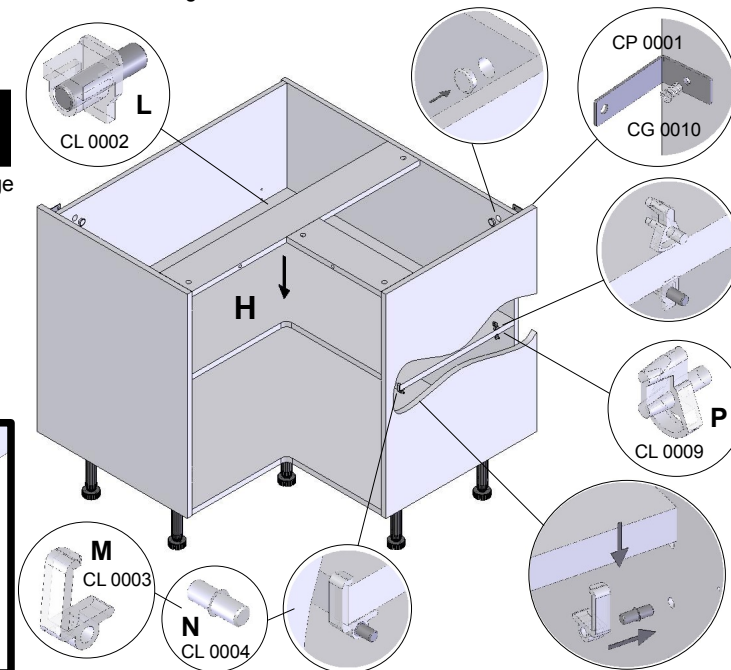
- 5** Turn unit so that right hand back panel **D** is on the floor.
Fix top rail **E** to back panel **D**.
Fix end panel **A** to back **C**, bottom **G** and rail **E**.
Use a rubber to gently tap down the panel.
Tighten cams in a clockwise direction with a suitable screwdriver.
(Do not use an electric screwdriver.)



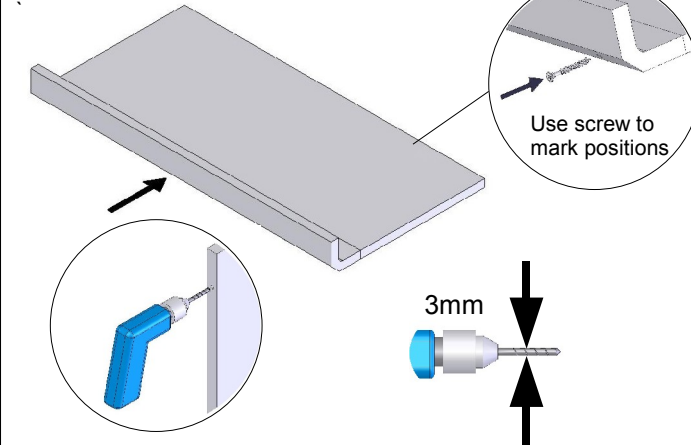
- 7** Turn unit upside down to fit legs to panel **G**. (See notes below.)



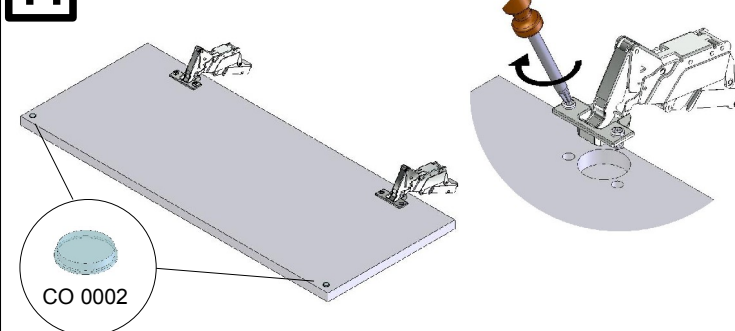
- 8** Fit metal 'L' brackets to back of unit using 2 x 14mm Euro screws.
Cap access holes in back panel using 18mm cover caps.
If a shelf is being fitted, position 4 shelf pegs **L** to shelf holes in back panels and rear holes in end panels. Drop shelf **H** into position, then fit 2 front retaining pegs **M** / **N** to front holes in ends, (as shown). Finally fit two top retaining pegs **P** to rear holes above shelf on end panels. (Note the shelf should be fitted before worktops are fitted above the unit.)
If a carousel fitting is to be used, discard the shelf and fit the wire work.



- 9** Fix corner post to door using 45mm Carcase screws **M**.
Lay the door on a flat surface, line up the post with the door edge and mark the hole positions on the door edge. (This can be done by pressing the carcase screw through the hole in the corner post and into the door edge.)
Pilot drill the door edge in the positions marked using a 3mm drill bit, making sure the drill is held straight.

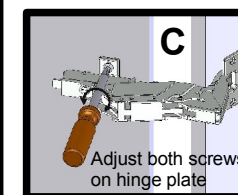
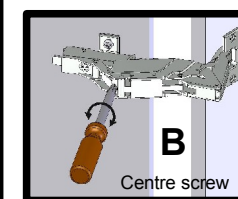
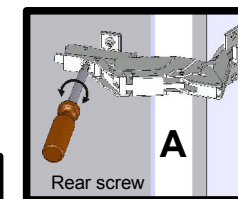
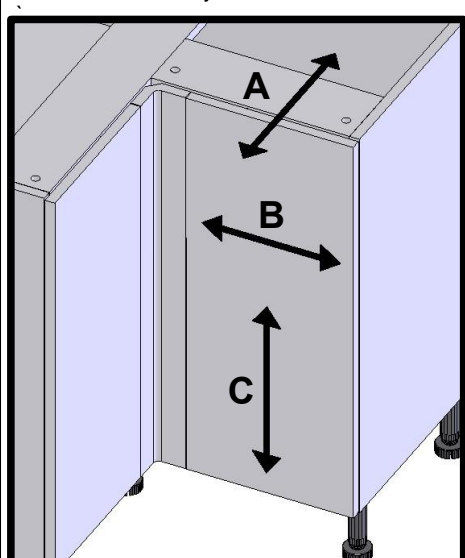


- 11** Screw fix hinges to each door and fit door buffers to corners of door as shown.

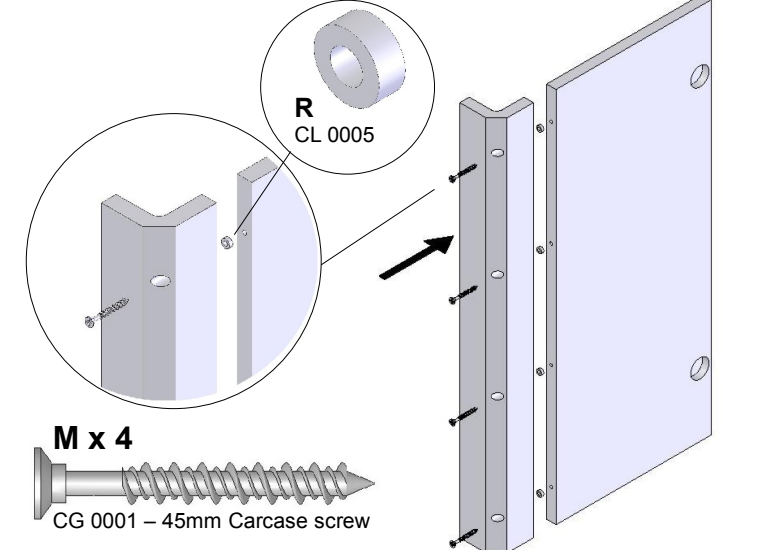


Hinge adjustment

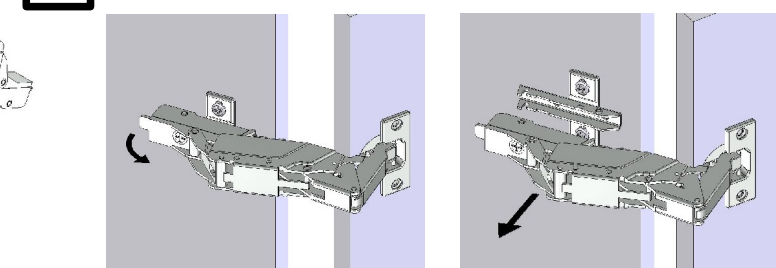
By turning the hinge adjuster screws as shown the doors can be adjusted in various directions.



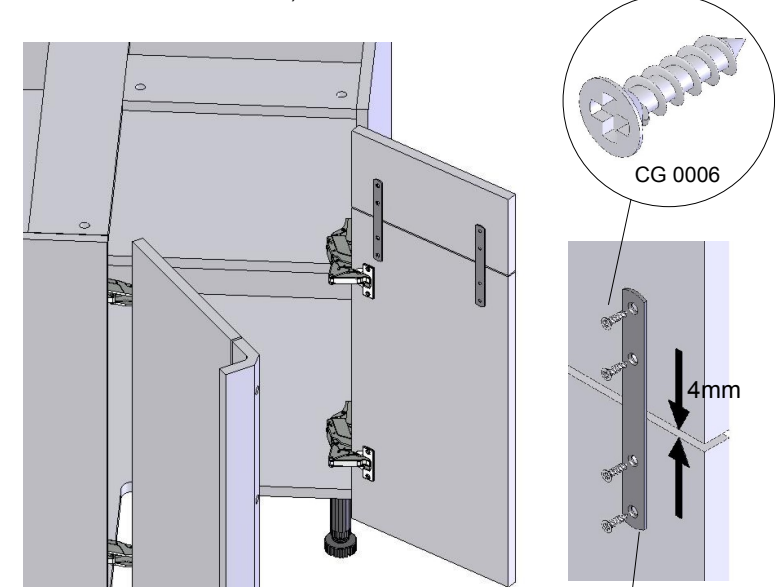
- 10** Screw fix the corner post to the door using 4 x 45mm Carcase screws **M**. Position a plastic washer **R** on each screw between the post and the door to give the correct spacing.



- 12** Clip hinges onto hinge plates.
To release hinges from plates, lift the rear release clip as shown.



- 13** When using drawer line doors, the door and drawer front must be strapped together using the CP 0004 Connecting plates and screws CG 0006 as shown. (A gap of 4mm should be maintained between the door and drawer front.)



- 14** Bore each door and fit handles.

