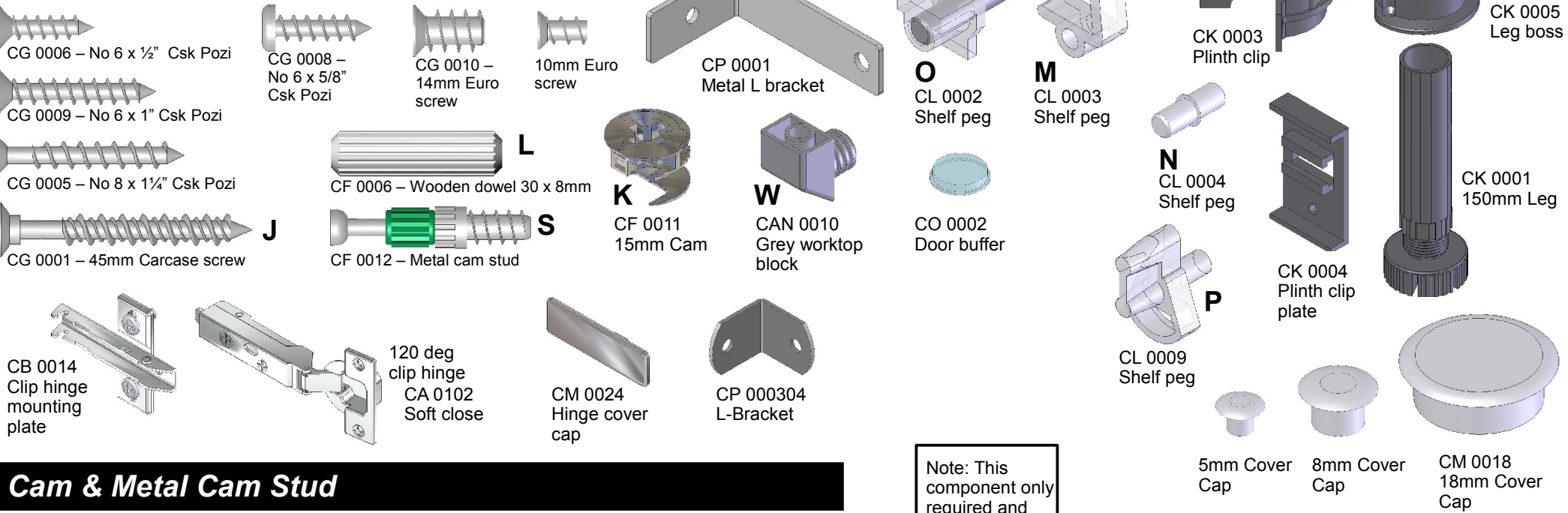


BASE UNIT ASSEMBLY INSTRUCTIONS

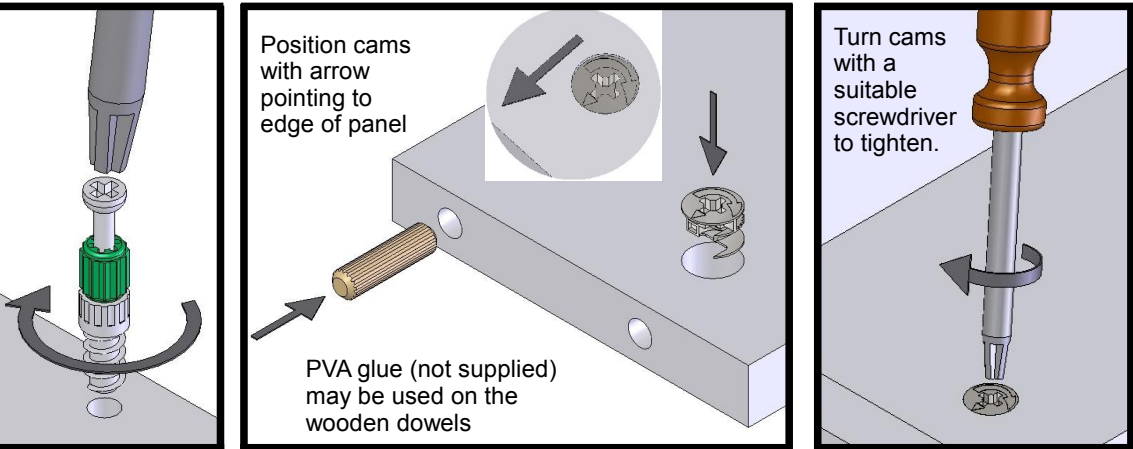
CT10 RTA only 22.12.16

Fitting identification list

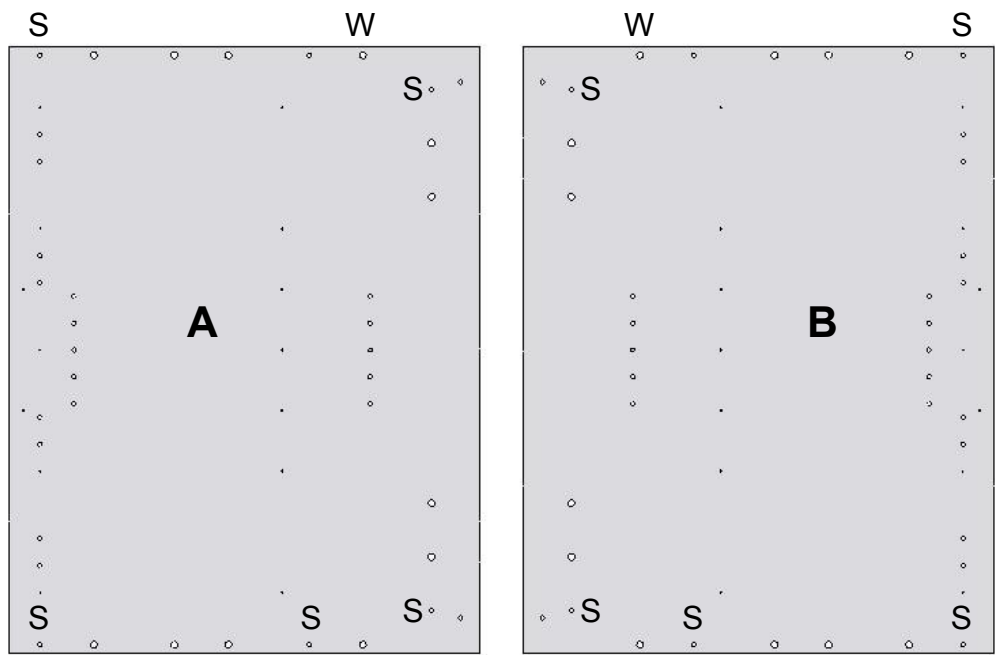


Cam & Metal Cam Stud

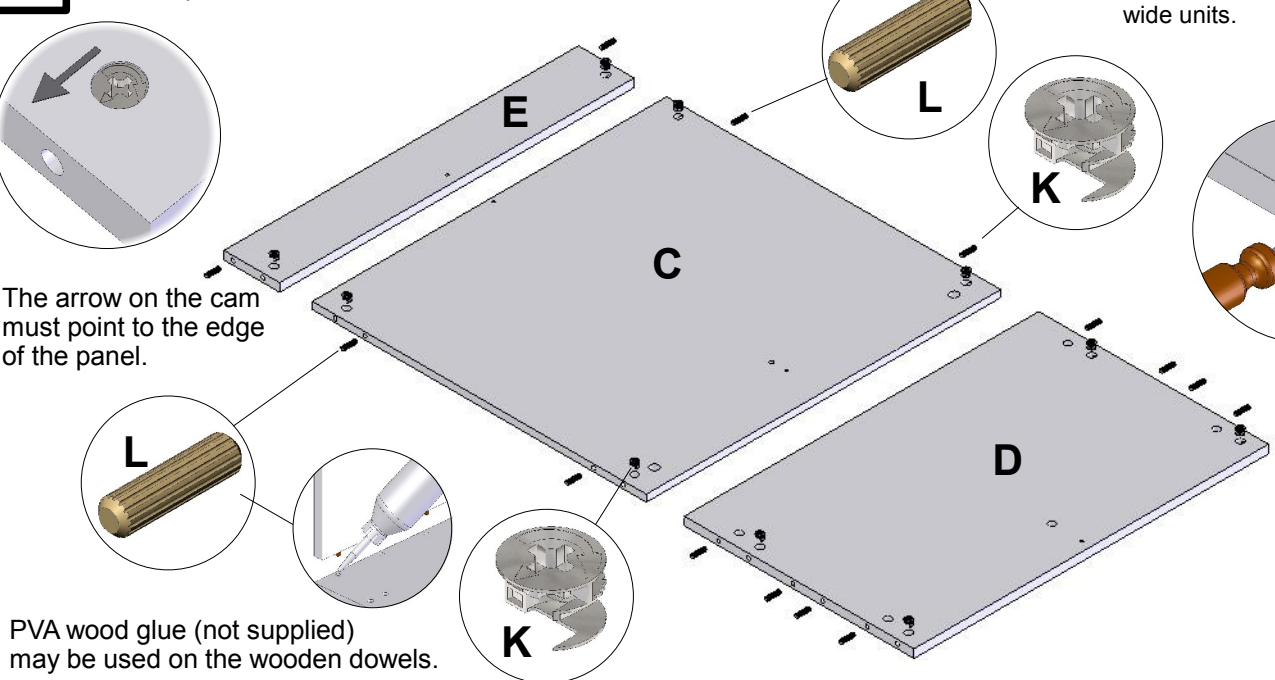
If this unit is a **Drawer line** or **Drawer unit**, it is easier to fit the drawer runners before assembling the unit. Refer to the template packed with the drawer box for more information. Position the first panel so the metal cam studs and wooden dowels line up with the holes and all cams are to the outside of the unit. Use a rubber mallet to tap the panels completely together to avoid damage to the cams and panels. Turn the cams clockwise with a suitable screwdriver. (Do not use an electric screwdriver)



1 Fit the metal cam studs **S** and worktop blocks **W** to the universal end panels **A** and **B**.



2 Insert cams and dowels into holes in back panel **C**, base panel **D** and top rail **E**.

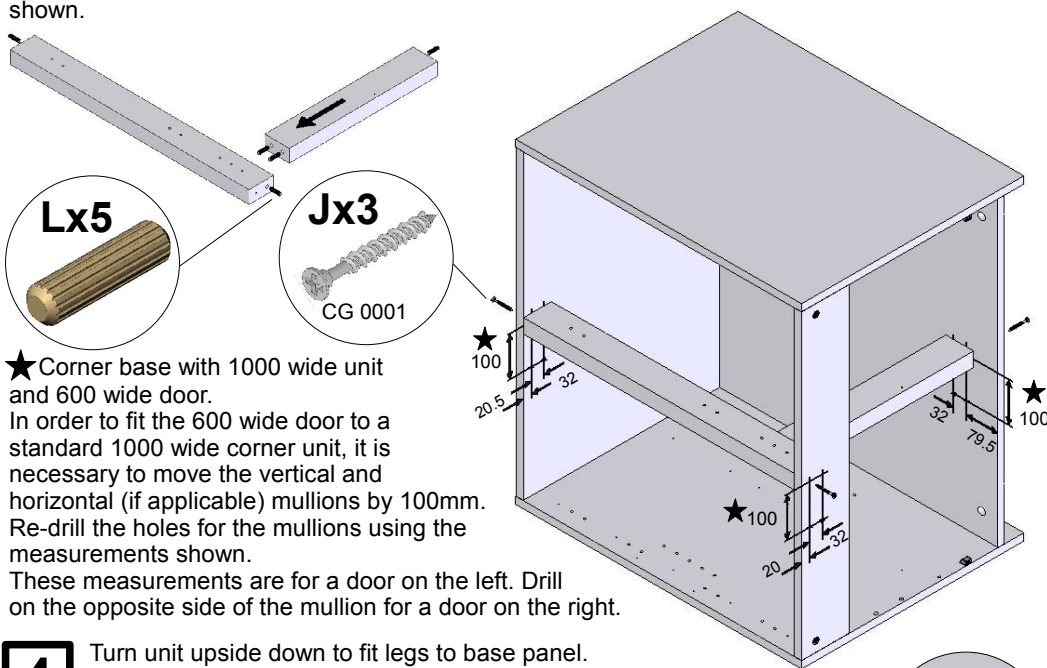


1 rear screw is used to secure the back panel on 800, 900 and 1000 wide units.

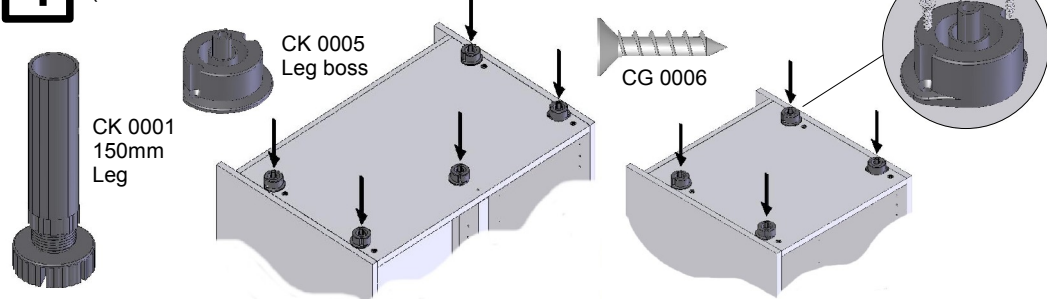
3 Lay end panel **B** on a clean surface (the packaging is ideal). Position base panel **D**, back panel **C** and front rail **E** so the metal cam studs and wooden dowels line up with the holes and all 15mm cams are to the outside of the unit. Position end panel **A** above all panels and use a rubber mallet to tap the panels completely together to avoid damage to the cams and panels. Turn the 15mm cams clockwise with a suitable screwdriver (do not use an electric screwdriver).

800, 900 & 1000 wide units only

On 800, 900 & 1000 wide base units vertical mullions should be added to the unit (If Drawerline also add Horizontal mullion). They are fixed using wooden dowels and 45mm carcass screws as shown.



4 Turn unit upside down to fit legs to base panel. (See notes below.)



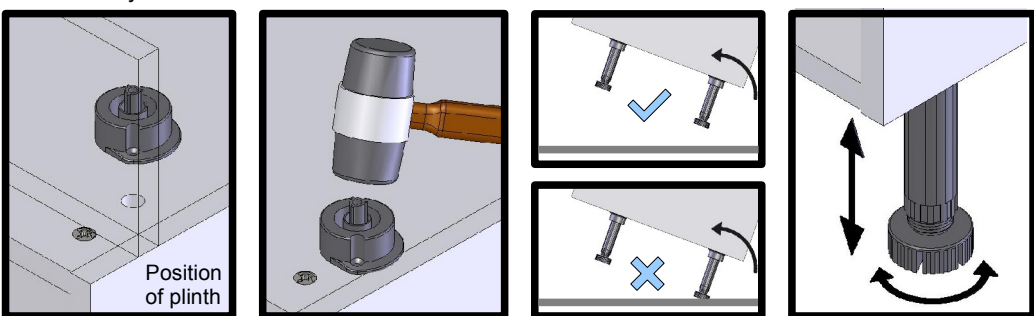
Legs and leg bosses

Fit the leg bosses into the base panel of the unit. Turn the leg boss so the flange extends over the end panels. If the leg boss is at the front of the unit, the flat edge of the flange must be square to the end panel or it will foul the plinth. Tap the centre pin of the leg boss down until it is flush with the panel. (This does not need great force.)

Fix leg boss using 2 x No 6 1/2" screws.

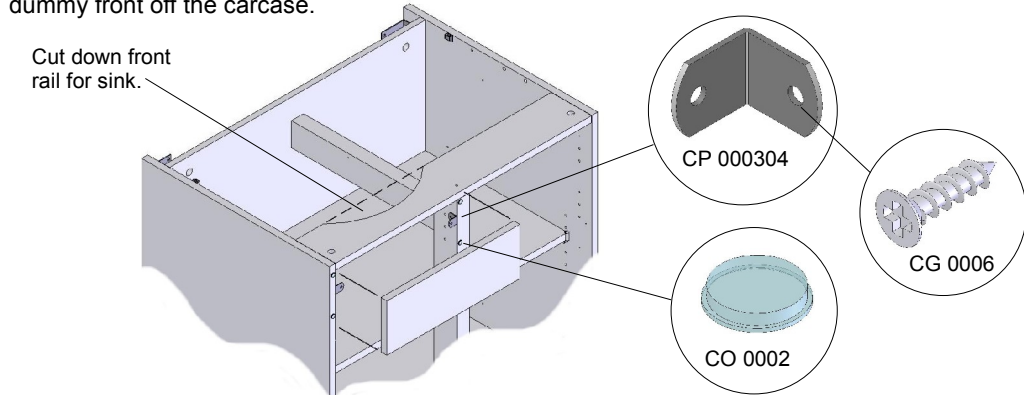
Take care turning the unit over. (We recommend 2 people) Do not allow the full weight of the unit to rest on the legs before the unit is upright.

Push adjustable leg into leg boss. Adjust the height of the unit by turning the bottom of the leg. If necessary a flathead screwdriver can be used in the slots.



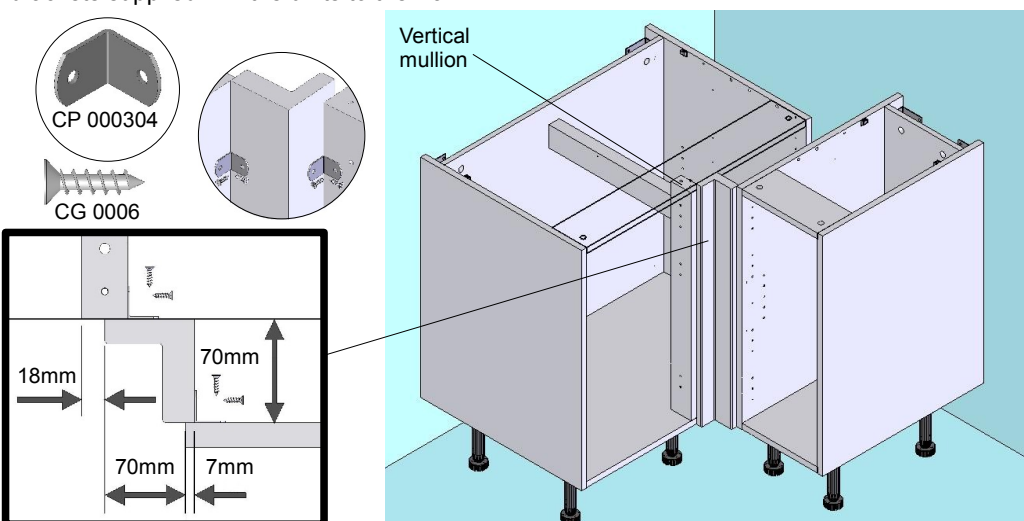
Sink units – dummy drawer fronts

Note: It may be necessary to cut down the front rail to fit a sink onto this unit. Fit the dummy drawer fronts after the doors have been fitted. Align with the other doors and drawer fronts. Fit dummy fronts using L-brackets and screws as shown and use door buffers to space the dummy front off the carcass.



Base corner post connection

When fitting a corner base position the units into the corner so that the corner post fits to the vertical mullion as shown in the detail. Fix the adjacent units to the corner post with the brackets supplied. Fix the units to the wall.



Installation, Worktop and Plinth

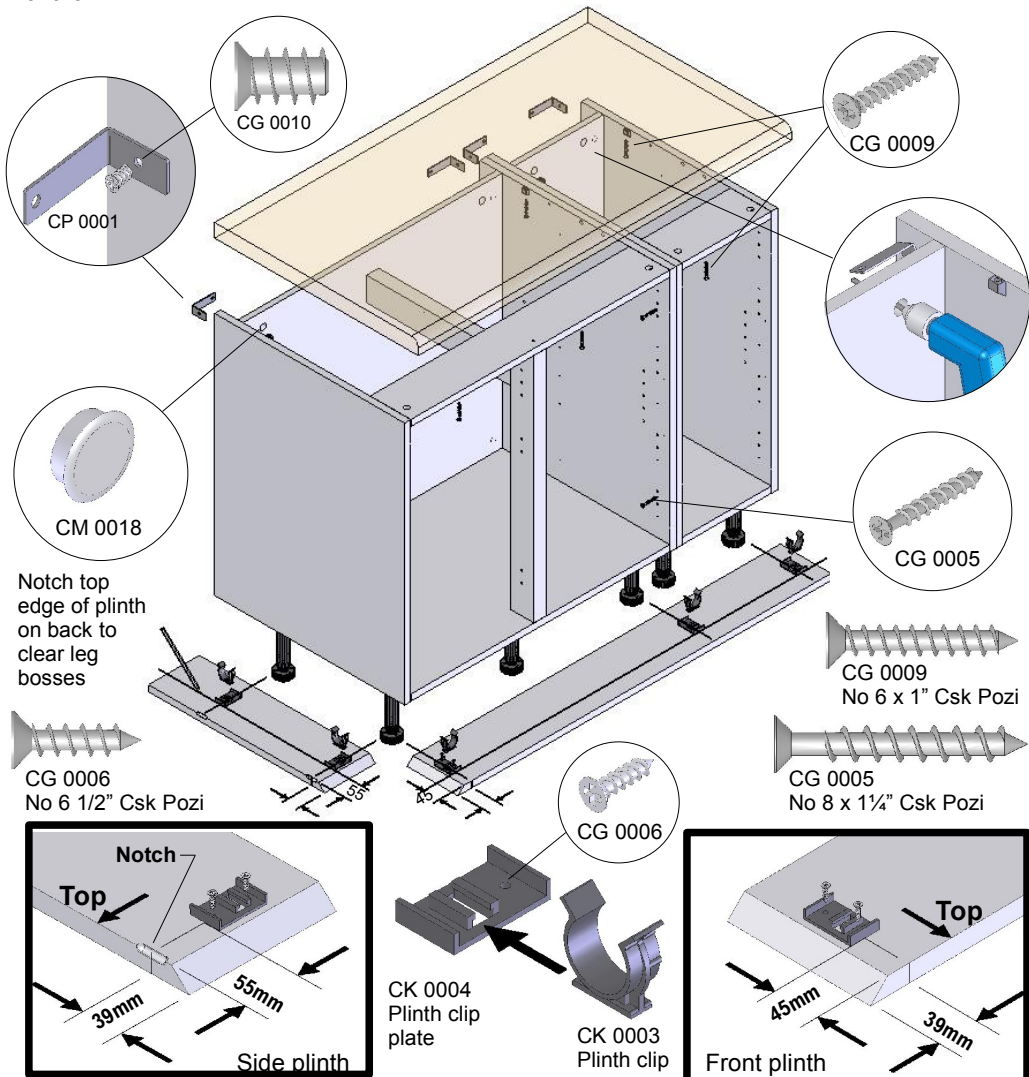
Fit the metal L brackets to the rear of each unit with Euro screws as shown. Position and level the units. Clamp the units together and fix with No 8 x 1 1/4" screws. Try to locate the holes for the screws behind the hinge plates, drawer runners etc. so they will be hidden.

Turn the L shaped brackets out of the way. Drill and plug the wall through the access hole and screw the unit to the wall. Plug access hole with cap provided.

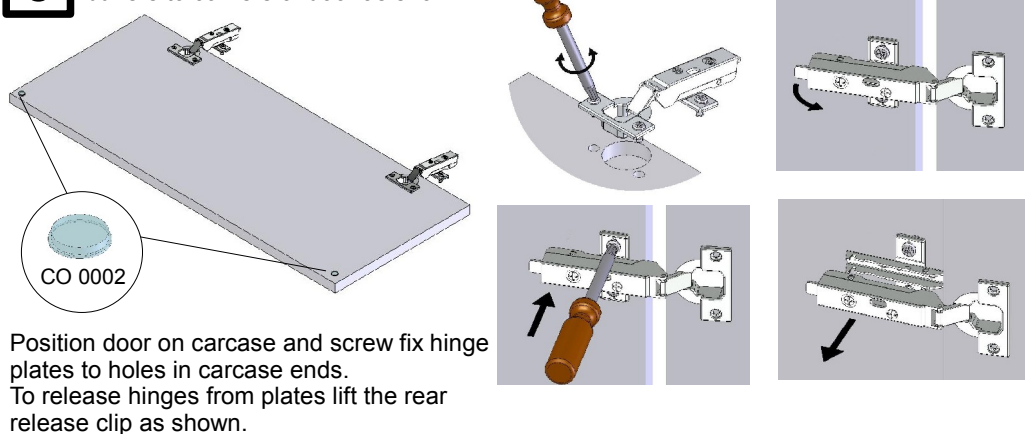
Fit the plinth return first and scribe to the wall. Mitre the joint with the front plinth and notch the top edge on the back to clear the leg bosses.

Lay the plinth on the floor against the legs and mark the centre of the legs onto the plinth. In a run of units, use only 1 plinth clip on adjacent legs.

Fix the worktop to the units with No 6 x 1" csk screws through the rear worktop blocks and the front rail.



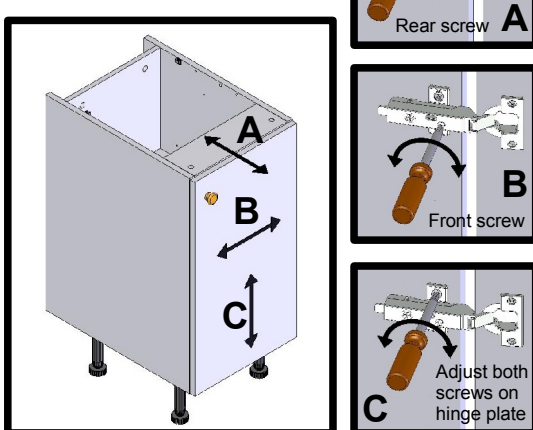
5 Screw fix hinges to each door and fit door buffers to corners of door as shown.



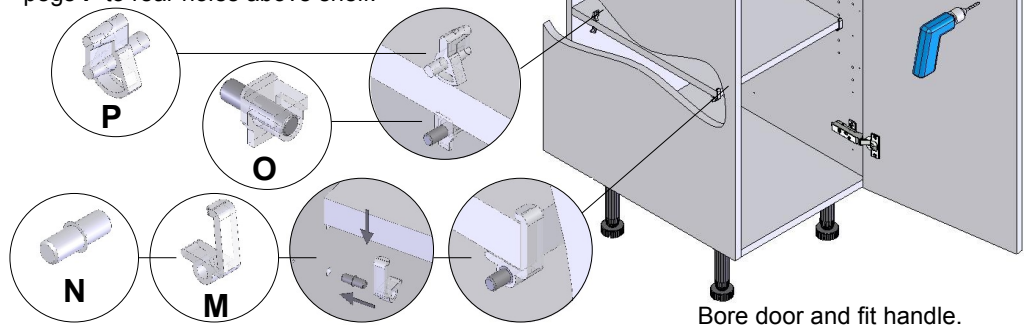
Position door on carcass and screw fix hinge plates to holes in carcass ends. To release hinges from plates lift the rear release clip as shown.

Hinge adjustment

By turning the hinge adjuster screws as shown the doors can be adjusted in various directions.



6 If a shelf is being fitted position 2 shelf pegs L to shelf holes at rear of unit. Fit front retaining pegs M / N to front shelf holes (as shown). Finally fit two top retaining pegs P to rear holes above shelf.



Bore door and fit handle.