

930 x 930 'L' CURVED CORNER BASE ASSEMBLY INSTRUCTIONS

CT35 RTA only 11.8.16

Fitting identification list

x 4
CG 005 – No 8 x 1¼" Csk Pozi

x 2
CG 0010 – 14mm Euro screw

M x 6
CG 0001 – 45mm Carcase screw

J x 2
CB 0014
Clip hinge
mounting
plate

L x 22
CF 0006 – Wooden dowel 30 x 8mm

x 20
CG 0006 – No 6 x ½" Csk Pozi

S x 12
CF 0012 – Metal cam stud

x 2
CA 0095
160 deg
clip hinge

W x 2
CAN 0010
Grey worktop
block

x 2
CP 0001
Metal L bracket

K x 12
CF 0011
15mm Cam

L x 4
CL 0002
Shelf peg

P x 2
CL 0009
Shelf peg

M x 2
CL 0003
Shelf peg

N x 2
CL 0004
Shelf peg

x 3
CK 0003
Plinth clip

x 3
CK 0004
Plinth clip
plate

x 6
CK 0005
Leg boss

x 6
CK 0001
150mm Leg

5mm Cover
Cap

8mm Cover
Cap

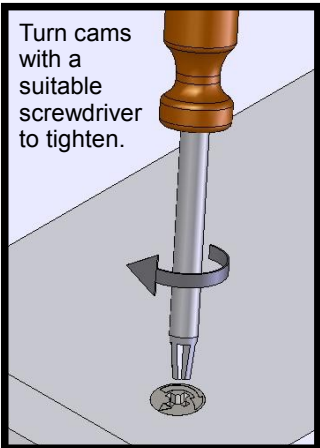
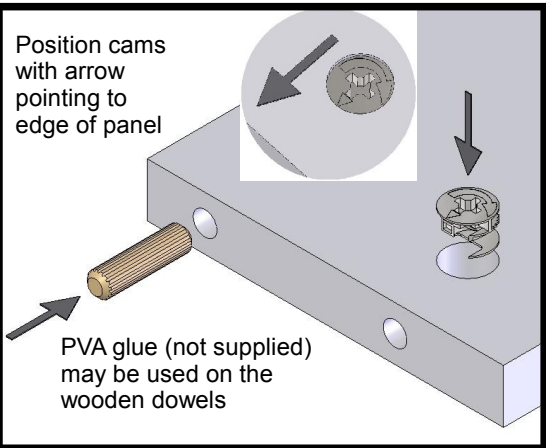
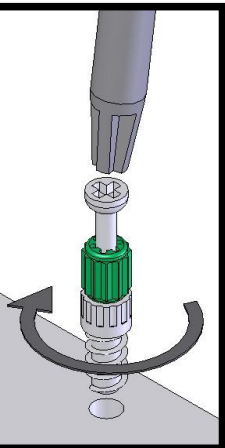
x 2
CM 0018
18mm Cover
Cap

x 1
C
Contact fitting

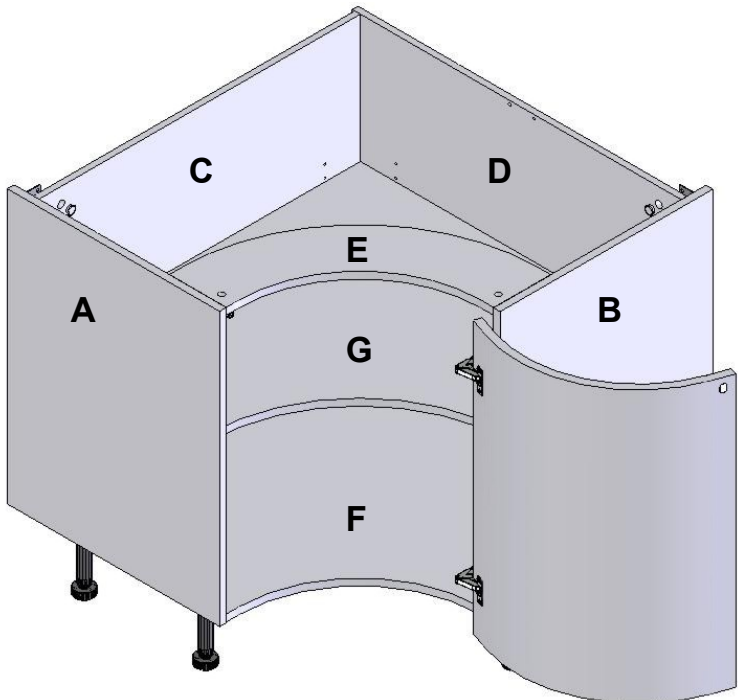
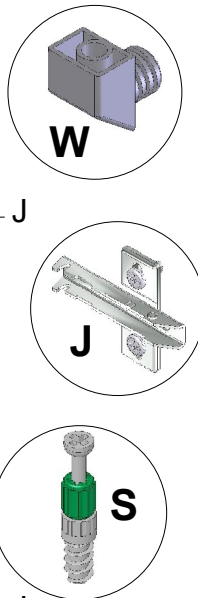
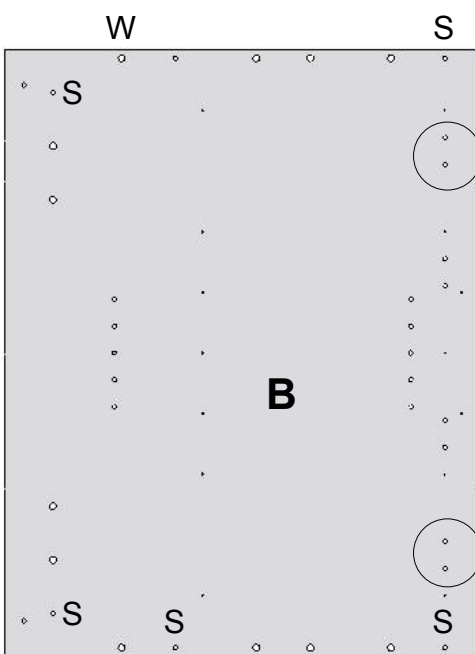
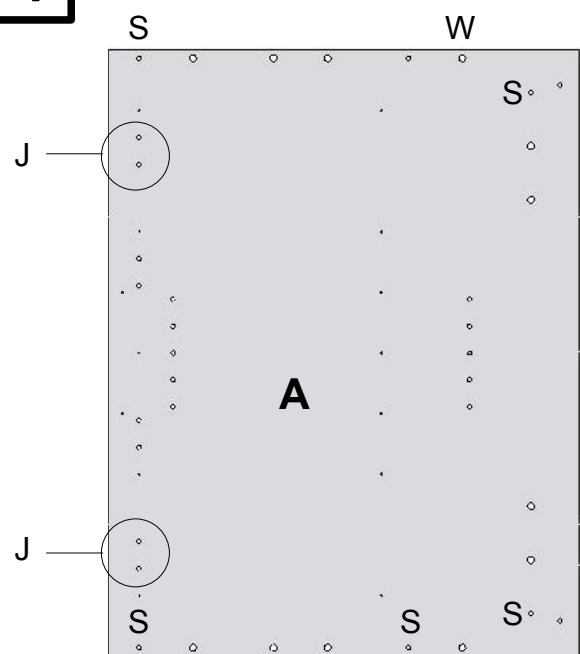
Catch plates

Cam & Metal Cam Stud

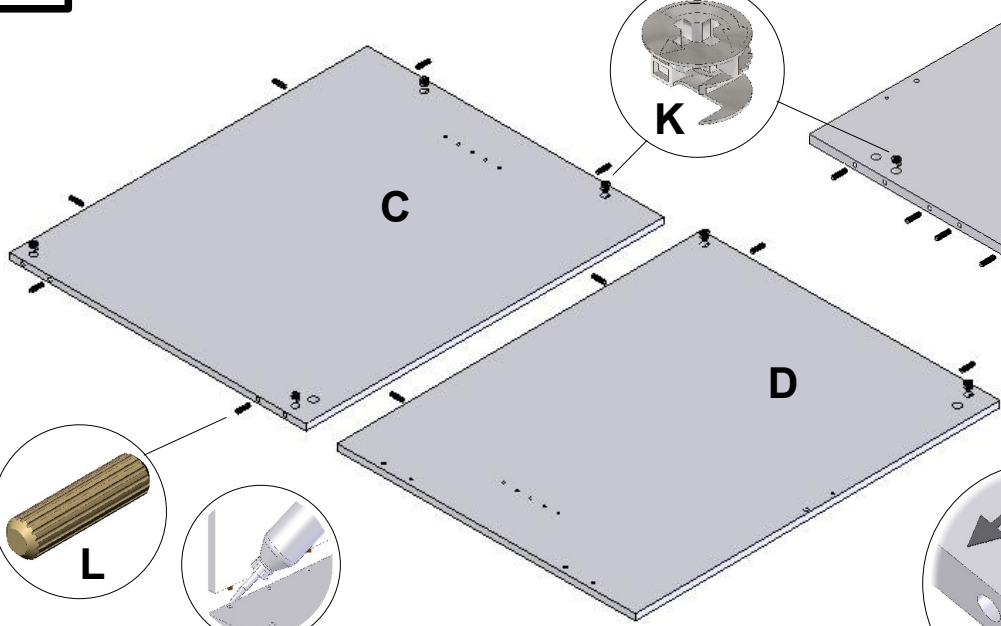
Position the first panel so the metal cam studs and wooden dowels line up with the holes and all cams are to the outside of the unit.
Use a rubber mallet to tap the panels completely together to avoid damage to the cams and panels.
Turn the cams clockwise with a suitable screwdriver. (Do not use an electric screwdriver)



1 Fit the metal cam studs **S** and worktop blocks **W** to the universal end panels **A** and **B**.
Screw fix 2 hinge plates **J** to either the left or right hand end in positions shown.



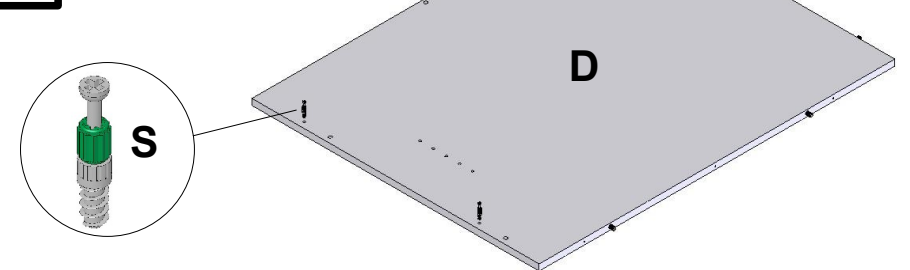
2 Insert cam **S** and dowels **L** into holes in back panels **C** and **D**,
base panel **G** and top rail **E**.



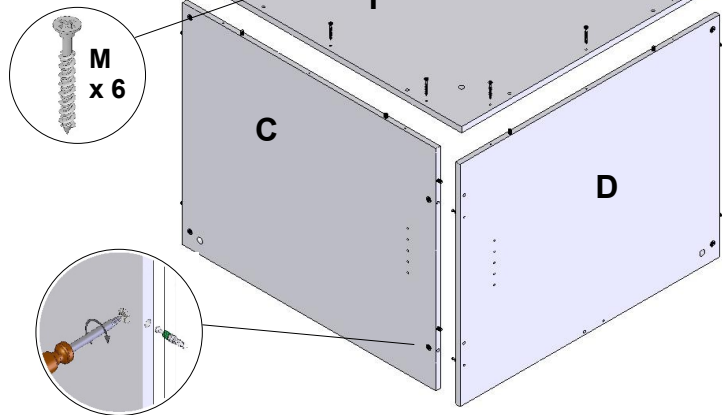
PVA wood glue (not supplied)
may be used on the wooden dowels.

The arrow on the cam
must point to the edge
of the panel.

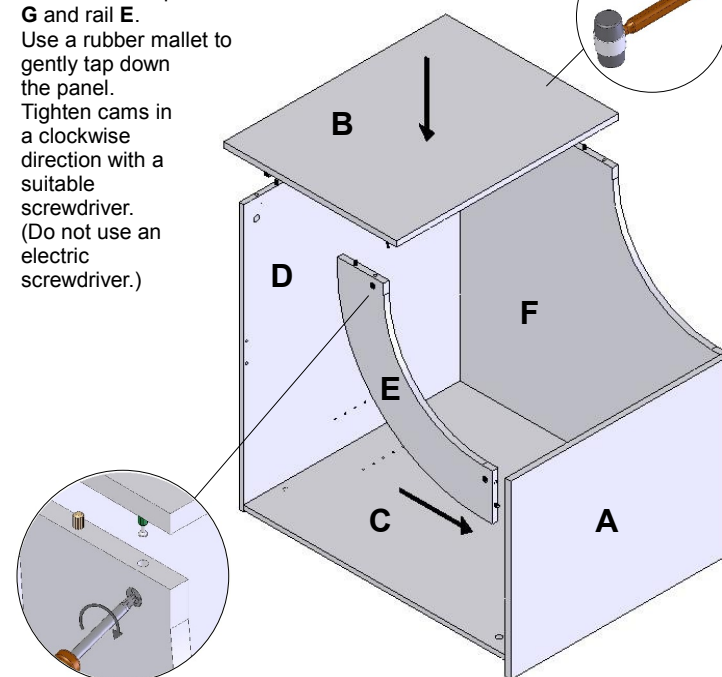
3 Turn back panel **D** over and fit 2
Cam studs **S** to inner face.



- 4** Fix back panels **C** and **D** together using cam fittings **K** and cam studs **S**. (ensuring that cam fittings are to the outside)
Tighten cams in a clockwise direction with a suitable screwdriver.
(Do not use an electric screwdriver.)
Position base panel **G** onto back panels **C** and **D**, using wooden dowels on backs to locate its position.
Fix base in position using 6 x 45mm carcass screws **M**.

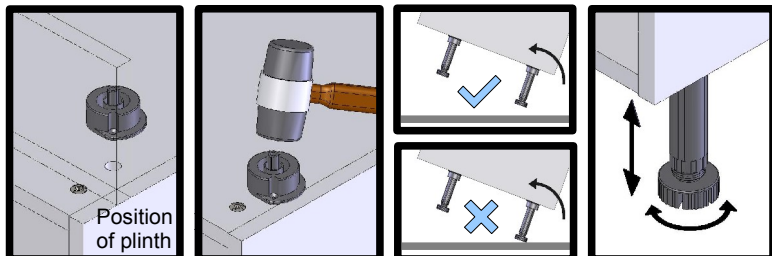


- 6** Turn unit so that left hand back panel **C** is on the floor.
Fix top rail **E** to end panel **A** and tighten.
Fix end panel **B** to back **D**, bottom

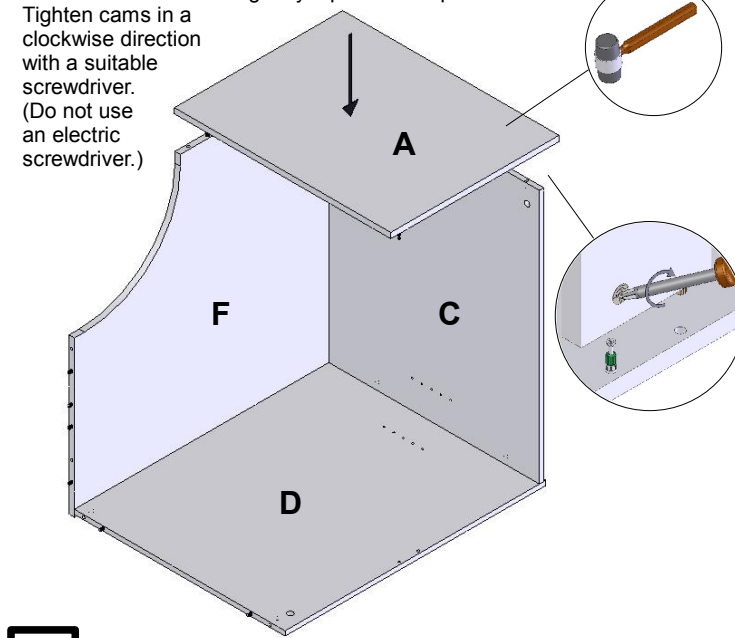


Legs and leg bosses

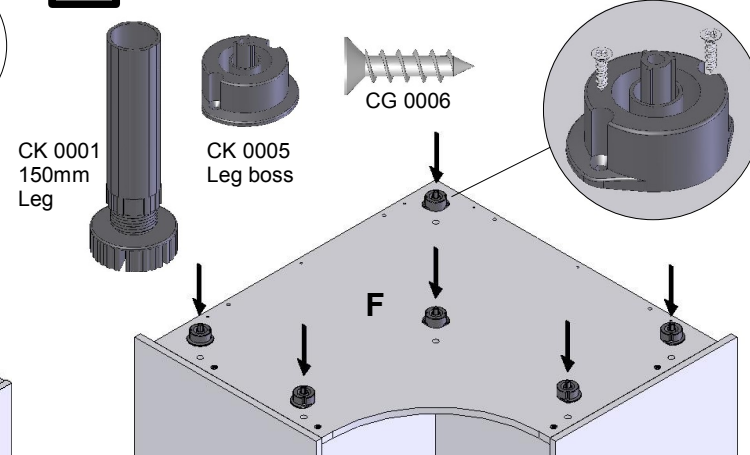
Fit the leg bosses into the base panel of the unit. Turn the leg boss so the flange extends over the end panels. If the leg boss is at the front of the unit, the flat edge of the flange must be square to the end panel or it will foul the plinth. Tap the centre pin of the leg boss down until it is flush with the panel. (This does not need great force.)
Fix leg boss using 2 x No 6 1/2" screws.
Take care turning the unit over. (We recommend 2 people) Do not allow the full weight of the unit to rest on the legs before the unit is upright.
Push adjustable leg into leg boss. Adjust the height of the unit by turning the bottom of the leg. If necessary a flathead screwdriver can be used in the slots.



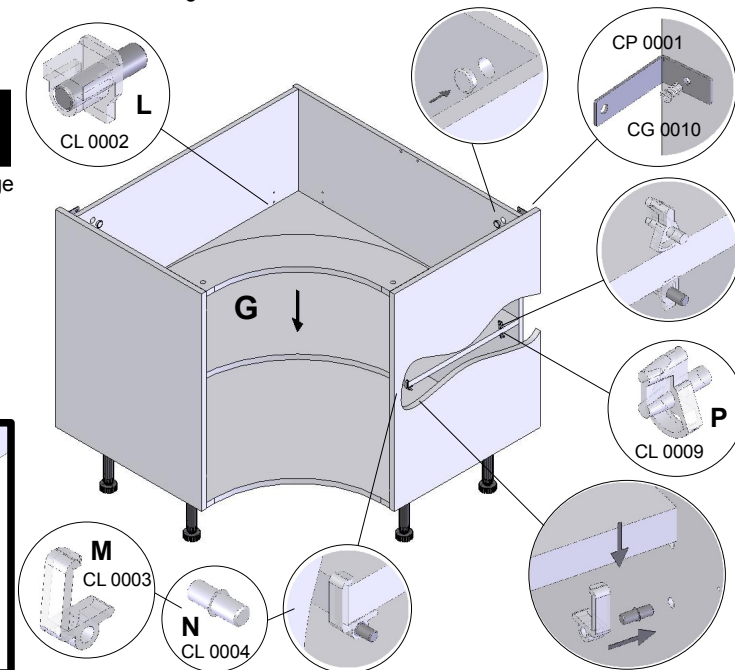
- 5** Turn unit so that right hand back panel **D** is on the floor.
Fix end panel **A** to back **C** and bottom **G**.
Use a rubber to gently tap down the panel.



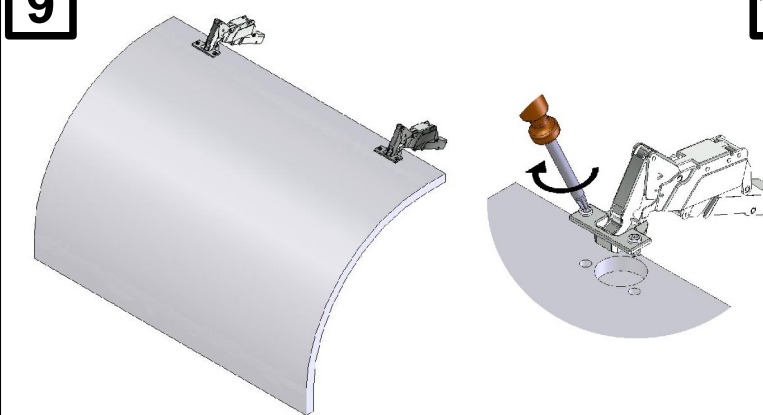
- 7** Turn unit upside down to fit legs to panel **F**. (See notes below.)



- 8** Fit metal 'L' brackets to back of unit using 2 x 14mm Euro screws.
Cap access holes in back panel using 18mm cover caps.
If a shelf is being fitted, position 4 shelf pegs **L** to shelf holes in back panels and rear holes in end panels. Drop shelf **H** into position, then fit 2 front retaining pegs **M** / **N** to front holes in ends, (as shown). Finally fit two top retaining pegs **P** to rear holes above shelf on end panels. (Note the shelf should be fitted before worktops are fitted above the unit.)
If a carousel fitting is to be used, discard the shelf and fit the wire work.

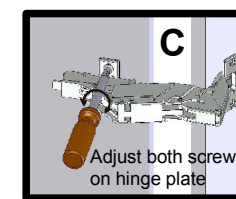
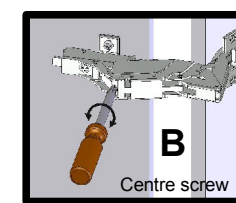
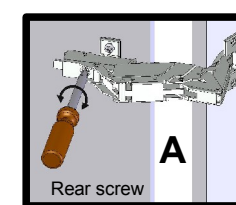
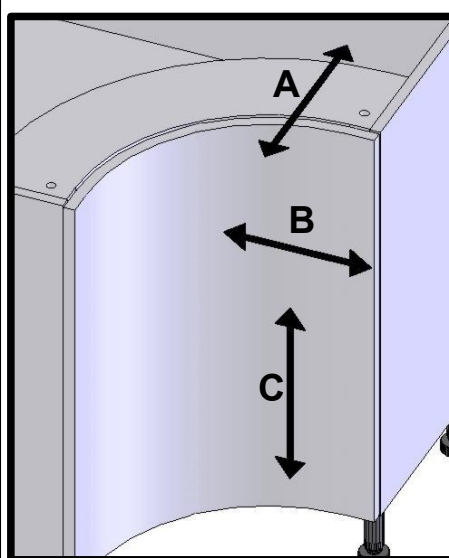


- 9** Screw fix hinges to door as shown.

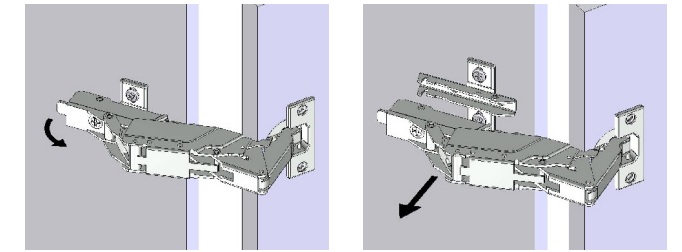


Hinge adjustment

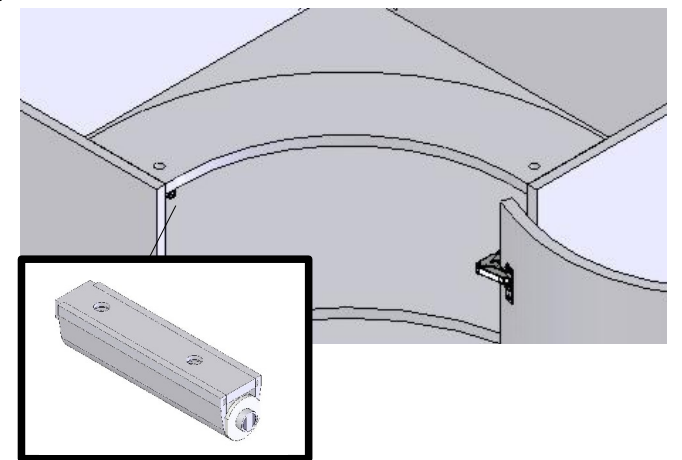
By turning the hinge adjuster screws as shown the doors can be adjusted in various directions.



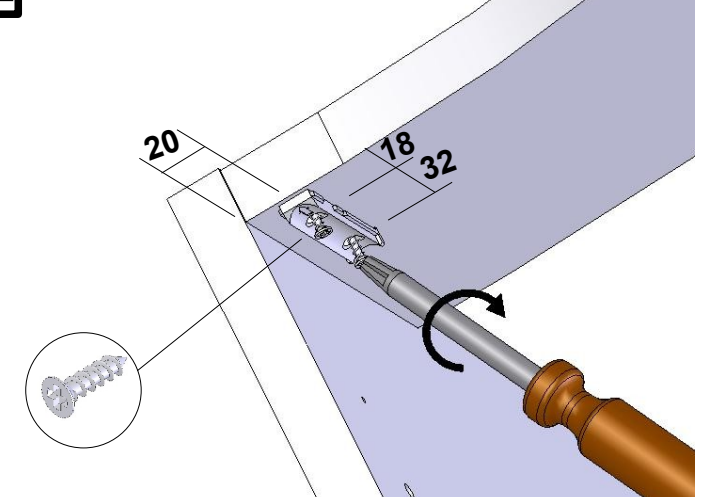
- 10** Clip hinges onto hinge plates.
To release hinges from plates, lift the rear release clip as shown.



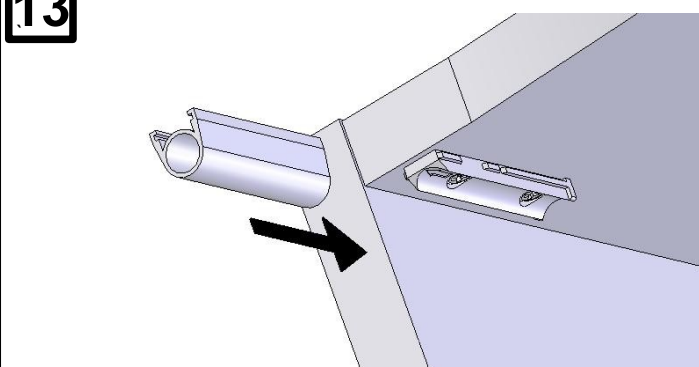
- 11** Fit contact fitting to underside of front rail as shown.
Note: The catch should be fitted after unit door has been fitted and fully adjusted.



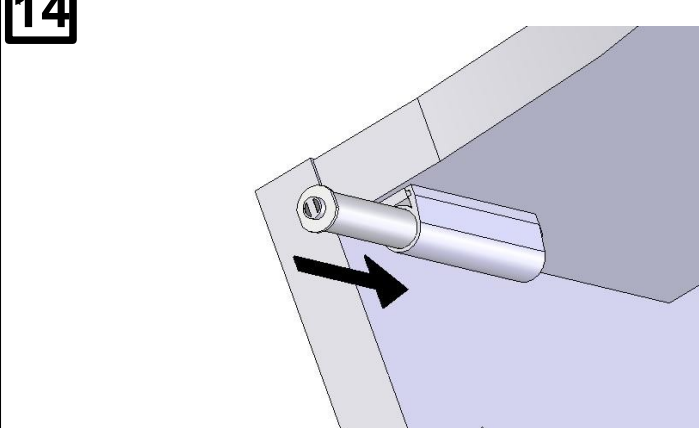
- 12** Screw fix contact fitting plate to underside of top rail in position shown using two screws provided.



- 13** Slide barrel support into place over fitting plate.



- 14** Insert magnetic piston .



- 15** After fully adjusting the door, line-up contact fitting plate with contact piston before screw fixing to back of door.

