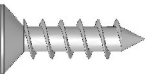


OAK DRAWER BOX ASSEMBLY

Components



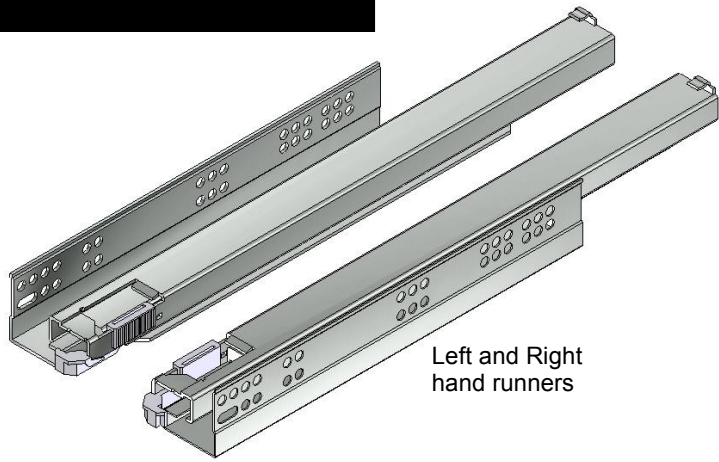
CG 0031 – No 8 x 5/8" Csk Pozi



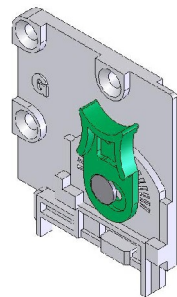
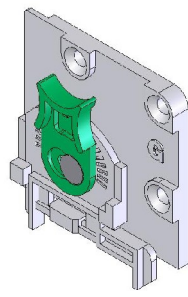
CG 0006 – No 6 x 1/2" Csk Pozi



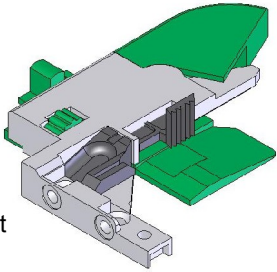
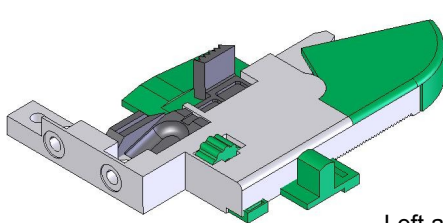
CG 0009 – No 6 x 1" Csk Pozi



Left and Right hand runners

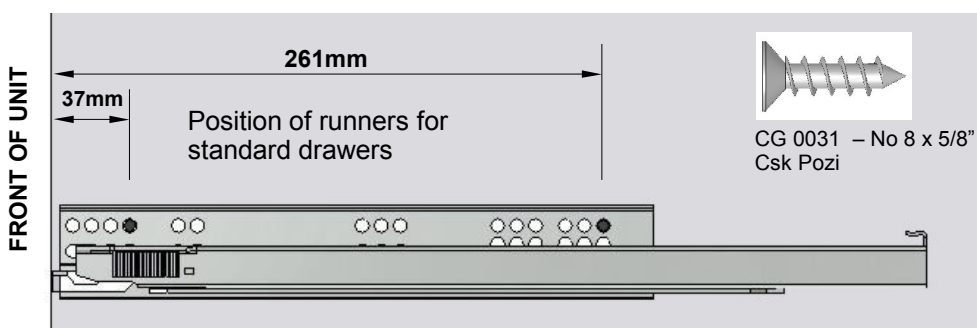
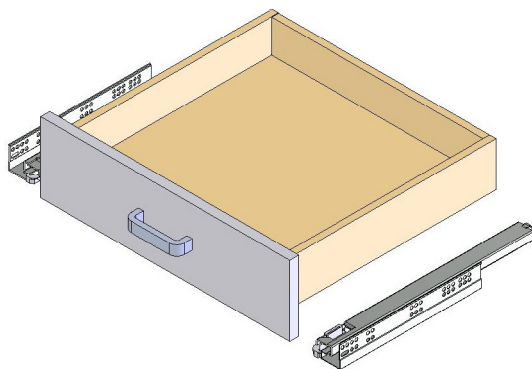
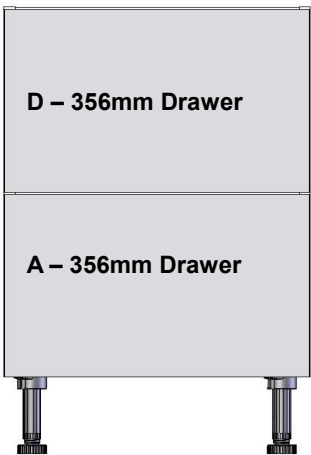
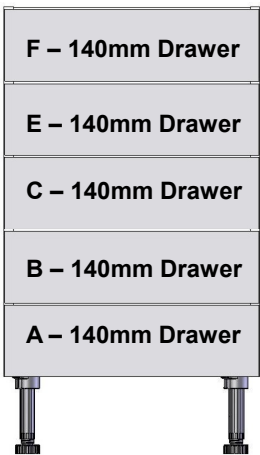
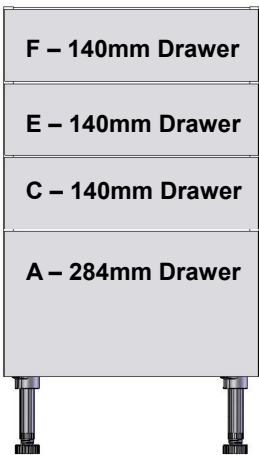
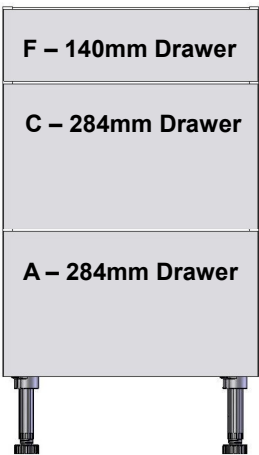
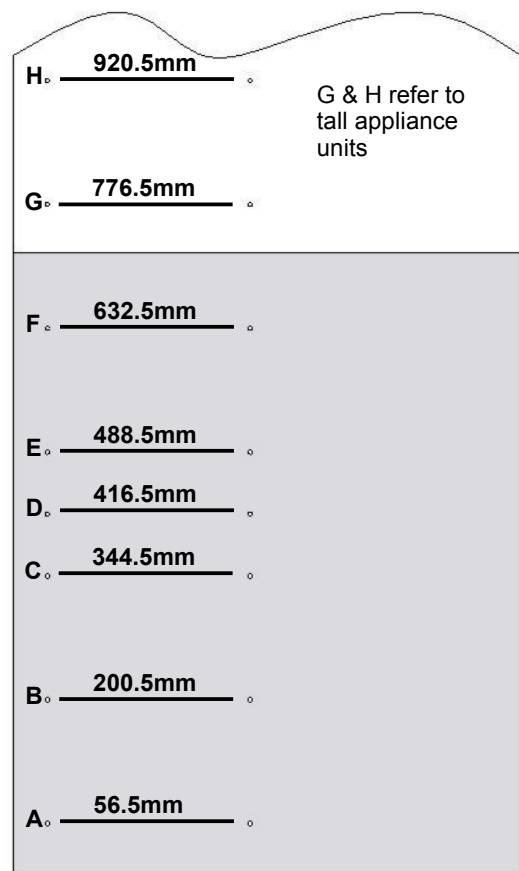


Left and Right hand rear adjustment adapters



Left and Right hand front brackets

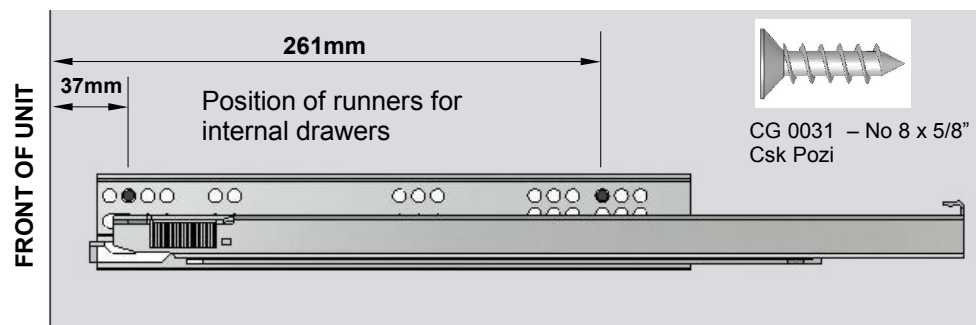
Runner positions standard drawers



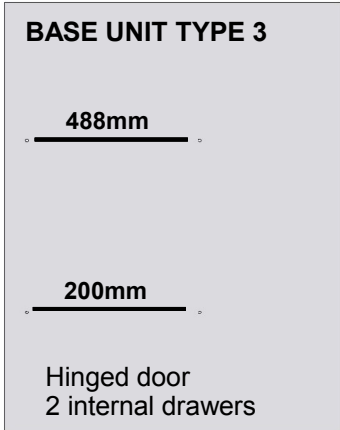
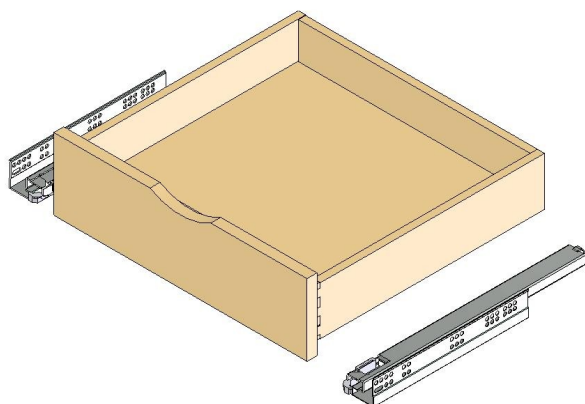
Screw fix runners in positions shown using screws shown.

These illustrations show the drawer configurations for the base units. The letter codes (A, B, C etc.) refer to the measurements on the drawing of a base end panel on the left. The measurements for the drawer runner positions on the appliance housings and mid height units are the same as shown on the drawing of the base end panel. The end panel should be drilled using a 3mm dia pilot drill in the positions as shown to fit appropriate drawer runners.

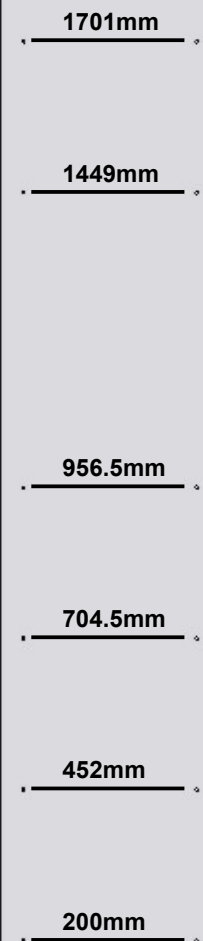
Runner positions internal drawers



Screw fix runners in positions shown using screws shown.



LARGER UNIT TYPE 3



LARGER UNIT TYPE 4



These illustrations show the runner height positions for internal drawers on base and tall unit end panels. The end panels should be drilled using a 3mm dia pilot drill in the positions as shown to fit appropriate drawer runners.

