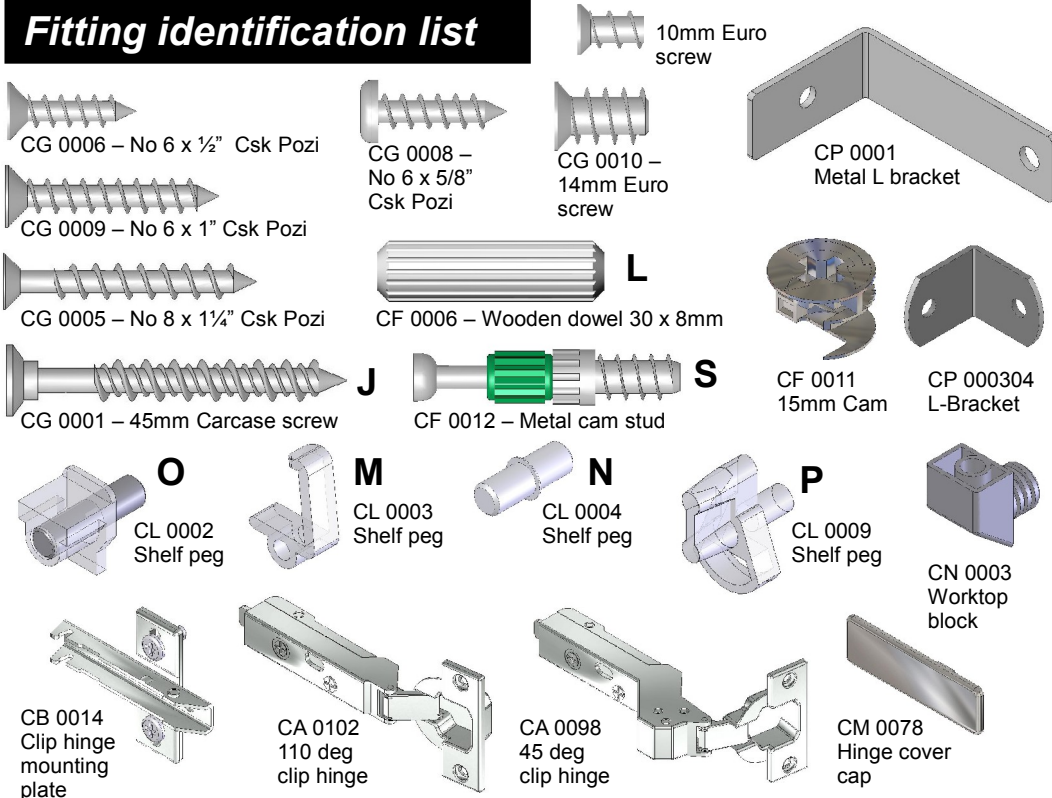


SPECIAL BASE UNIT ASSEMBLY INSTRUCTIONS

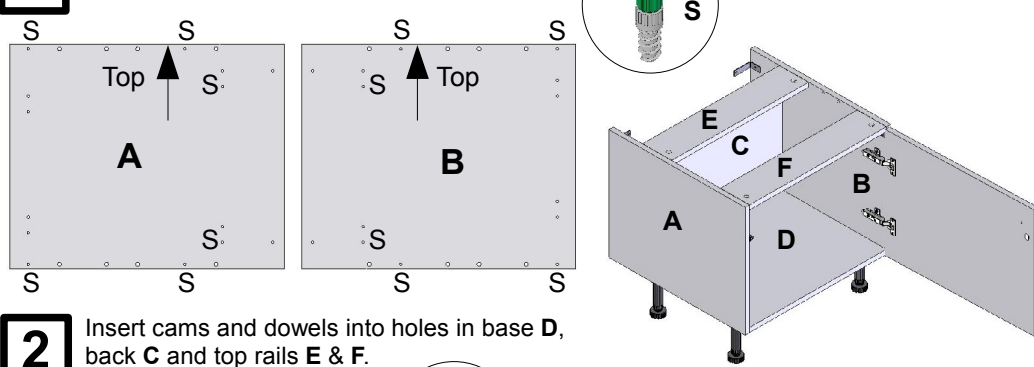
CT20 9.9.16

Fitting identification list

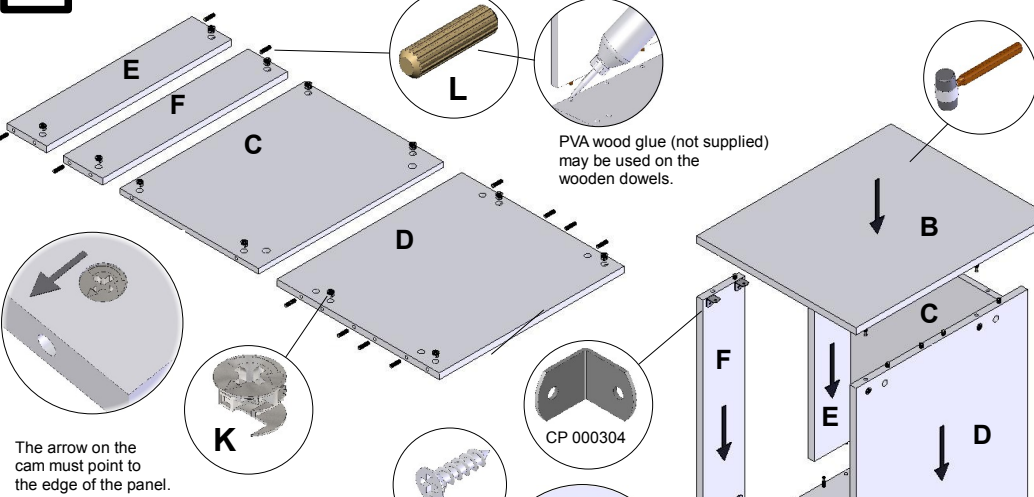


Belfast sink unit

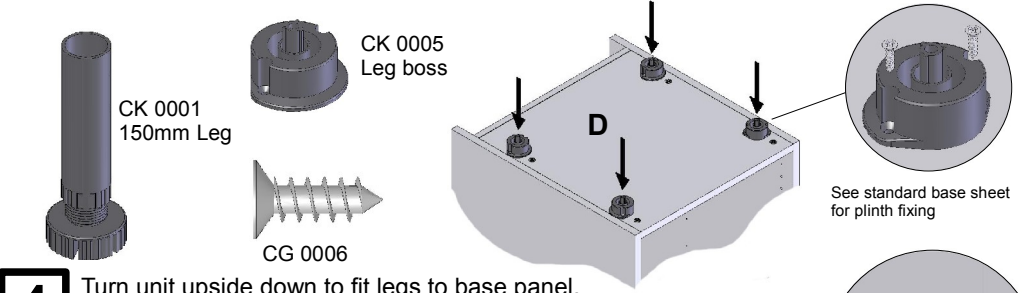
- 1** Fit the metal cam studs **S** and worktop blocks **W** to end panels **A** and **B**.



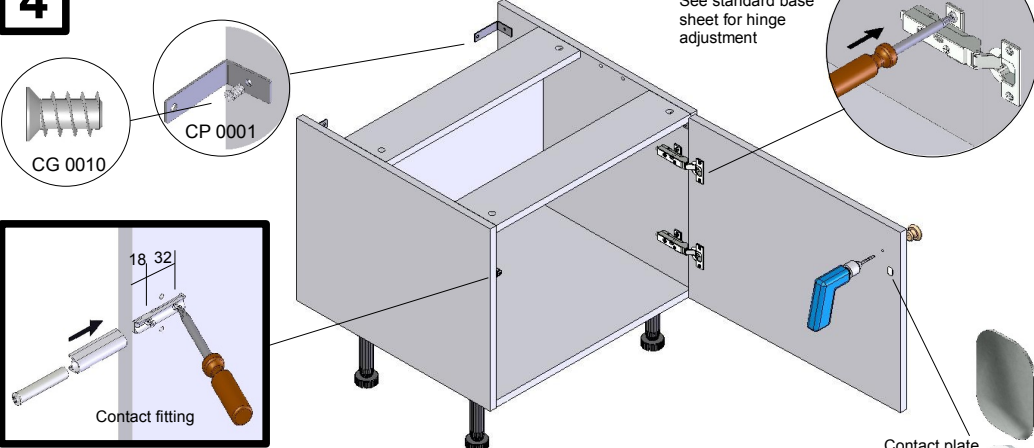
- 2** Insert cams and dowels into holes in base **D**, back **C** and top rails **E** & **F**.



- 3** Lay end panel **A** on a clean surface (the packaging is ideal). Position base panel **D**, back panel **C** and front rails **E** & **F** so the metal cam studs and wooden dowels line up with the holes and all 15mm cams are to the outside of the unit. Position end panel **B** above all panels and use a rubber mallet to tap the panels completely together to avoid damage to the cams and panels. Turn the 15mm cams clockwise with a suitable screwdriver (do not use an electric screwdriver).



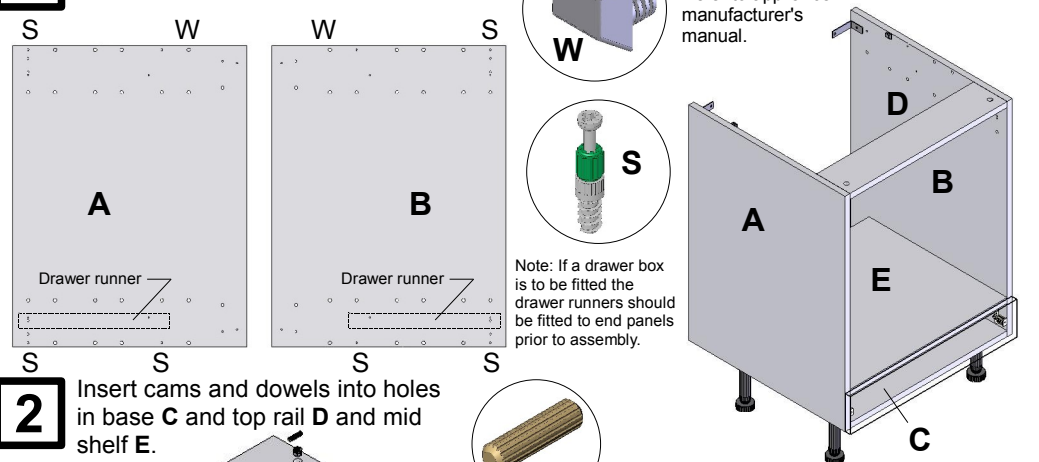
- 4** Turn unit upside down to fit legs to base panel.



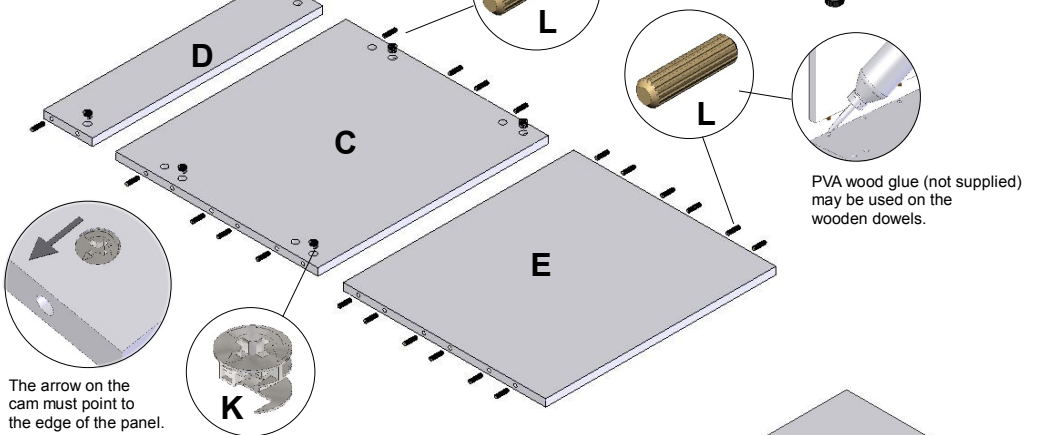
- 5** Fit rear metal brackets using Euro screws provided. Hang door by screw fixing hinge plates, drill door for handle. Fit contact fitting opposite hinges as shown and fit contact plate to back of door.

Built under oven housing

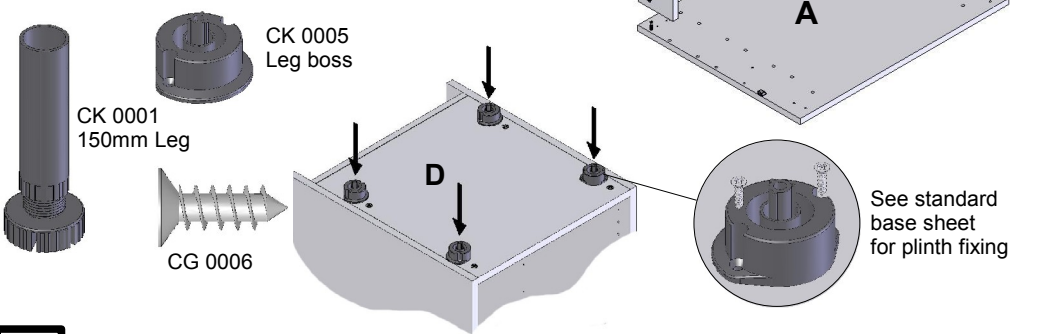
- 1** Fit the metal cam studs **S** and worktop blocks **W** to end panels **A** and **B**.



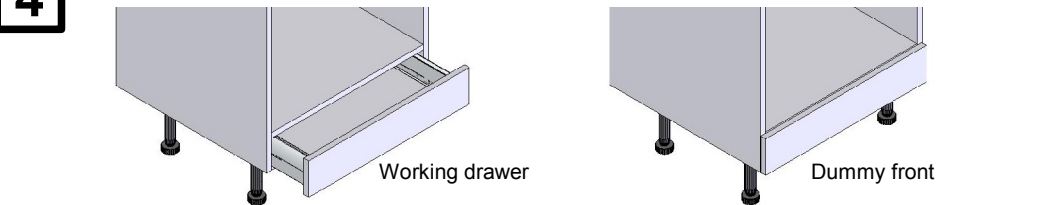
- 2** Insert cams and dowels into holes in base **C** and top rail **D** and mid shelf **E**.



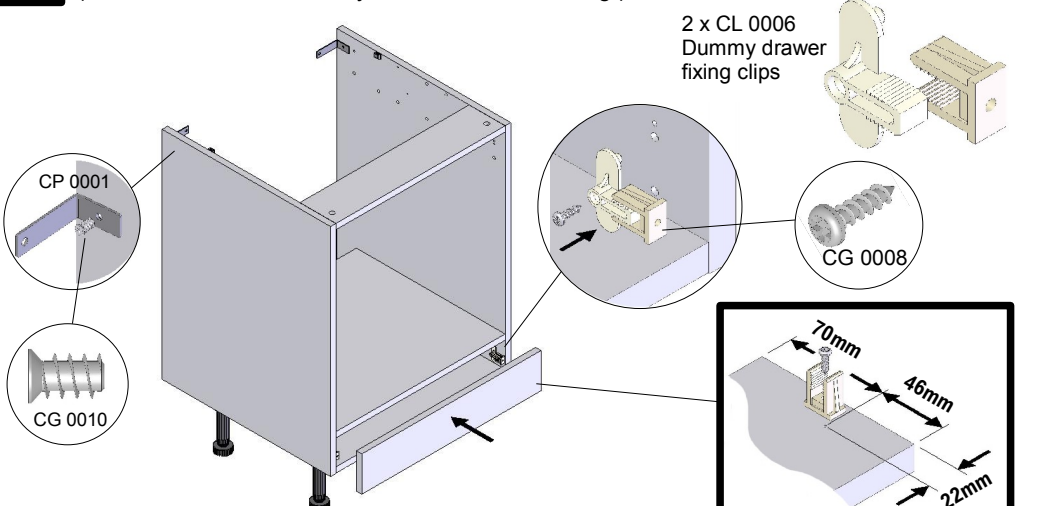
- 3** Lay end panel **A** on a clean surface (the packaging is ideal). Position base panel **C**, front rail **D** and support shelf **E** so that all metal cam studs and wooden dowels line up with the holes and all 15mm cams are to the outside of the unit. Position end panel **B** above. Use a rubber mallet to tap the panels completely together to avoid damage to the cams and panels. Turn the 15mm cams clockwise with a suitable screwdriver. (do not use an electric screwdriver)



- 4** Turn unit upside down to fit legs to base panel.



- 5** Unit can be fitted with a working drawer or dummy drawer front on clips. (See drawer box assembly sheet for drawer fixing.)

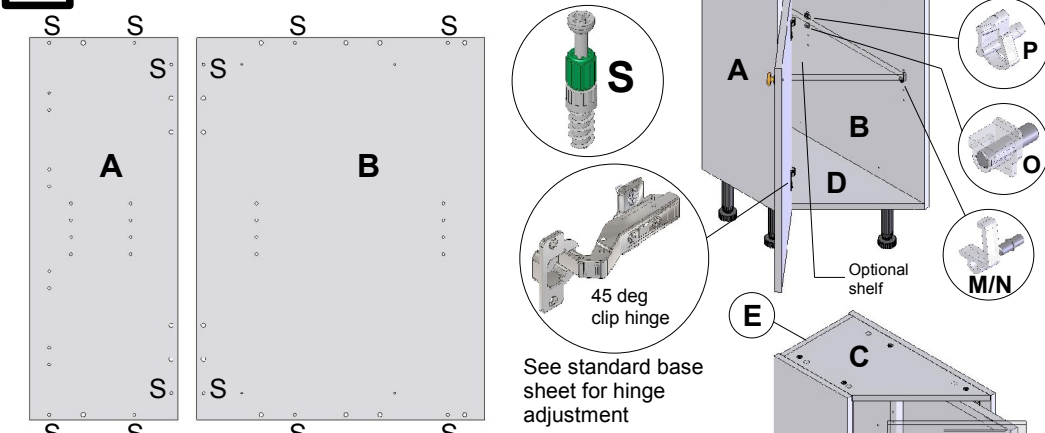


- 6** When fitting dummy drawer front to carcase assembly using dummy drawer fixing clips. Secure both halves of clip using 4 x No 6 x 5/8" Pan head Pozi screws as shown. Fit rear metal brackets unit using Euro screws provided.

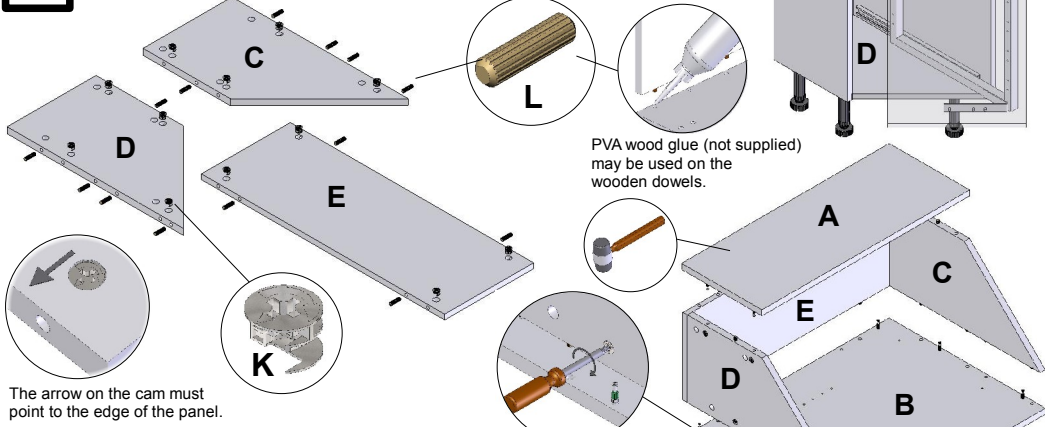
Breakfront units

Breakfront units can be fitted with a hinged door with 45 degree hinges, or pull-out wire baskets with a 45 degree frame and runners.

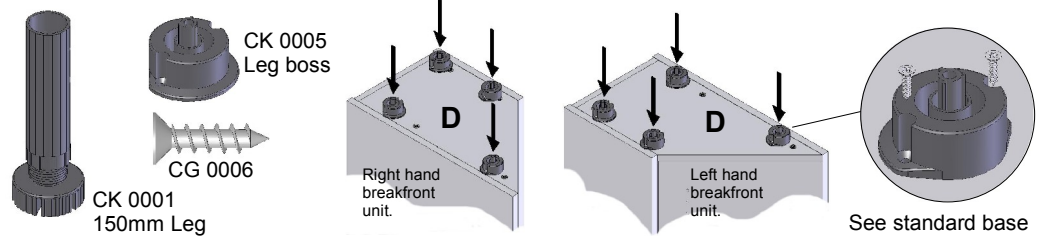
- 1** Fit the metal cam studs **S** to end panels **A** and **B**. (Left hand unit shown, right hand unit opposite.)



- 2** Insert cams and dowels into holes in base panels **C** and **D** and back panel **E**.



- 3** Lay end panel **B** on a clean surface (the packaging is ideal). Position top panel **C**, base panel **D** and back panel **E** so the metal cam studs and wooden dowels line up with the holes and all 15mm cams are to the outside of the unit. Position end panel **A** above all panels and use a rubber mallet to tap the panels completely together to avoid damage to the cams and panels. Turn the cams clockwise with a suitable screwdriver (do not use an electric screwdriver).

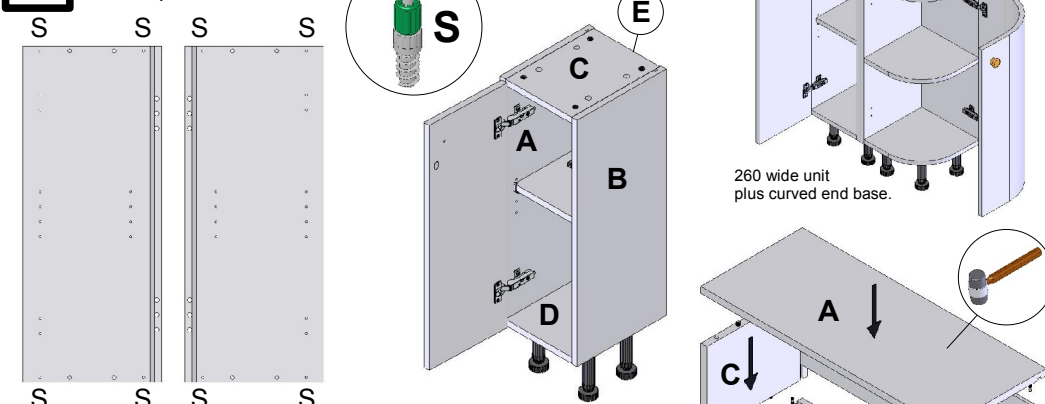


- 4** Turn unit upside down and fit legs to base panel. Stand unit upright and fit shelf / door or pull-out door with wire work as shown above. (Note: fitting instructions for pull-out wire work are included in the pack.)

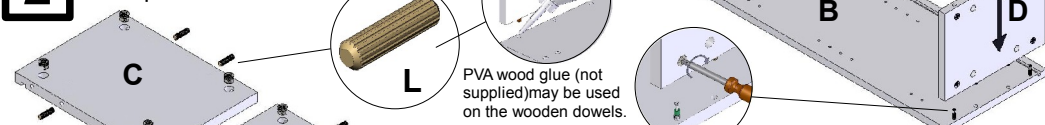
260 wide base unit

260 wide base units can be used on their own or can be attached to curved end base units to create a 560 deep end unit.

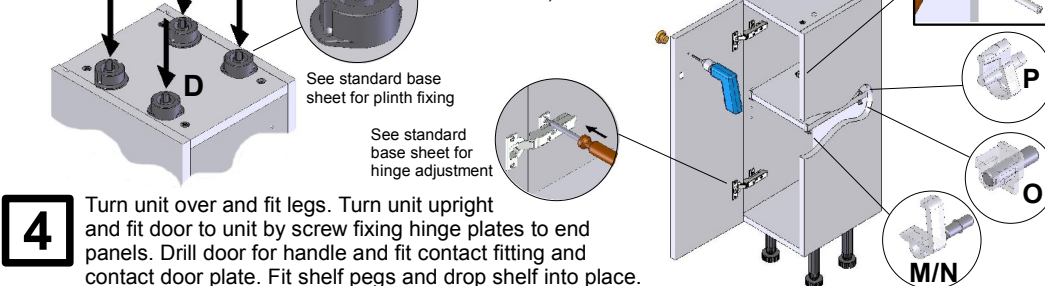
- 1** Fit the metal cam studs **S** to end panels **A** and **B**.



- 2** Insert cams and dowels into holes in base panels **C** and **D**.



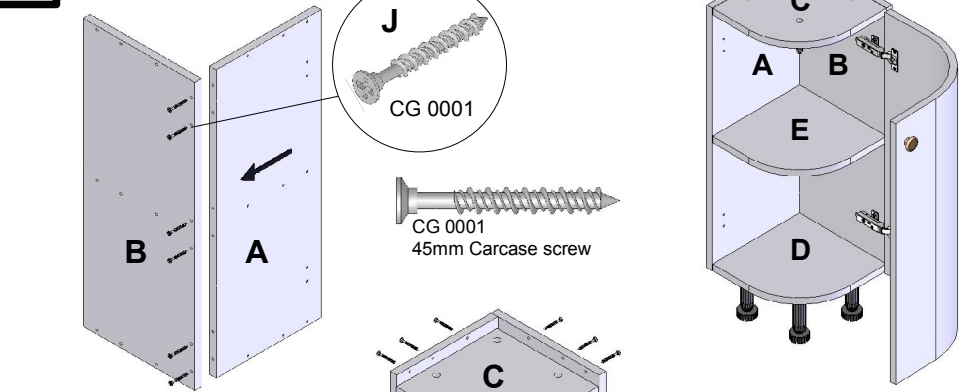
- 3** Lay end panel **B** on a clean surface (the packaging is ideal). Position top panel **C** and base panel **D** so the metal cam studs and wooden dowels line up with the holes and all 15mm cams are to the outside of the unit. Slide back panel **E** into place in grooves. Position end panel **A** above all panels and use a rubber mallet to tap the panels completely together to avoid damage to the cams and panels. Turn the cams clockwise with a suitable screwdriver (do not use an electric screwdriver).



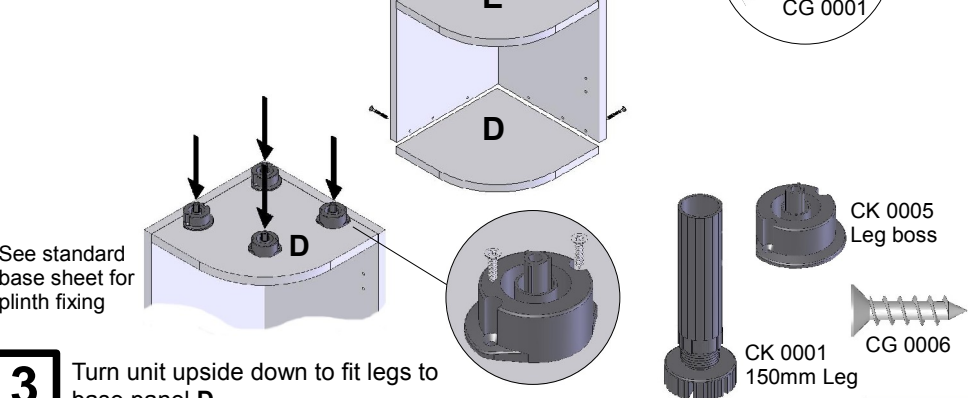
- 4** Turn unit over and fit legs. Turn unit upright and fit door to unit by screw fixing hinge plates to end panels. Drill door for handle and fit contact fitting and contact door plate. Fit shelf pegs and drop shelf into place.

Curved end base unit 300 x 300mm

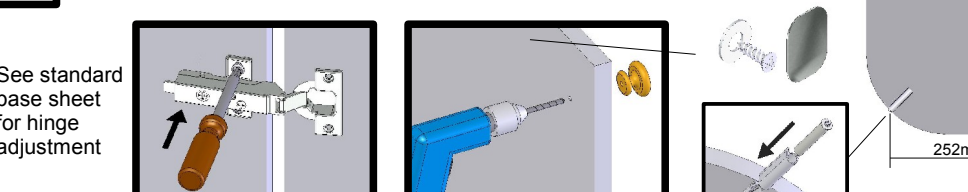
- 1** Screw fix back panels **A** and **B** using 6 x 45mm carcass screws.



- 2** Screw fix base, top and shelf panels **C**, **D** and **E** using 18 x 45mm carcass screws **J**.



- 3** Turn unit upside down to fit legs to base panel **D**.

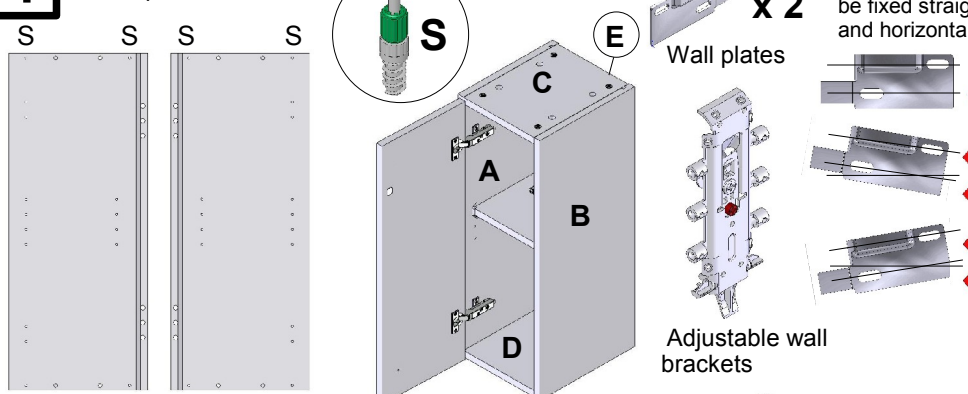


- 4** Fit doors to unit as required by screw fixing hinge plates to end panels. Drill door / doors for handles. Fit contact fitting below top panel as shown and fix contact plates to centre of door.

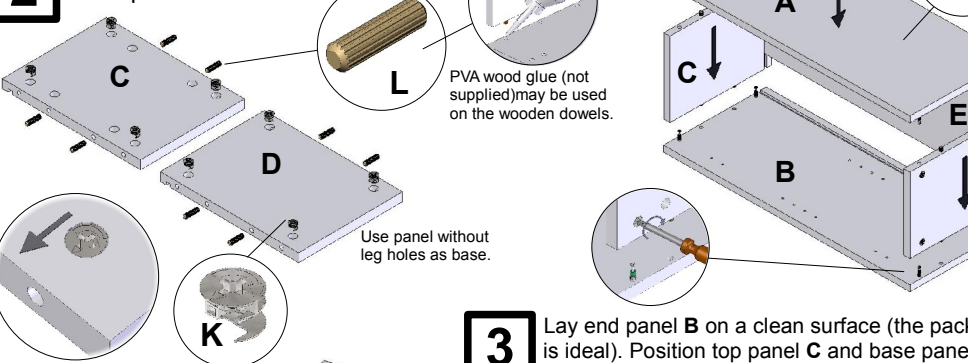
260 wide base used as wall unit

260 wide base units can also be used as wall units.

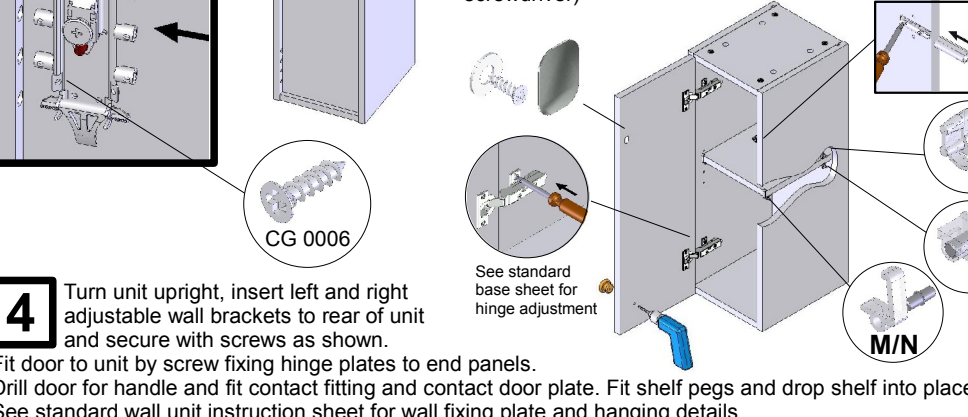
- 1** Fit the metal cam studs **S** to end panels **A** and **B**.



- 2** Insert cams and dowels into holes in base panels **C** and **D**.



- 3** Lay end panel **B** on a clean surface (the packaging is ideal). Position top panel **C** and base panel **D** so the metal cam studs and wooden dowels line up with the holes and all 15mm cams are to the outside of the unit. Slide back panel **E** into place in grooves. Position end panel **A** above all panels and use a rubber mallet to tap the panels completely together to avoid damage to the cams and panels. Turn the cams clockwise with a suitable screwdriver (do not use an electric screwdriver).



- 4** Turn unit upright, insert left and right adjustable wall brackets to rear of unit and secure with screws as shown. Fit door to unit by screw fixing hinge plates to end panels. Drill door for handle and fit contact fitting and contact door plate. Fit shelf pegs and drop shelf into place. See standard wall unit instruction sheet for wall fixing plate and hanging details.