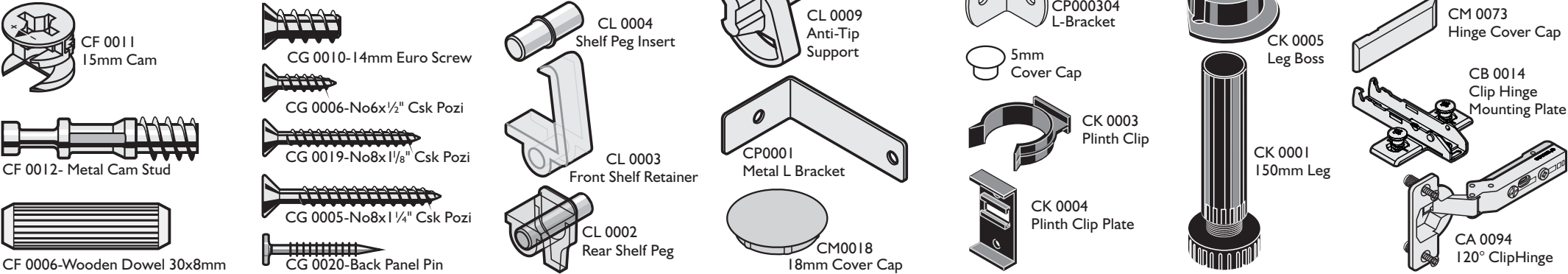


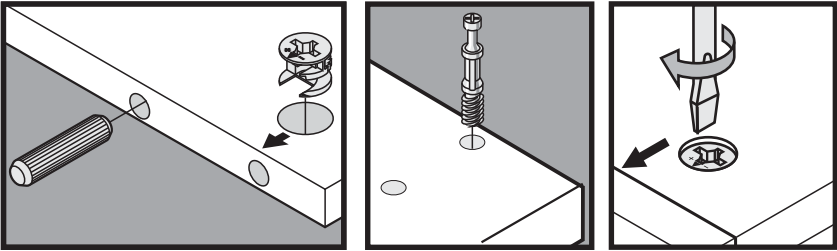
# 2117 TALL UNIT ASSEMBLY INSTRUCTIONS

## Fitting Identification List



## 15mm Cam & Metal Cam Stud

- Put the 15mm cams and wooden dowels into the panels and rails. The arrow on the cam must point to the edge of the panel.
- Fix the metal cam studs into the end panels in the holes indicated with a letter 'S'. Where the letter 'S' is grey, this is a fixed shelf position. Refer to the unit diagrams for the correct location for the unit being assembled.
- Lay the one end panel on a clean surface (the packaging is ideal).
- Position the first panel so the metal cam studs and wooden dowels line up with the holes and all 15mm cams are to the outside of the unit.
- PVA wood glue (not supplied) may be used on the wooden dowels.
- Push the panels firmly together until they meet completely.
- Turn the 15mm cams clockwise with a suitable screw driver (Do not use an electric screwdriver).



## Assembly- Larder

